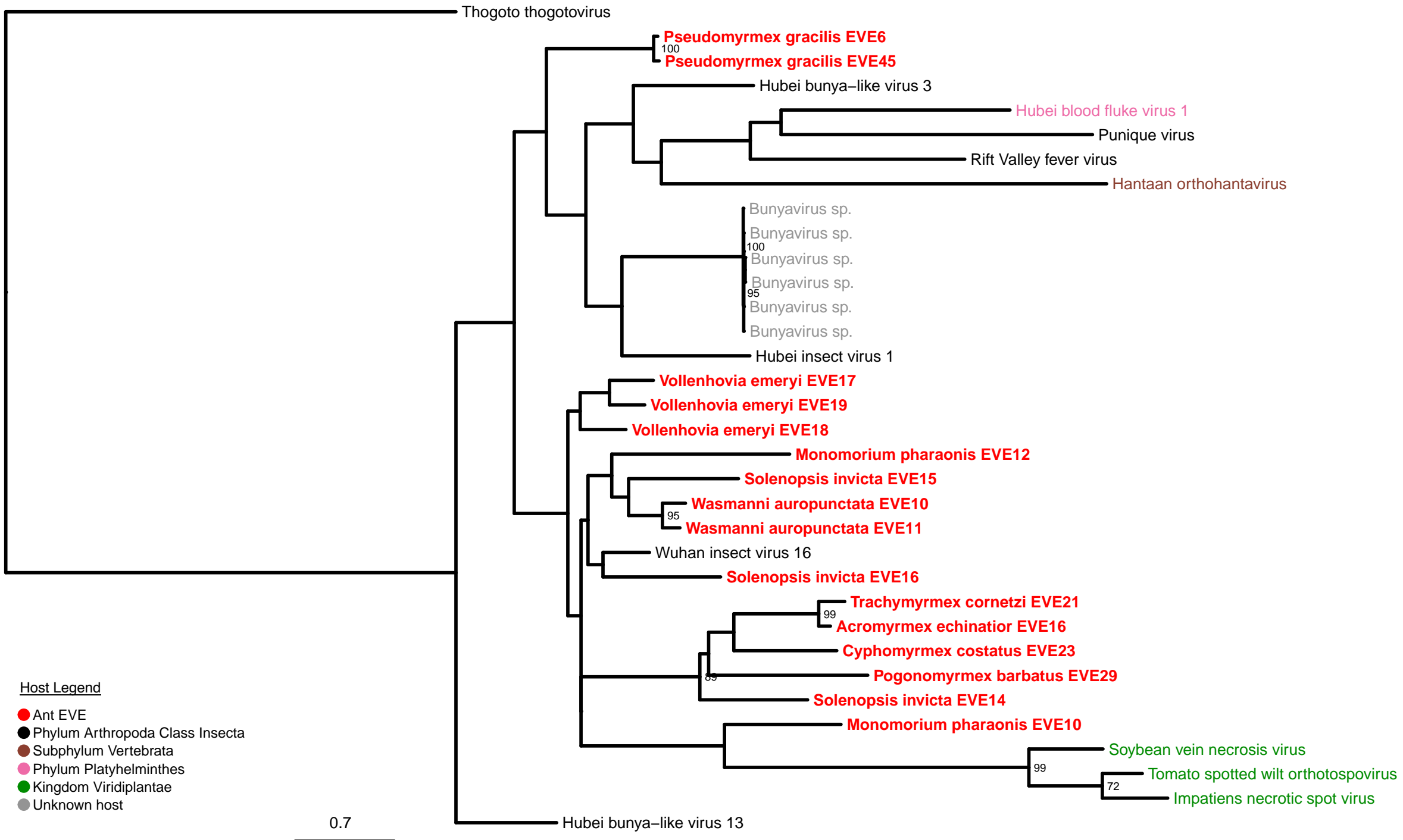
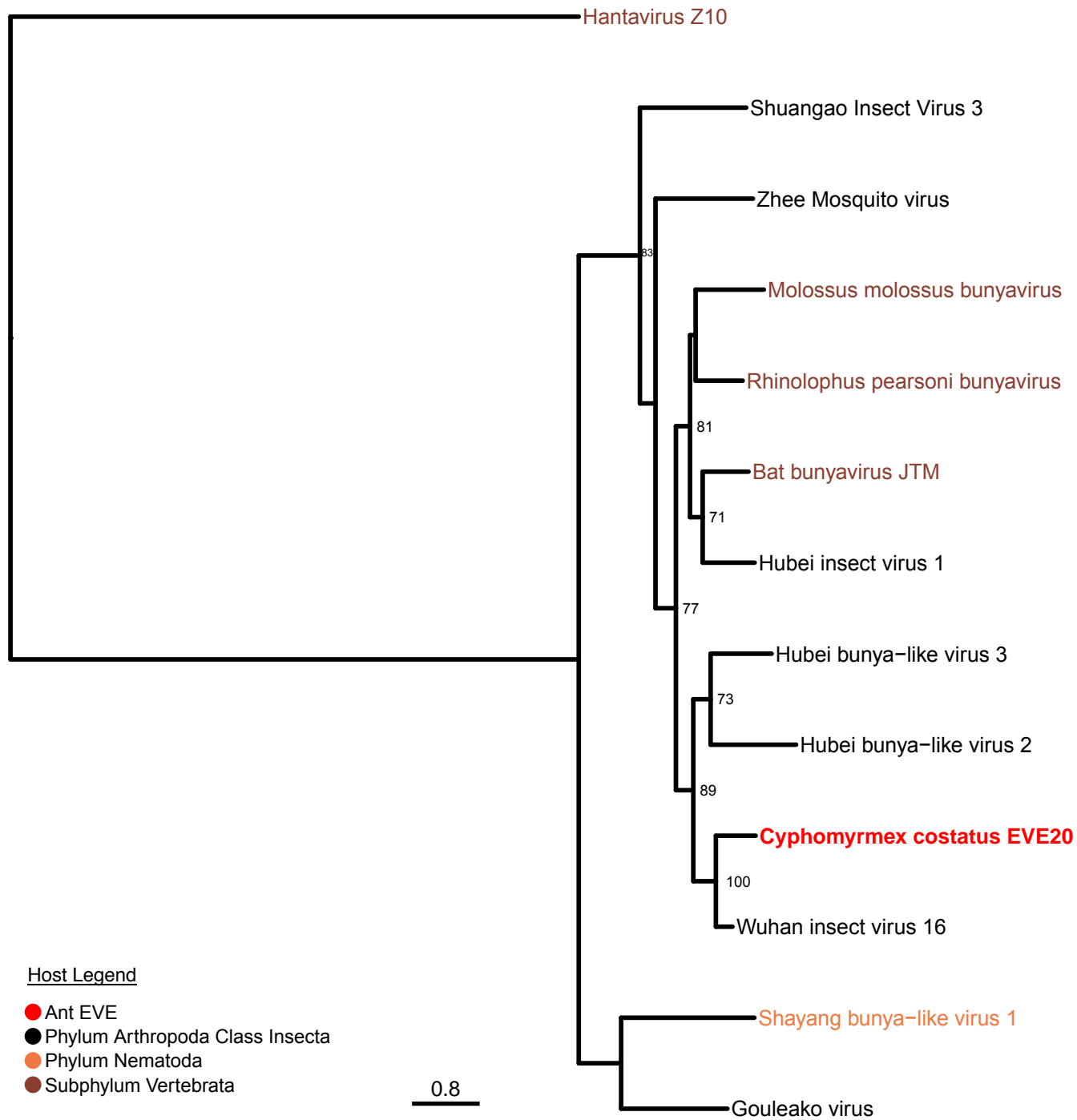


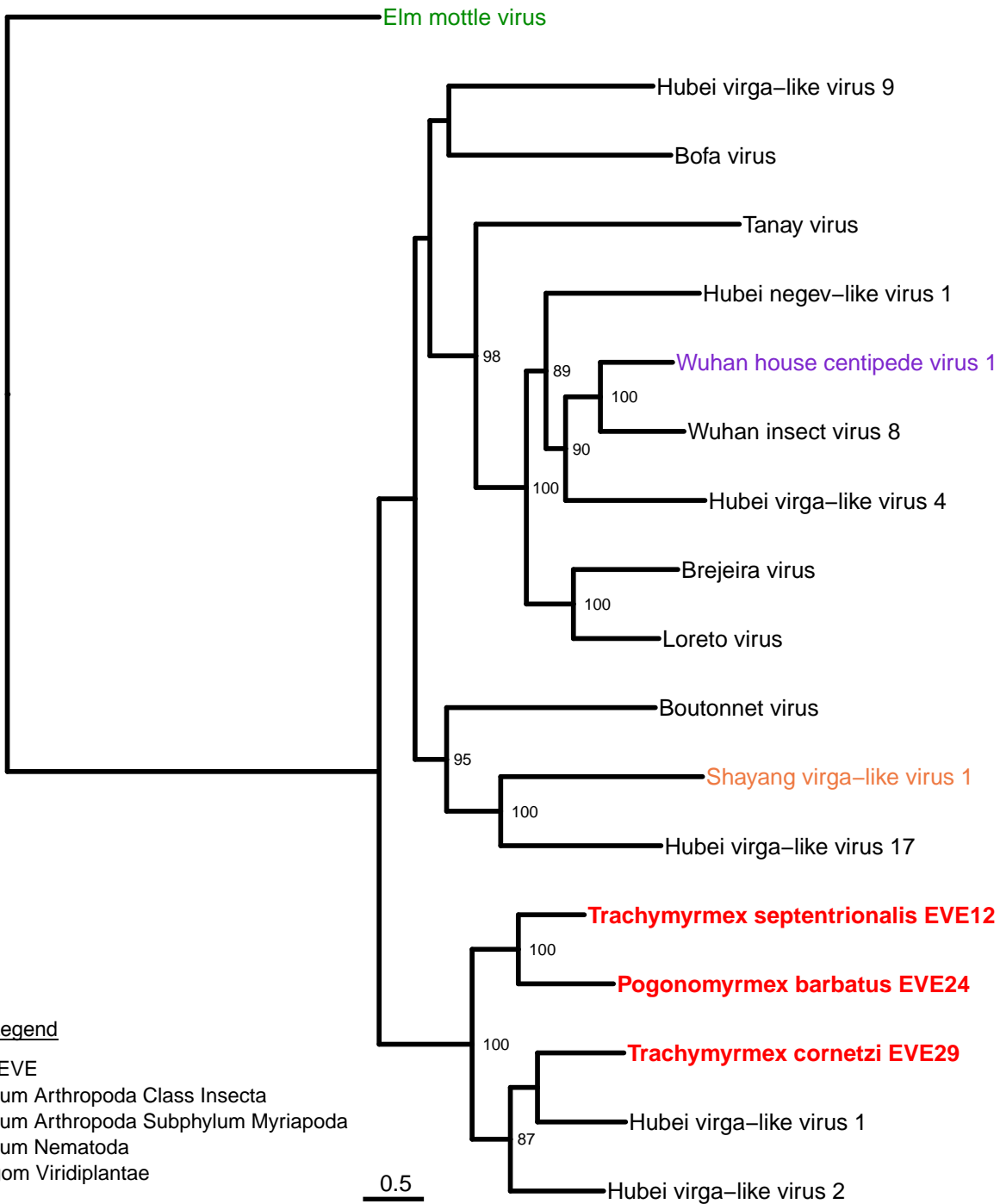
SF1: Bunya-Arena Nucleoprotein Phylogeny



SF2: Bunya-Arena RNA-dependent RNA polymerase Phylogeny



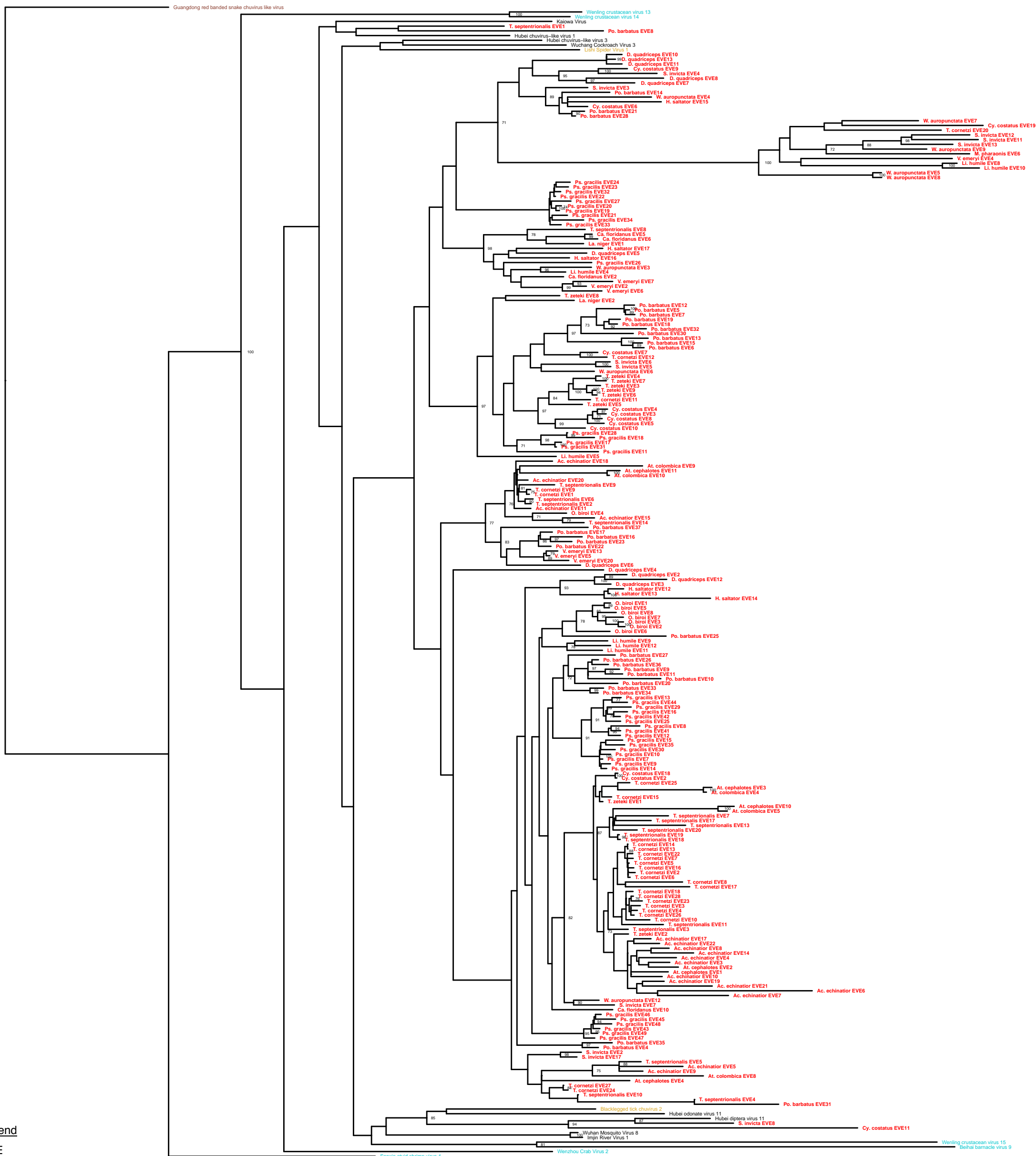
SF3:Hepe-Virga RNA-dependent RNA polymerase Phylogeny



Host Legend

- Ant EVE
- Phylum Arthropoda Class Insecta
- Phylum Arthropoda Subphylum Myriapoda
- Phylum Nematoda
- Kingdom Viridiplantae

SF4: Mono-Chu Glycoprotein Phylogeny



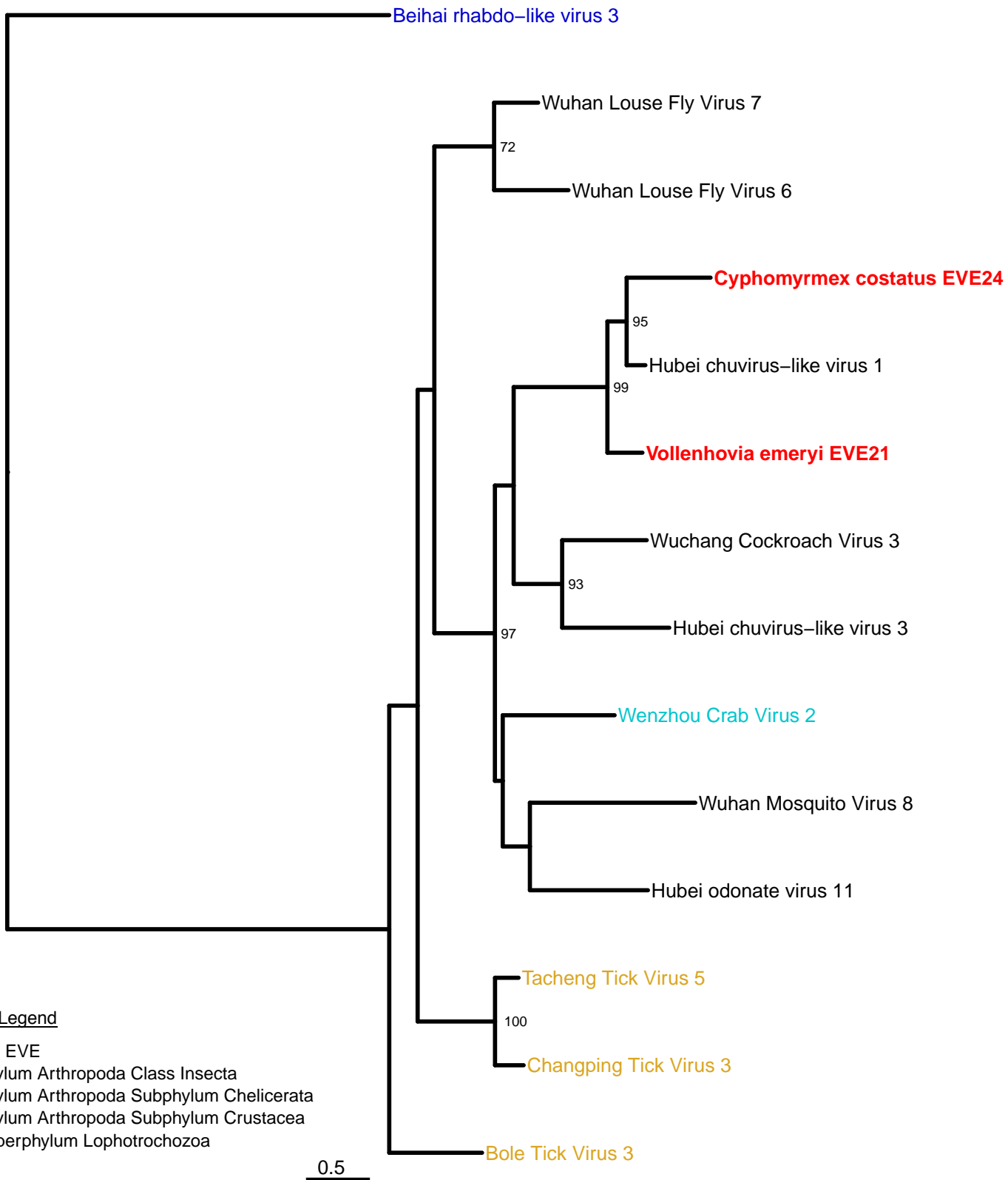
Host Legend

- Ant EVE
- Phylum Arthropoda Class Insecta
- Phylum Arthropoda Subphylum Crustacea
- Phylum Arthropoda Subphylum Chelicerata
- Subphylum Vertebrata

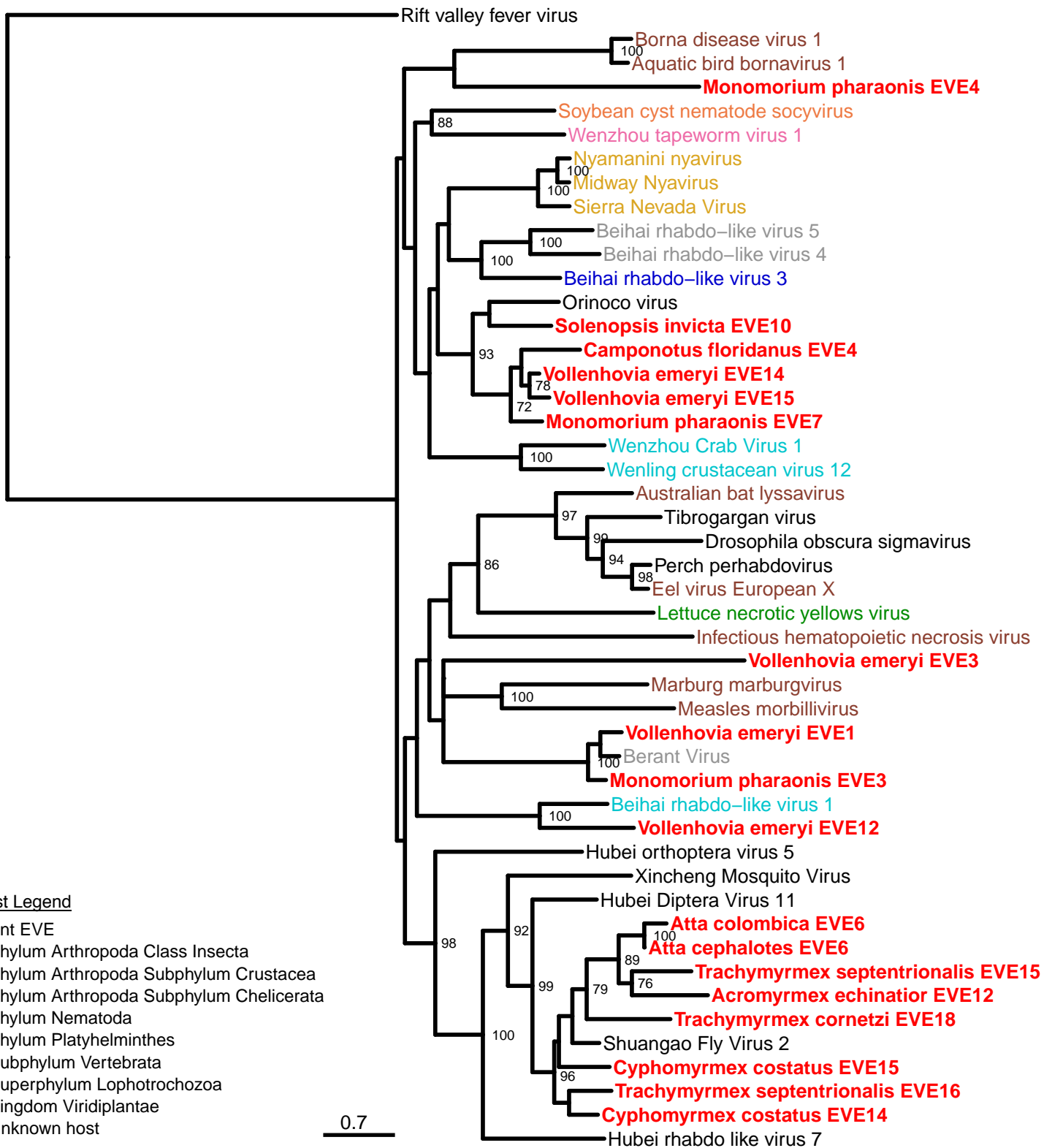
0.5

Guangdong red banded snake chuvirus like virus, Wenling crustacean virus 13, Wenling crustacean virus 14, Kalouwa Virus, T. septentrionalis EVE1, Hubei chuvirus-like virus 1, Hubei chuvirus-like virus 3, Wuchang Cockroach Virus 3, Lishui Spider Virus, D. quadriceps EVE10, D. quadriceps EVE13, D. quadriceps EVE11, Cy. costatus EVE3, S. invicta EVE4, D. quadriceps EVE8, S. invicta EVE3, Po. barbatus EVE14, W. auropunctata EVE4, H. saltator EVE15, Cy. costatus EVE6, Po. barbatus EVE21, Po. barbatus EVE29, W. auropunctata EVE7, Cy. costatus EVE19, T. cornetzi EVE20, S. invicta EVE12, S. invicta EVE11, S. invicta EVE13, W. auropunctata EVE9, M. pharaonis EVE6, V. emeryi EVE4, Li. humile EVE8, Li. humile EVE10, Ps. gracilis EVE24, Ps. gracilis EVE23, Ps. gracilis EVE32, Ps. gracilis EVE27, Ps. gracilis EVE20, Ps. gracilis EVE19, Ps. gracilis EVE21, Ps. gracilis EVE34, T. septentrionalis EVE8, Ca. floridanus EVE5, Ca. floridanus EVE6, La. niger EVE1, H. saltator EVE17, D. quadriceps EVE5, H. saltator EVE16, Ps. gracilis EVE26, W. auropunctata EVE3, Li. humile EVE4, Ca. floridanus EVE2, V. emeryi EVE7, V. emeryi EVE2, V. emeryi EVE6, T. zeteki EVE8, La. niger EVE2, Po. barbatus EVE12, Po. barbatus EVE5, Po. barbatus EVE7, Po. barbatus EVE19, Po. barbatus EVE18, Po. barbatus EVE32, Po. barbatus EVE30, Po. barbatus EVE13, Po. barbatus EVE15, Po. barbatus EVE6, Cy. costatus EVE7, T. cornetzi EVE12, S. invicta EVE6, S. invicta EVE5, W. auropunctata EVE6, T. zeteki EVE4, T. zeteki EVE7, T. zeteki EVE3, T. zeteki EVE6, T. cornetzi EVE11, T. zeteki EVE5, Cy. costatus EVE4, Cy. costatus EVE3, Cy. costatus EVE8, Cy. costatus EVE5, Cy. costatus EVE10, Ps. gracilis EVE28, Ps. gracilis EVE18, Ps. gracilis EVE17, Ps. gracilis EVE3, Ps. gracilis EVE11, Li. humile EVE5, Ac. echinator EVE18, Ac. echinator EVE9, At. cephalotes EVE11, At. colombica EVE10, Ac. echinator EVE20, T. septentrionalis EVE9, T. cornetzi EVE9, T. cornetzi EVE1, T. septentrionalis EVE6, T. septentrionalis EVE2, Ac. echinator EVE11, O. biroi EVE4, Ac. echinator EVE15, T. septentrionalis EVE14, Po. barbatus EVE37, Po. barbatus EVE17, Po. barbatus EVE16, Po. barbatus EVE23, Po. barbatus EVE22, V. emeryi EVE13, V. emeryi EVE5, V. emeryi EVE20, D. quadriceps EVE6, D. quadriceps EVE4, D. quadriceps EVE2, D. quadriceps EVE3, H. saltator EVE12, H. saltator EVE13, O. biroi EVE1, O. biroi EVE5, O. biroi EVE8, O. biroi EVE7, O. biroi EVE3, O. biroi EVE2, O. biroi EVE6, Li. humile EVE9, Li. humile EVE12, Li. humile EVE11, Po. barbatus EVE27, Po. barbatus EVE26, Po. barbatus EVE36, Po. barbatus EVE9, Po. barbatus EVE11, Po. barbatus EVE10, Po. barbatus EVE20, Po. barbatus EVE33, Po. barbatus EVE34, Ps. gracilis EVE13, Ps. gracilis EVE44, Ps. gracilis EVE29, Ps. gracilis EVE16, Ps. gracilis EVE42, Ps. gracilis EVE23, Ps. gracilis EVE8, Ps. gracilis EVE41, Ps. gracilis EVE12, Ps. gracilis EVE15, Ps. gracilis EVE35, Ps. gracilis EVE10, Ps. gracilis EVE1, Ps. gracilis EVE9, Ps. gracilis EVE14, Cy. costatus EVE18, Cy. costatus EVE2, T. cornetzi EVE25, At. cephalotes EVE3, At. colombica EVE4, T. cornetzi EVE15, T. cornetzi EVE1, At. cephalotes EVE10, At. colombica EVE5, T. septentrionalis EVE7, T. septentrionalis EVE17, T. septentrionalis EVE13, T. septentrionalis EVE20, T. septentrionalis EVE19, T. septentrionalis EVE18, T. cornetzi EVE14, T. cornetzi EVE13, T. cornetzi EVE22, T. cornetzi EVE7, T. cornetzi EVE5, T. cornetzi EVE16, T. cornetzi EVE2, T. cornetzi EVE6, T. cornetzi EVE8, T. cornetzi EVE17, T. cornetzi EVE18, T. cornetzi EVE28, T. cornetzi EVE23, T. cornetzi EVE3, T. cornetzi EVE4, T. cornetzi EVE26, T. cornetzi EVE10, T. septentrionalis EVE11, T. septentrionalis EVE3, T. zeteki EVE2, Ac. echinator EVE17, Ac. echinator EVE22, Ac. echinator EVE8, Ac. echinator EVE14, Ac. echinator EVE4, Ac. echinator EVE2, At. cephalotes EVE1, Ac. echinator EVE10, Ac. echinator EVE19, Ac. echinator EVE21, Ac. echinator EVE7, W. auropunctata EVE12, S. invicta EVE7, Ca. floridanus EVE10, Ps. gracilis EVE46, Ps. gracilis EVE45, Ps. gracilis EVE48, Ps. gracilis EVE43, Ps. gracilis EVE49, Ps. gracilis EVE47, Po. barbatus EVE35, S. invicta EVE2, S. invicta EVE17, T. septentrionalis EVE5, Ac. echinator EVE5, Ac. echinator EVE9, At. cephalotes EVE4, At. colombica EVE8, T. cornetzi EVE27, T. cornetzi EVE24, T. septentrionalis EVE10, T. septentrionalis EVE4, Po. barbatus EVE31, Blacklegged tick chuvirus 2, Hubei odonate virus 11, Hubei diptera virus 11, S. invicta EVE8, Cy. costatus EVE11, Sanxia atyid shrimp virus 4, Wenzhou Crab Virus 2, Wuhan Mosquito Virus 8, Imjin River Virus 1, Wenling crustacean virus 15, Beihai barnacle virus 9

SF5:Mono-Chu Nucleoprotein Phylogeny



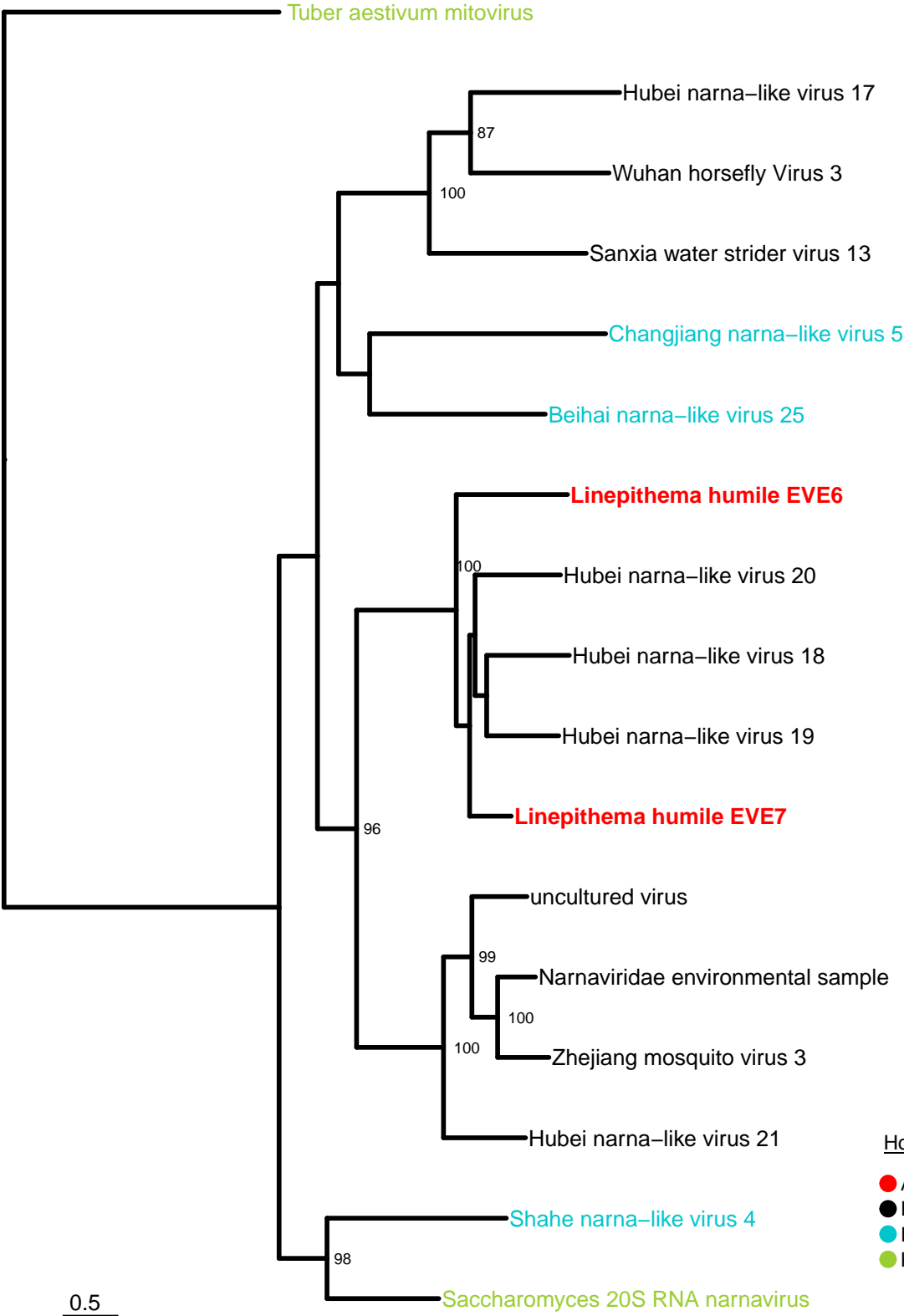
SF6: Mono-Chu RNA-dependent RNA polymerase Phylogeny



Host Legend

- Ant EVE
- Phylum Arthropoda Class Insecta
- Phylum Arthropoda Subphylum Crustacea
- Phylum Arthropoda Subphylum Chelicerata
- Phylum Nematoda
- Phylum Platyhelminthes
- Subphylum Vertebrata
- Superphylum Lophotrochozoa
- Kingdom Viridiplantae
- Unknown host

SF7: Narna-Levi RNA-dependent RNA polymerase Phylogeny

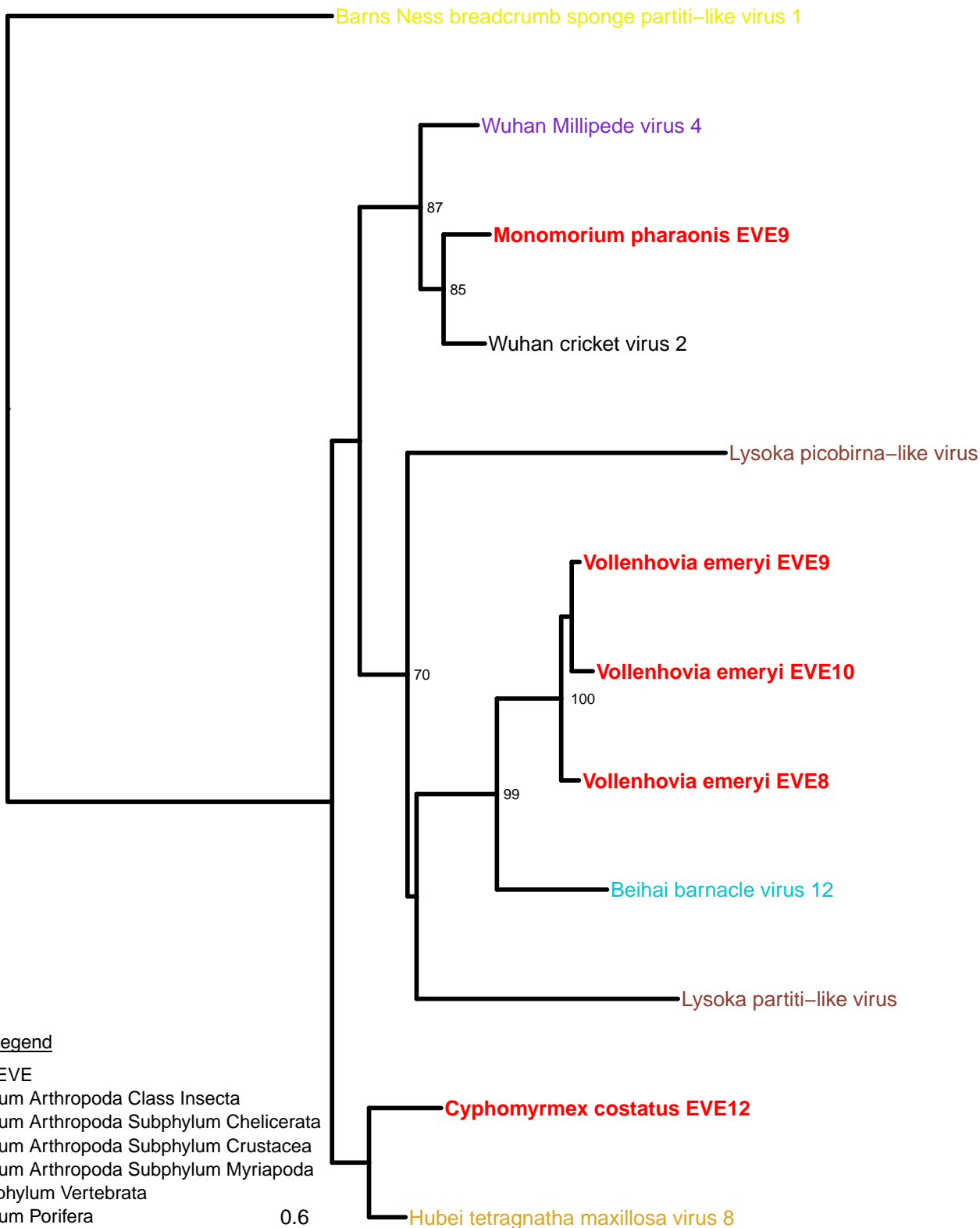


Host Legend

- Ant EVE
- Phylum Arthropoda Class Insecta
- Phylum Arthropoda Subphylum Crustacea
- Kingdom Fungi

0.5

SF8: Partiti-Picobirna Capsid Protein Phylogeny



Barns Ness breadcrumb sponge partiti-like virus 1

Wuhan Millipede virus 4

Monomorium pharaonis EVE9

Wuhan cricket virus 2

Lysoka picobirna-like virus

Vollenhovia emeryi EVE9

Vollenhovia emeryi EVE10

Vollenhovia emeryi EVE8

Beihai barnacle virus 12

Lysoka partiti-like virus

Cyphomyrmex costatus EVE12

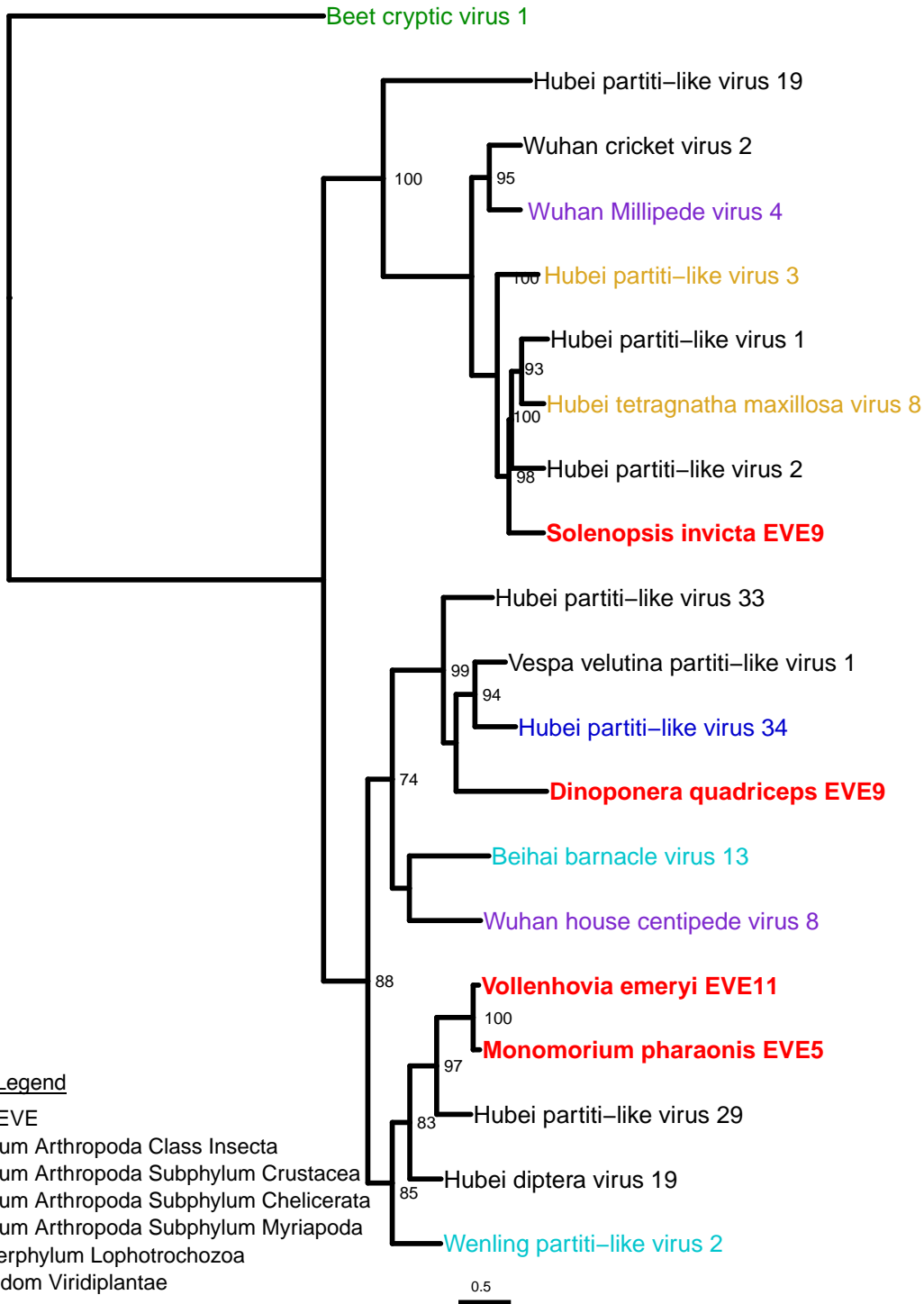
Hubei tetragnatha maxillosa virus 8

0.6

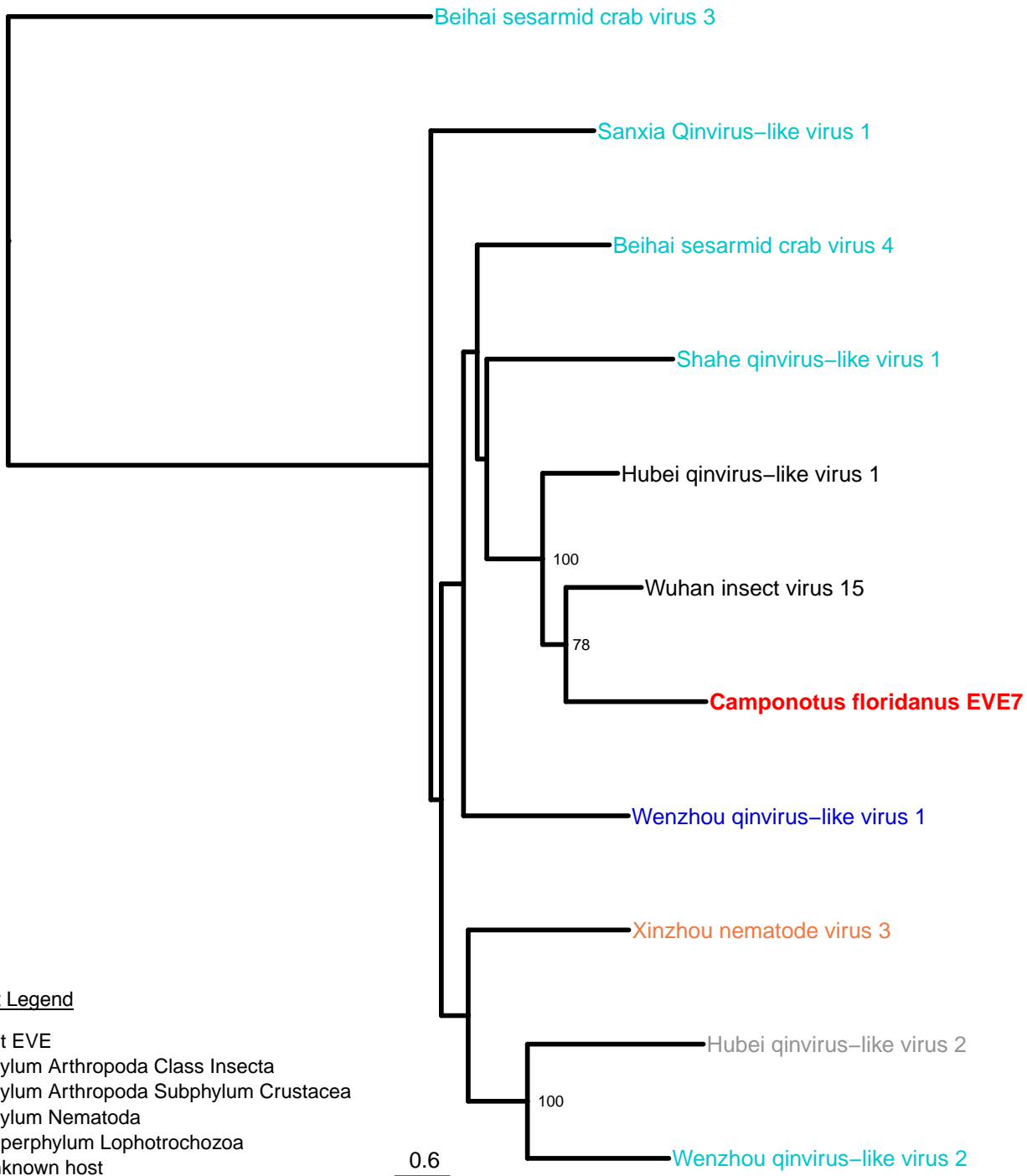
Host Legend

- Ant EVE
- Phylum Arthropoda Class Insecta
- Phylum Arthropoda Subphylum Chelicerata
- Phylum Arthropoda Subphylum Crustacea
- Phylum Arthropoda Subphylum Myriapoda
- Subphylum Vertebrata
- Phylum Porifera

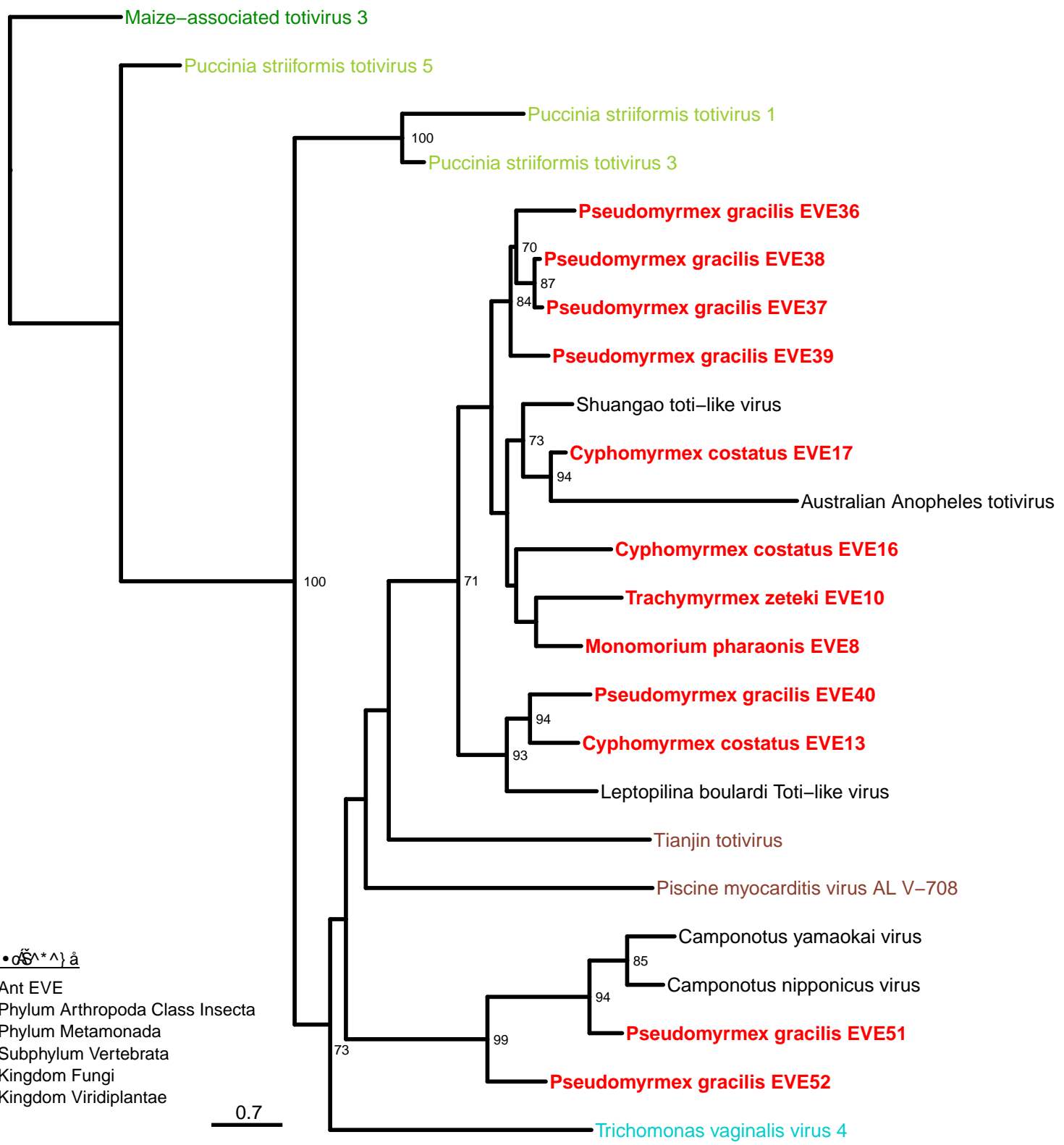
SF9: Partiti-Picobirna RNA-dependent RNA polymerase Phylogeny



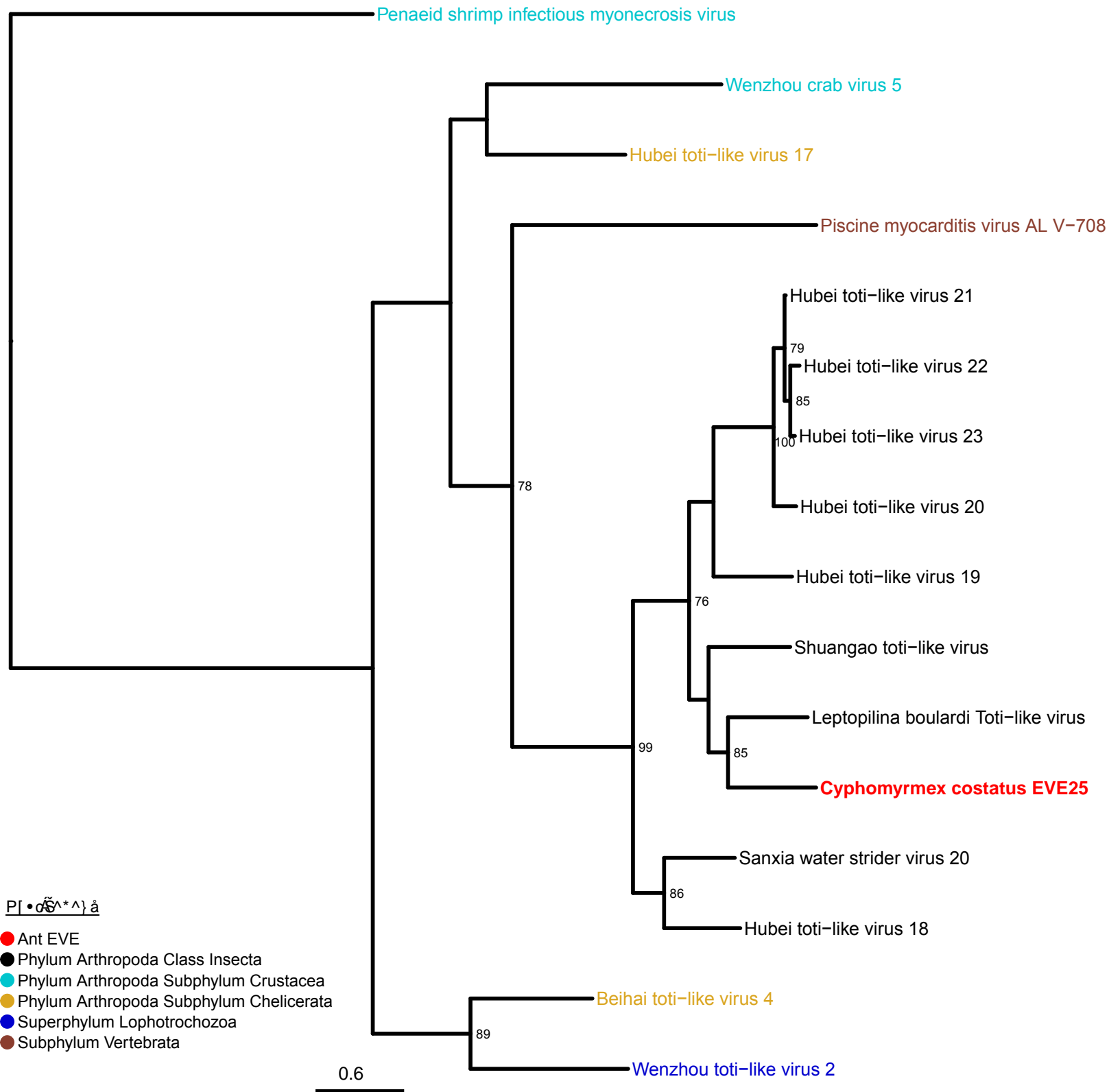
SF10: Qinvirus RNA-dependent RNA polymerase Phylogeny



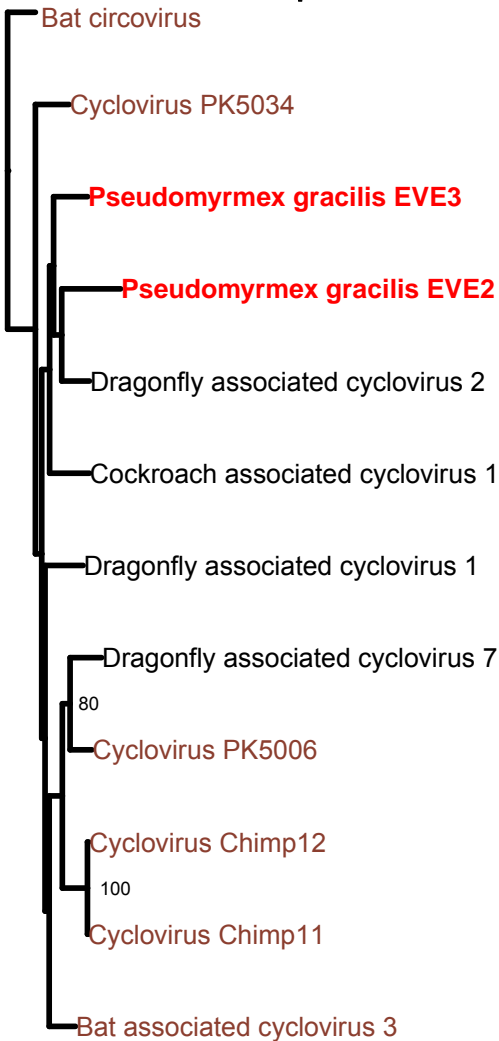
SF11: Toti-Chryso Coat Protein Phylogeny



SF12: Toti-Chryso RNA-dependent RNA polymerase Phylogeny

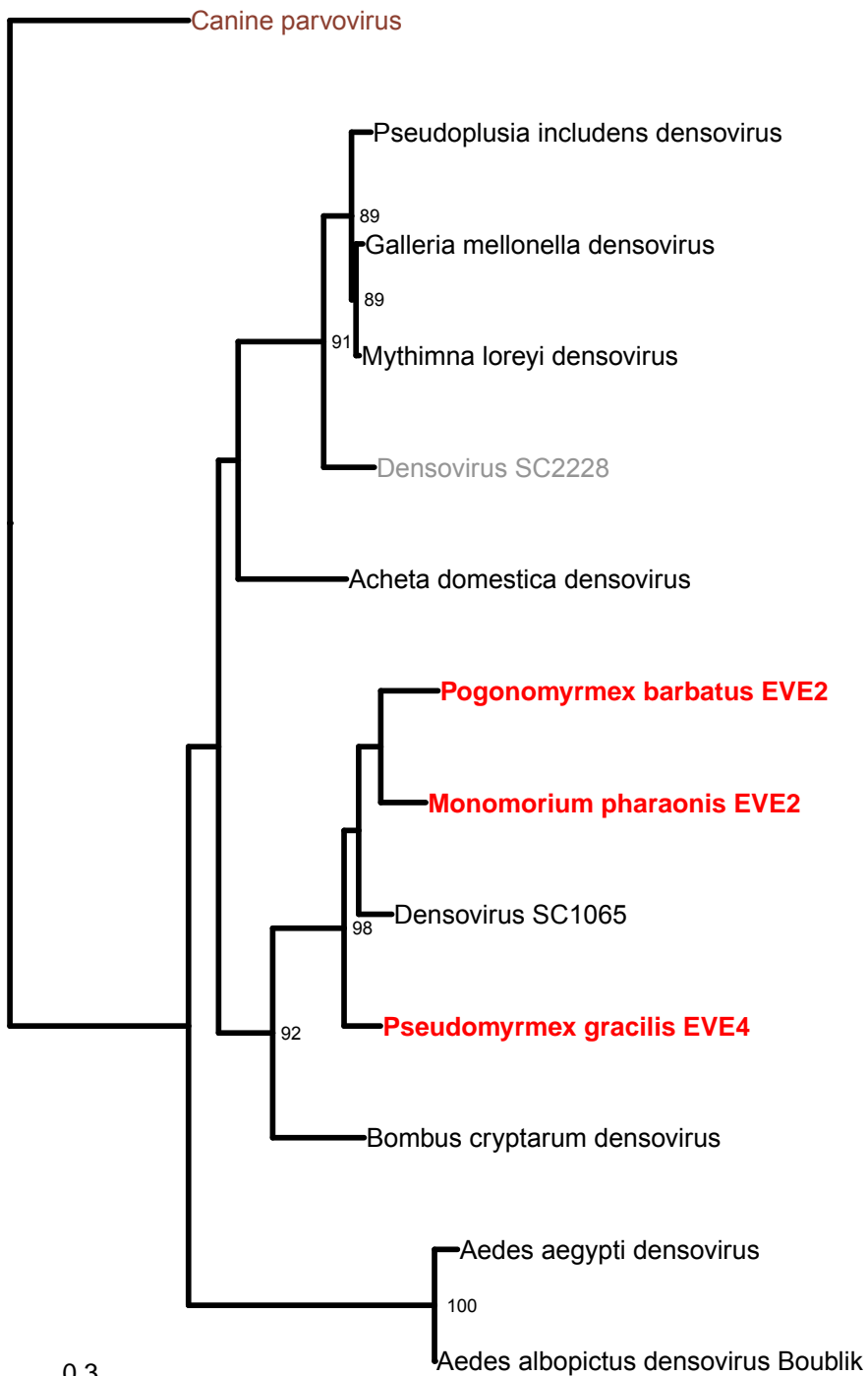


SF13: Circoviridae Replication-associated protein Phylogeny

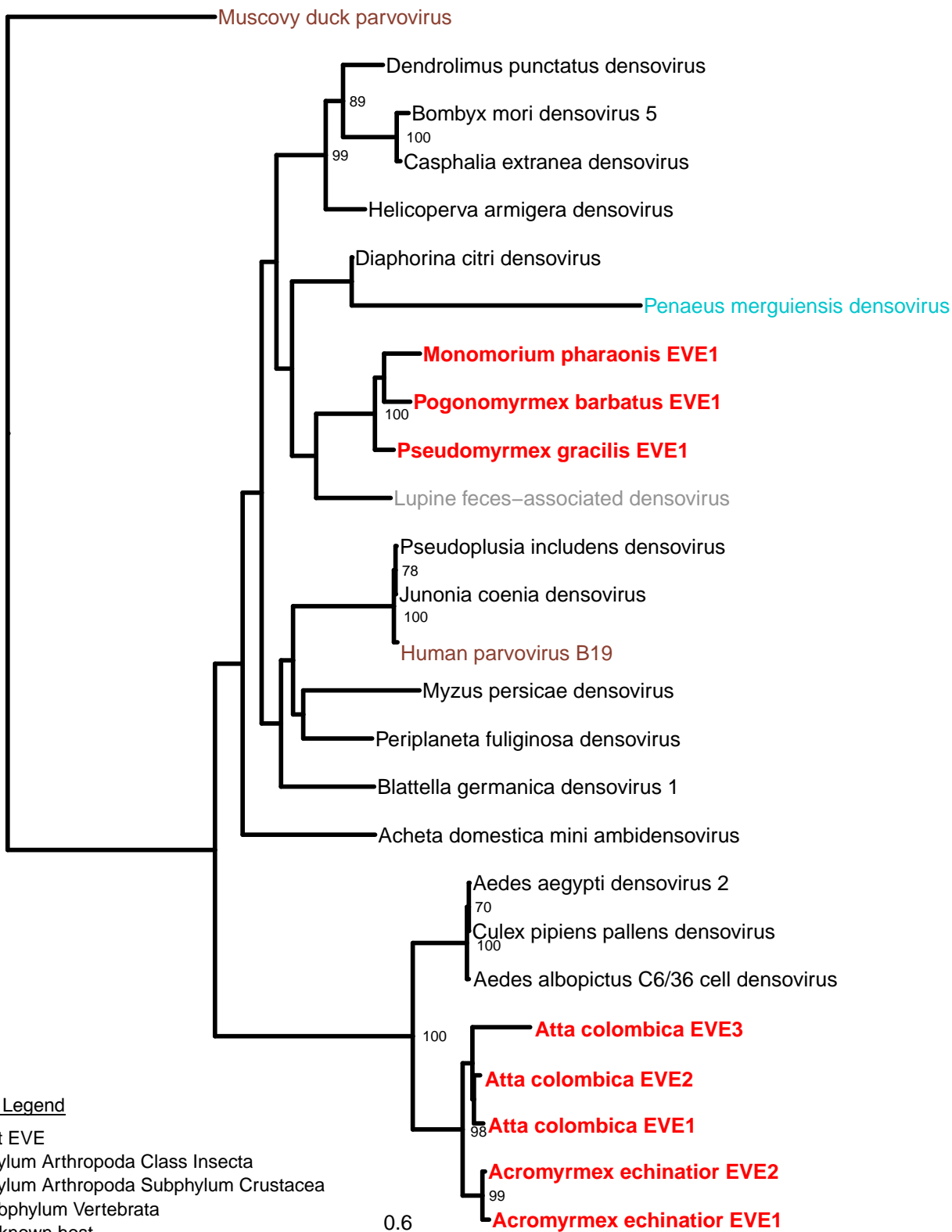


- Ant EVE
- Phylum Arthropoda Class Insecta
- Subphylum Vertebrata

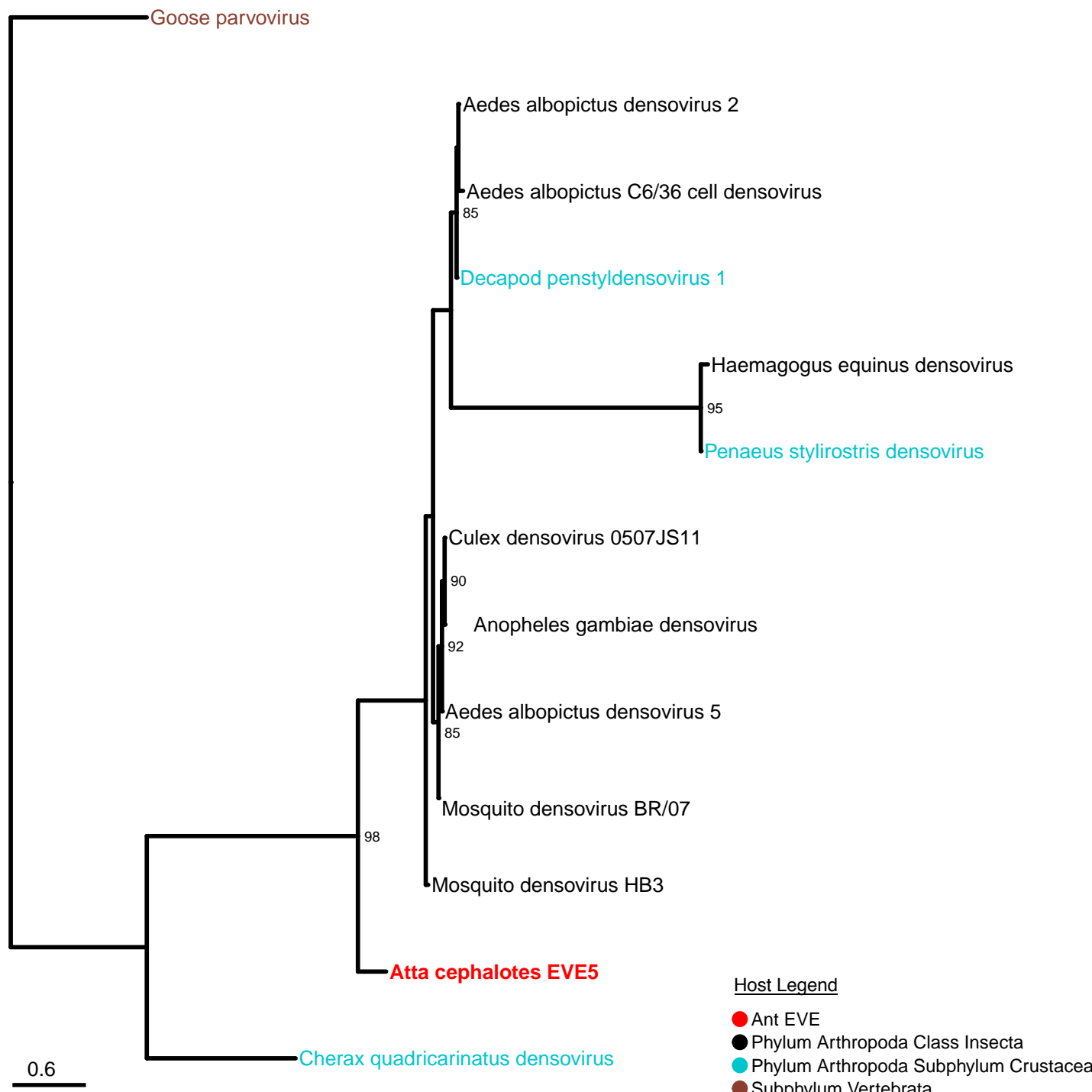
SF14:Parvoviridae VP1 Phylogeny



SF15: Parvoviridae Non-Structural Protein 1 Phylogeny



SF16: Parvoviridae Non-Structural Protein 2 Phylogeny



Goose parvovirus

Aedes albopictus densovirus 2

Aedes albopictus C6/36 cell densovirus

Decapod penstyldensovirus 1

Haemagogus equinus densovirus

Penaeus stylirostris densovirus

Culex densovirus 0507JS11

Anopheles gambiae densovirus

Aedes albopictus densovirus 5

Mosquito densovirus BR/07

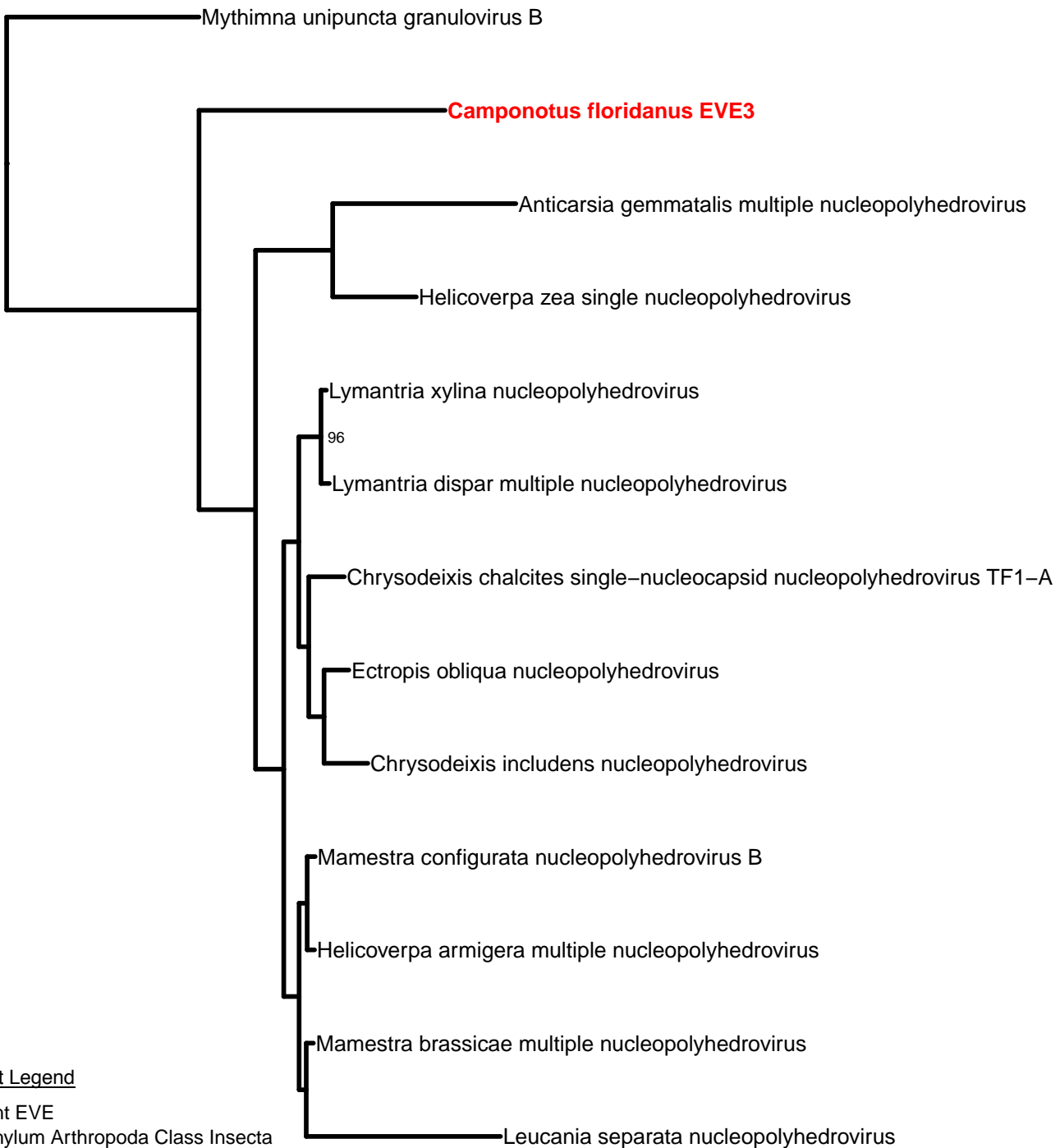
Mosquito densovirus HB3

Atta cephalotes EVE5

Cherax quadricarinatus densovirus

0.6

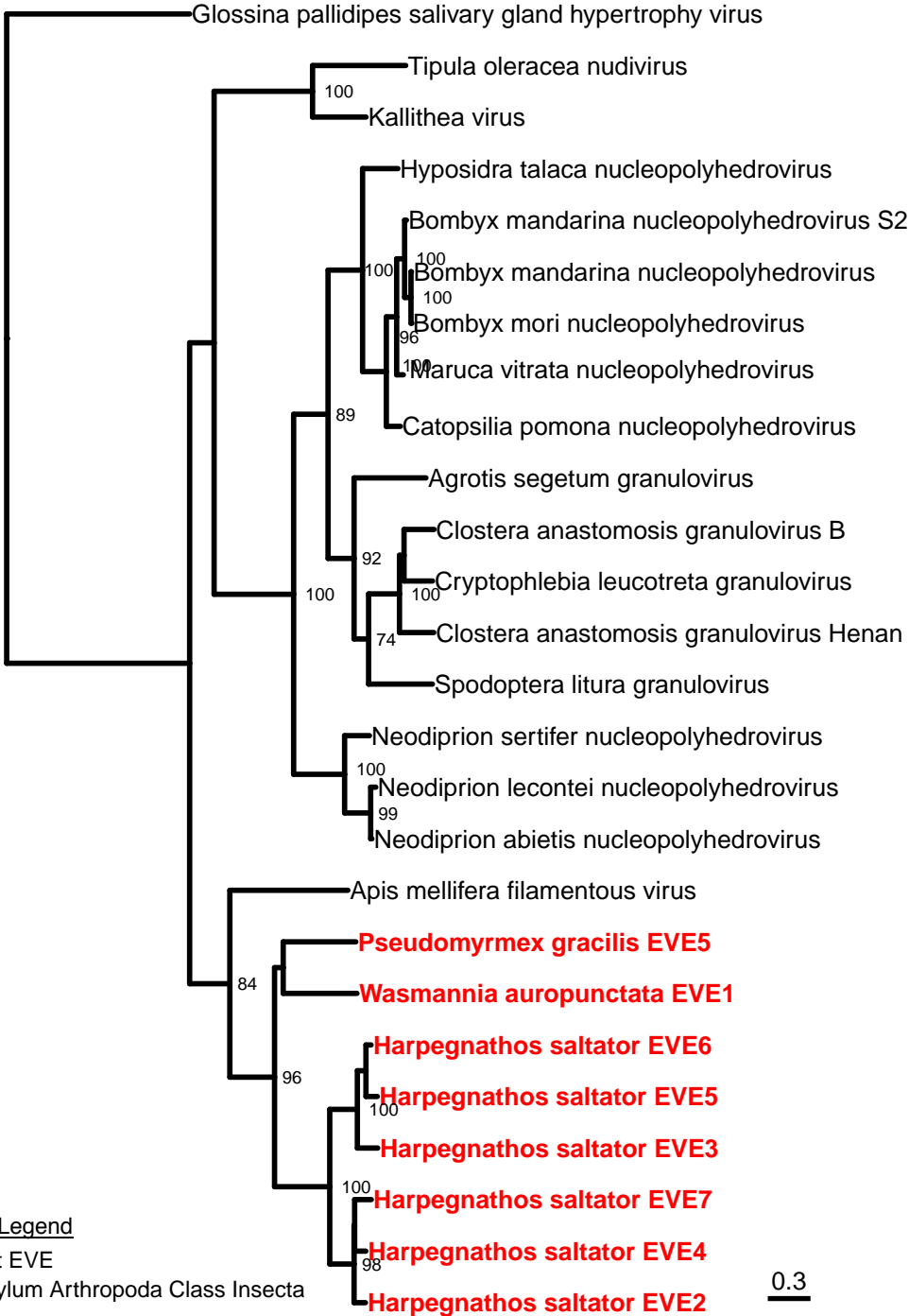
SF17: Baculoviridae Bro-a Phylogeny



Host Legend

- Ant EVE
- Phylum Arthropoda Class Insecta

SF18: Baculoviridae PIF-1 Phylogeny

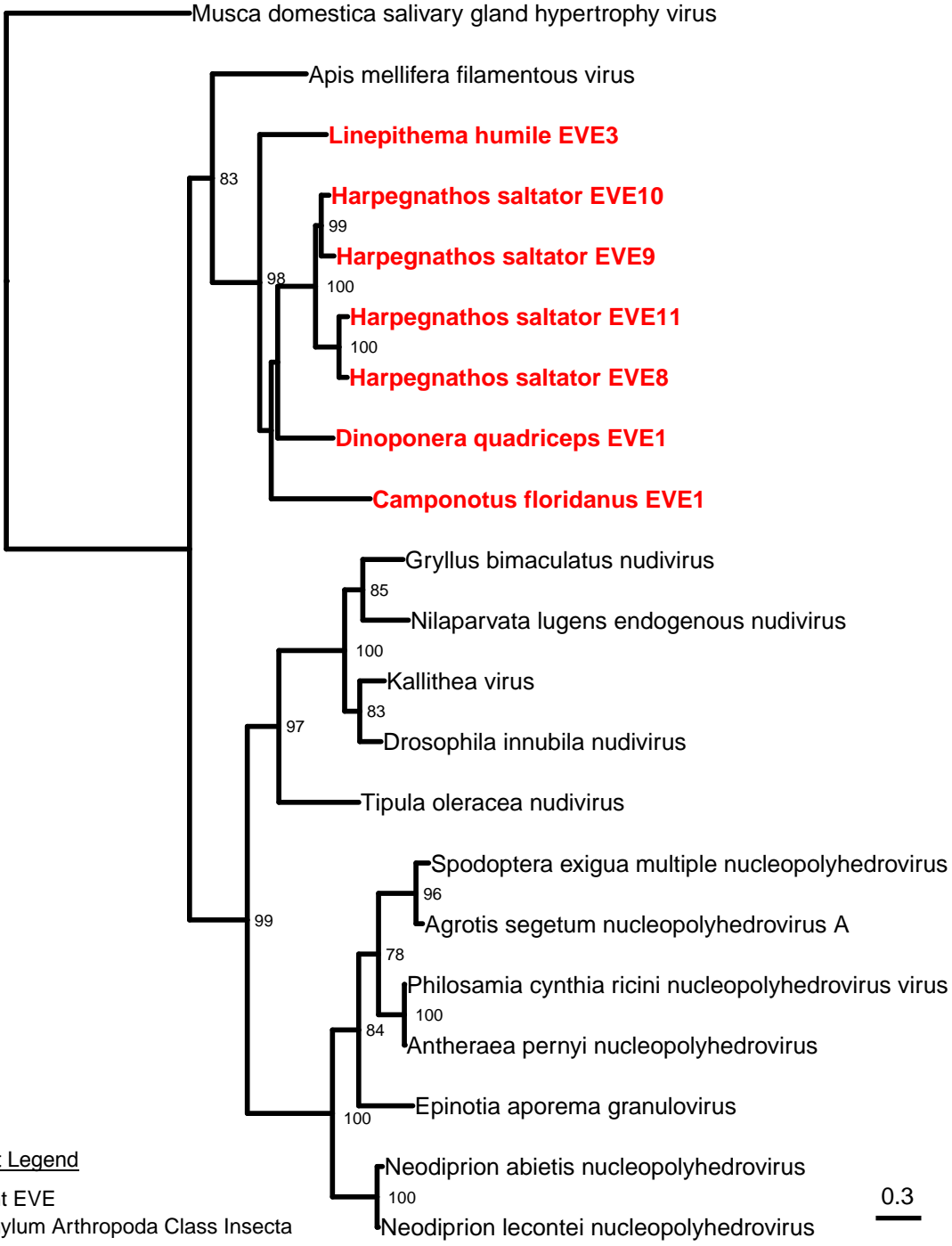


Host Legend

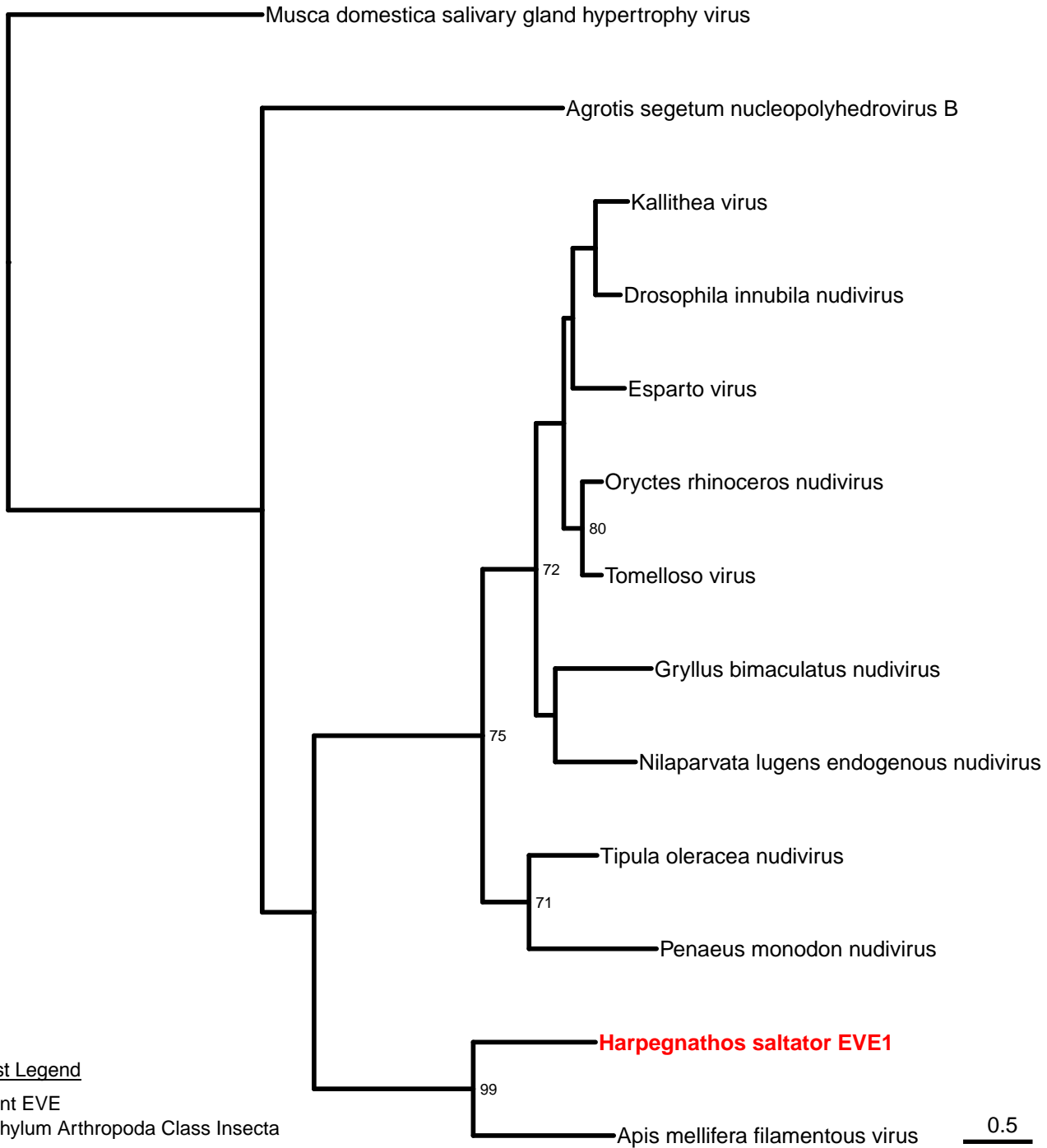
- Ant EVE
- Phylum Arthropoda Class Insecta

0.3

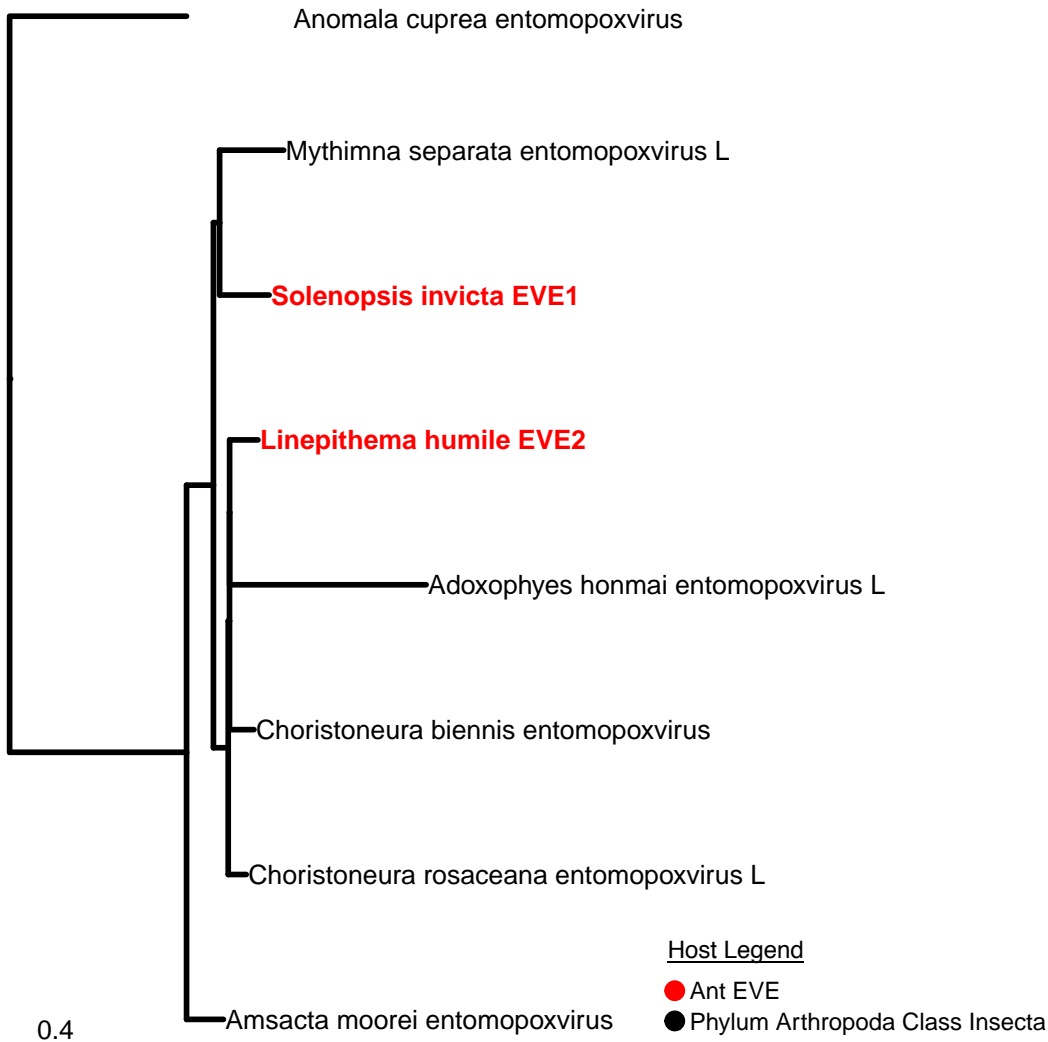
SF19: Baculoviridae PIF-2 Phylogeny



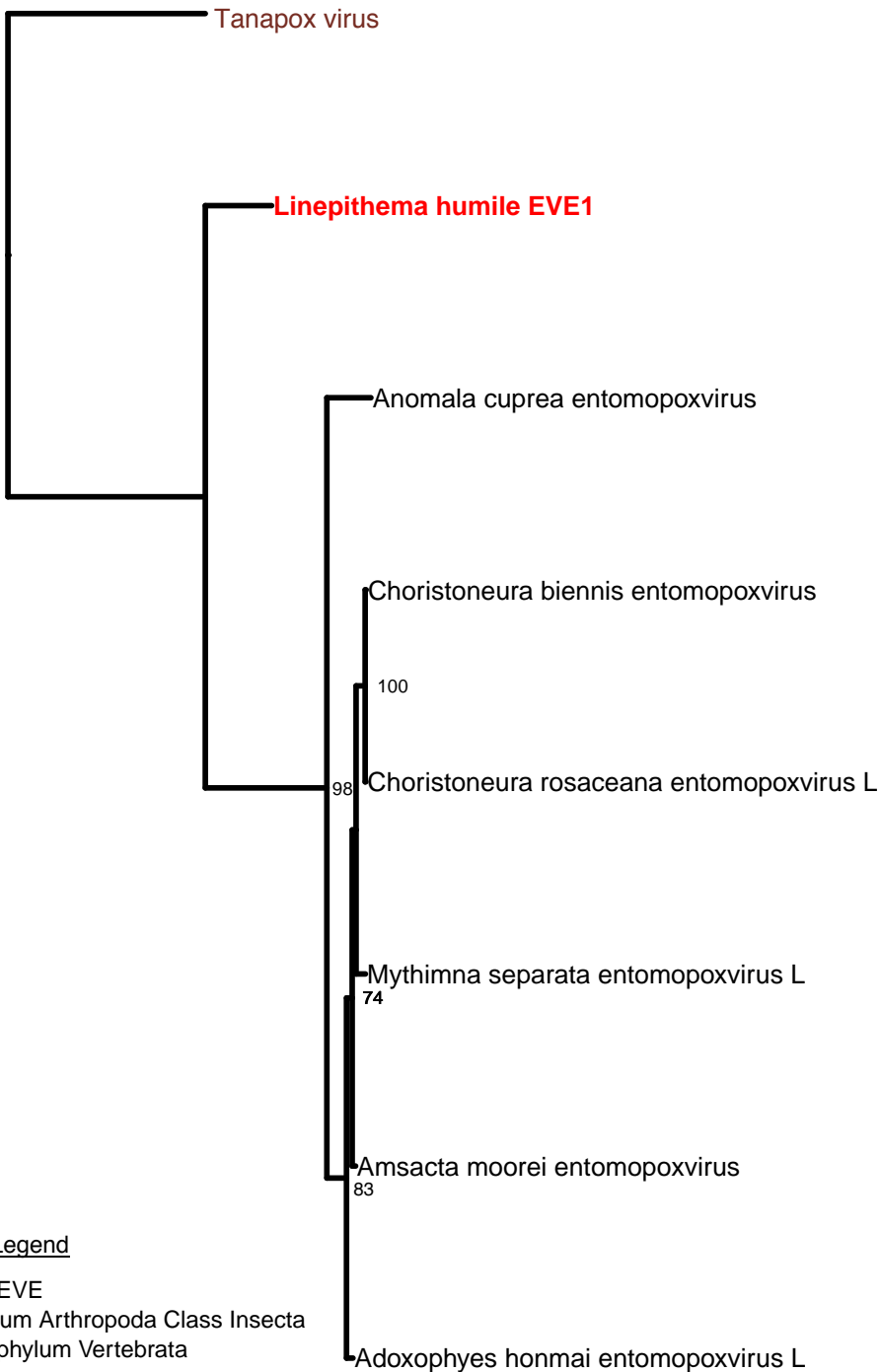
SF20: Baculoviridae PIF-3 Phylogeny



SF21: Entomopoxvirus Tryptophan protein Phylogeny



SF22: Entomopoxvirus RNA polymerase Phylogeny

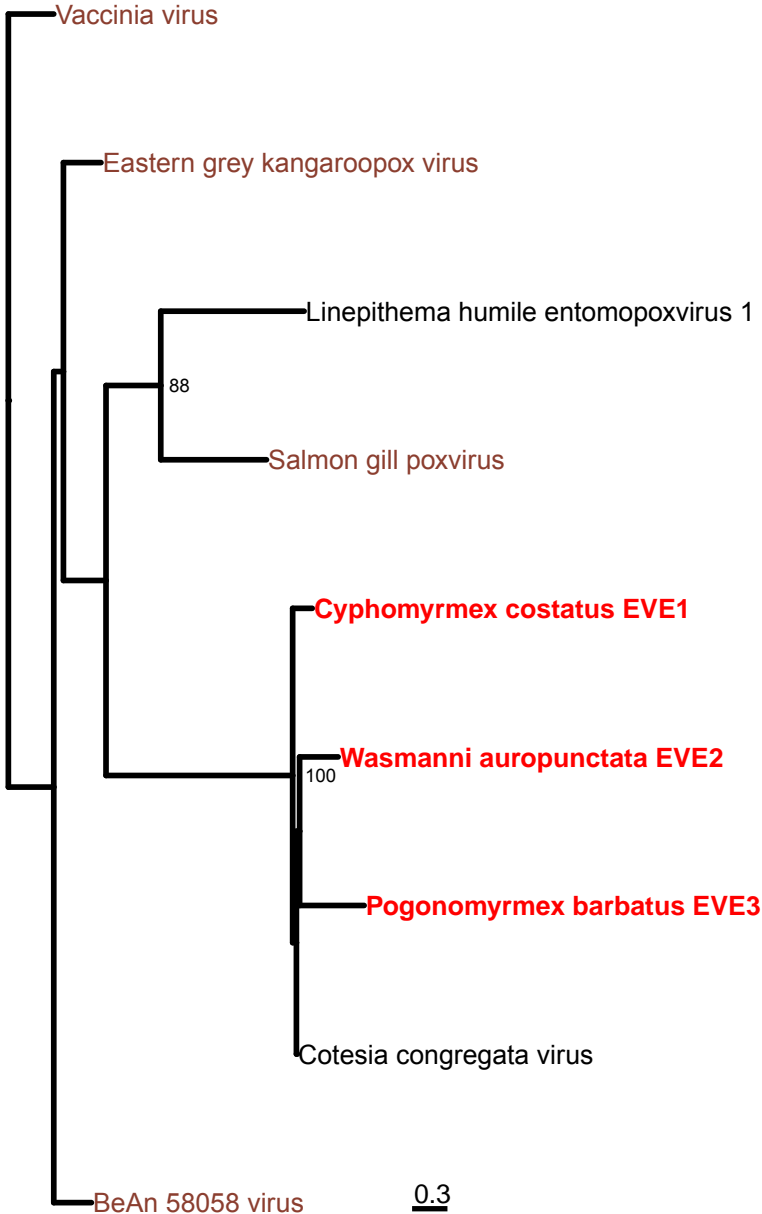


Host Legend

- Ant EVE
- Phylum Arthropoda Class Insecta
- Subphylum Vertebrata

0.3

SF23: Polydnaviridae PoxA32 protein Phylogeny



Phylogenetic tree

● Ant EVE

● Phylum Arthropoda Class Insecta

● Subphylum Vertebrata