



US 20190371892A1

(19) **United States**

(12) **Patent Application Publication**

LEE et al.

(10) **Pub. No.: US 2019/0371892 A1**

(43) **Pub. Date: Dec. 5, 2019**

(54) **SUPERLATTICE STRUCTURE INCLUDING TWO-DIMENSIONAL MATERIAL AND DEVICE INCLUDING THE SUPERLATTICE STRUCTURE**

Related U.S. Application Data

(60) Provisional application No. 62/679,085, filed on Jun. 1, 2018.

Publication Classification

(51) **Int. Cl.**
H01L 29/15 (2006.01)
H01L 29/10 (2006.01)
(52) **U.S. Cl.**
CPC *H01L 29/158* (2013.01); *H01L 29/1054* (2013.01)

(71) Applicants: **Samsung Electronics Co., Ltd.**, Suwon-si (KR); **THE UNIVERSITY OF CHICAGO**, Chicago, IL (US); **Center for Technology Licensing at Cornell University**, Ithaca, NY (US)

(72) Inventors: **Minhyun LEE**, Suwon-si (KR); **Jiwoong PARK**, Chicago, IL (US); **Saieun XIE**, Ithaca, NY (US); **Jinseong HEO**, Seoul (KR); **Hyeonjin SHIN**, Suwon-si (KR)

(73) Assignees: **Samsung Electronics Co., Ltd.**, Suwon-si (KR); **THE UNIVERSITY OF CHICAGO**, Chicago, IL (US); **Center for Technology Licensing at Cornell University**, Ithaca, NY (US)

(57) **ABSTRACT**

Provided are a superlattice structure including a two-dimensional material and a device including the superlattice structure. The superlattice structure may include at least two different two-dimensional (2D) materials bonded to each other in a lateral direction, and an interfacial region of the at least two 2D materials may be strained. The superlattice structure may have a bandgap adjusted by the interfacial region that is strained. The at least two 2D materials may include first and second 2D materials. The first 2D material may have a first bandgap in an intrinsic state thereof. The second 2D material may have a second bandgap in an intrinsic state thereof. An interfacial region of the first and second 2D materials and an adjacent region may have a third bandgap between the first bandgap and the second bandgap.

(21) Appl. No.: **16/428,006**

(22) Filed: **May 31, 2019**

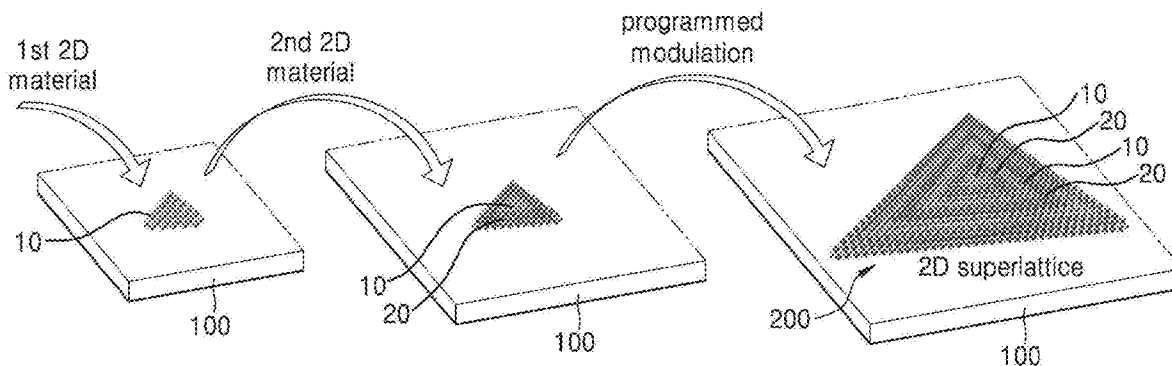


FIG. 1

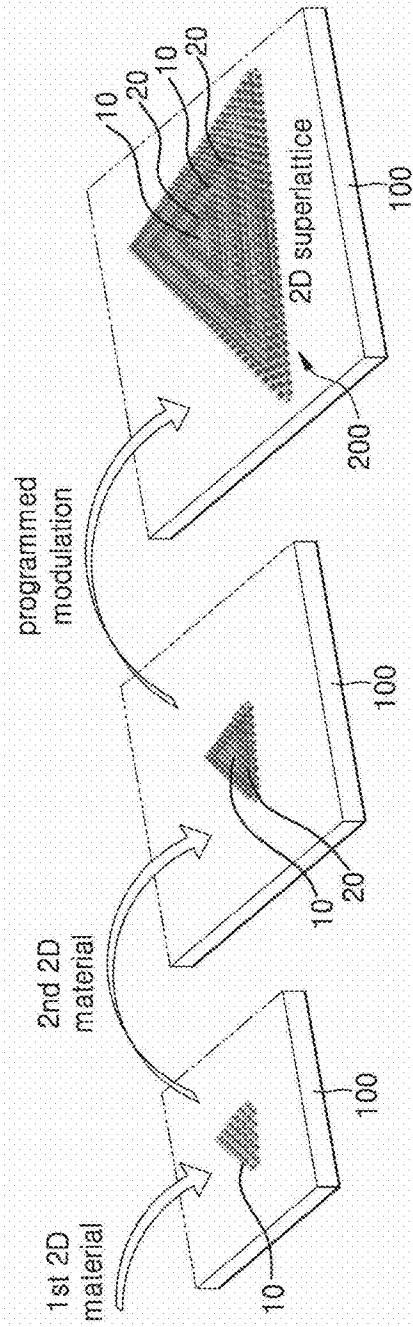


FIG. 2

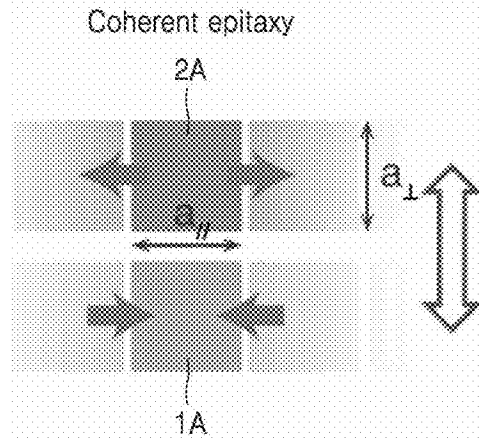


FIG. 3

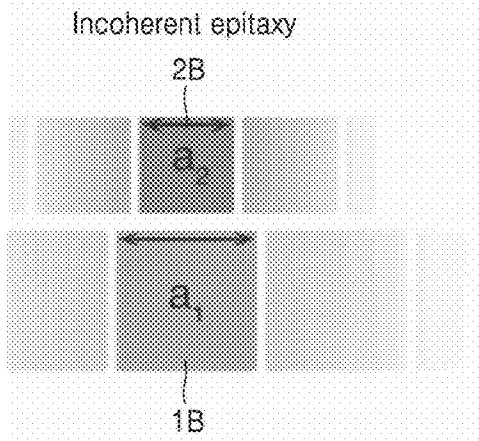


FIG. 4

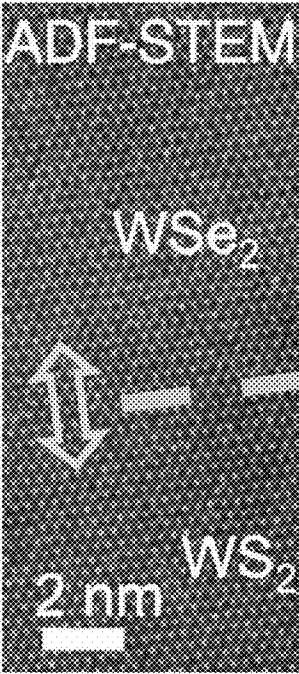


FIG. 5

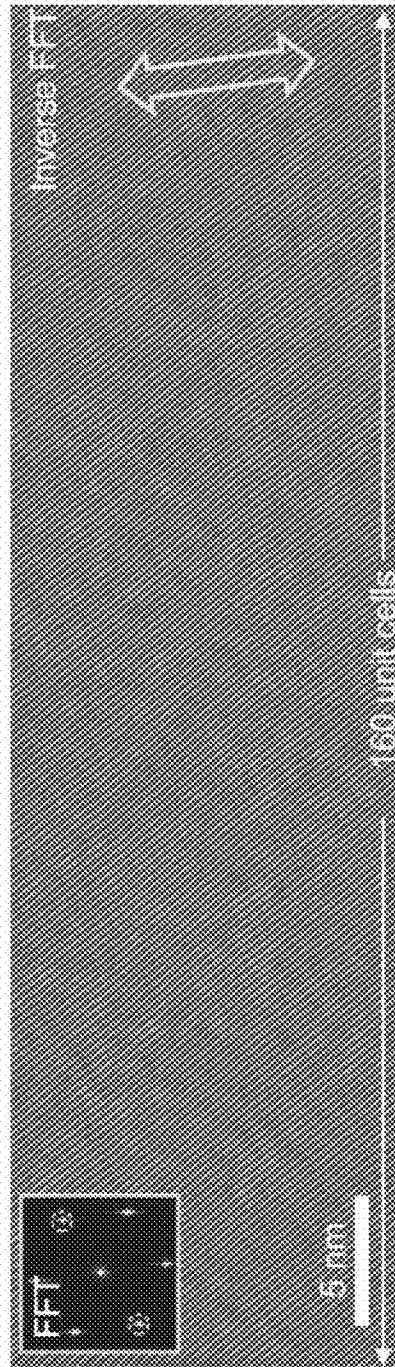


FIG. 6

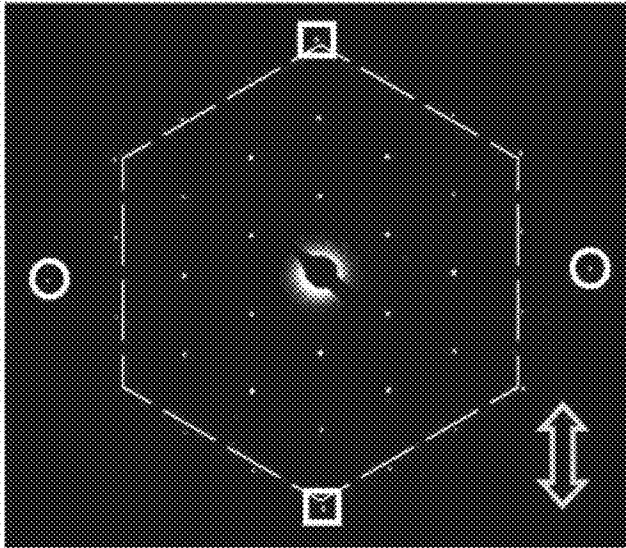


FIG. 7

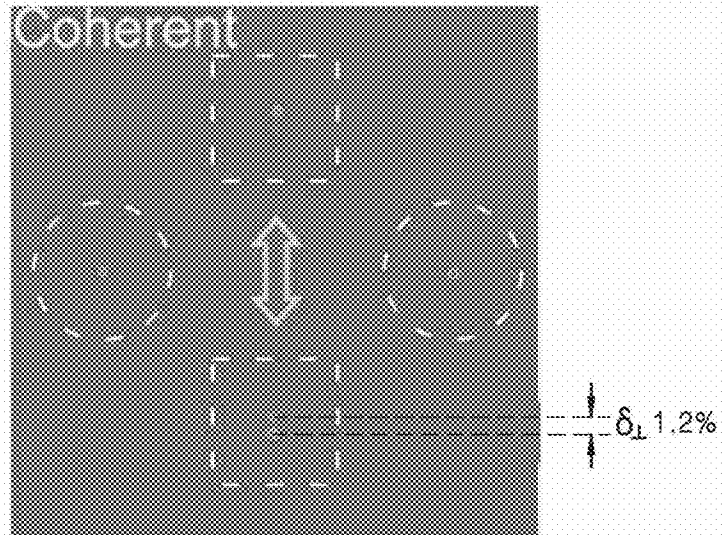


FIG. 8

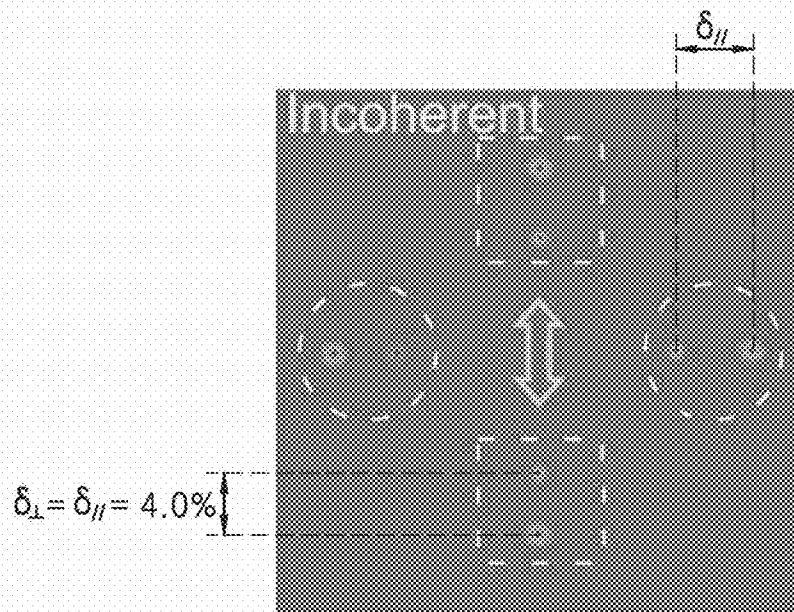


FIG. 9

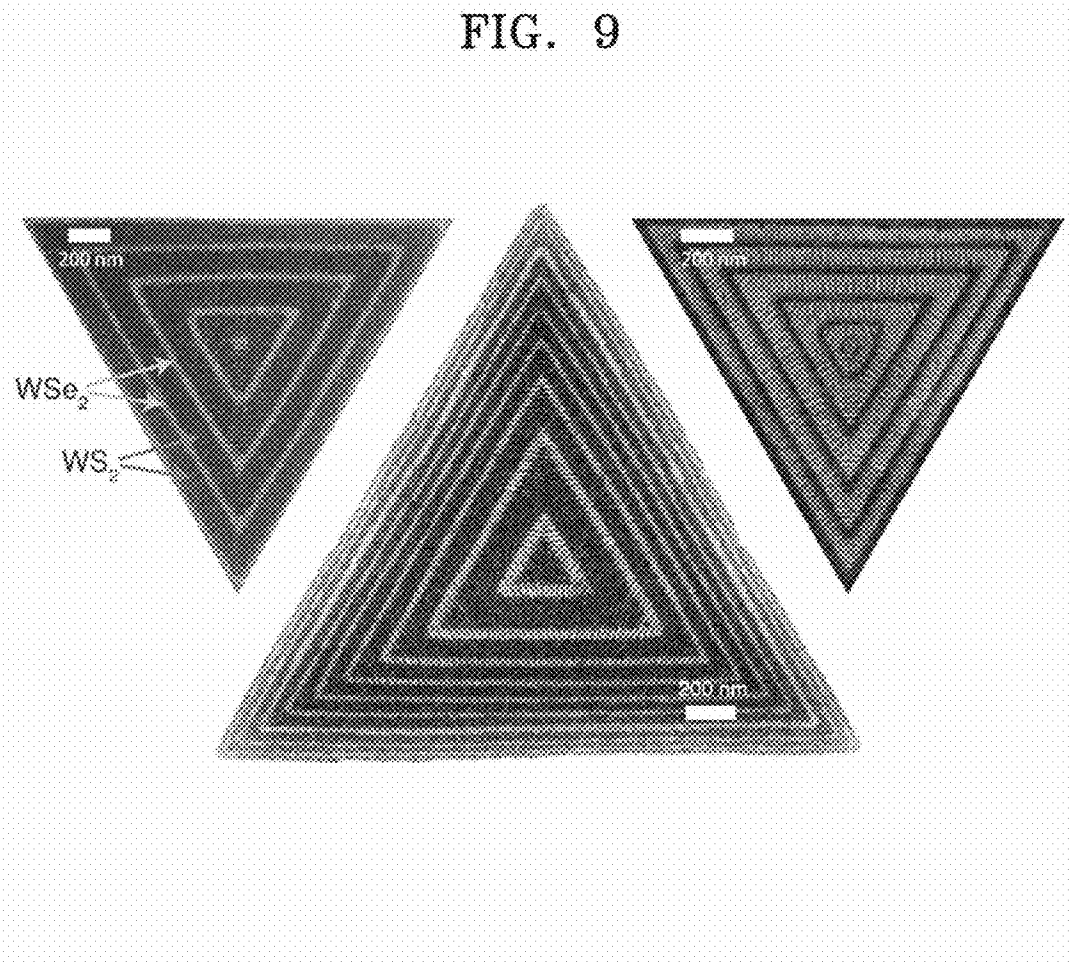


FIG. 10

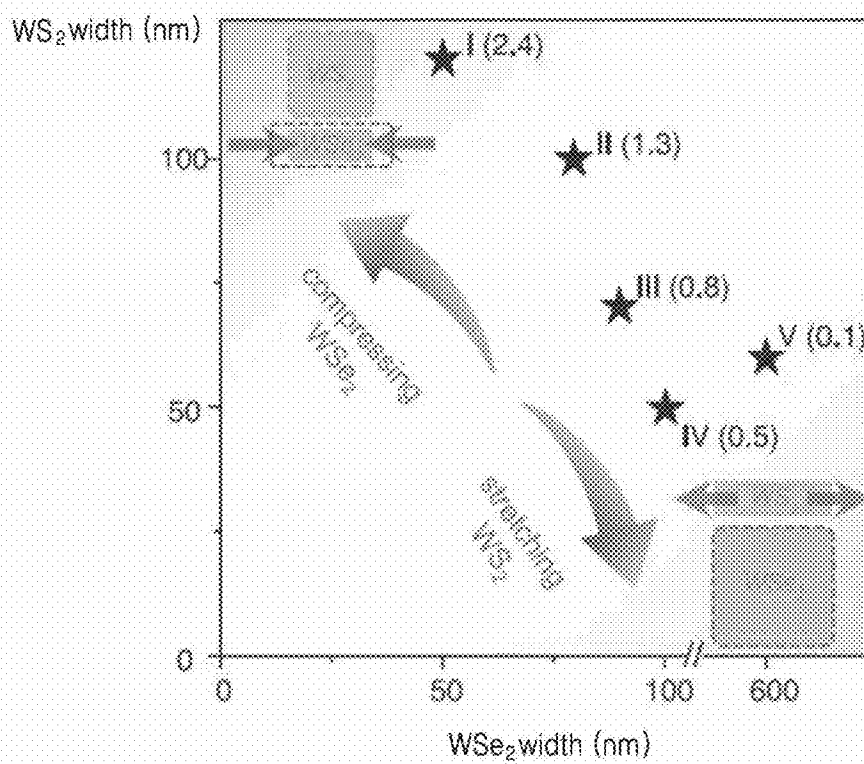


FIG. 11

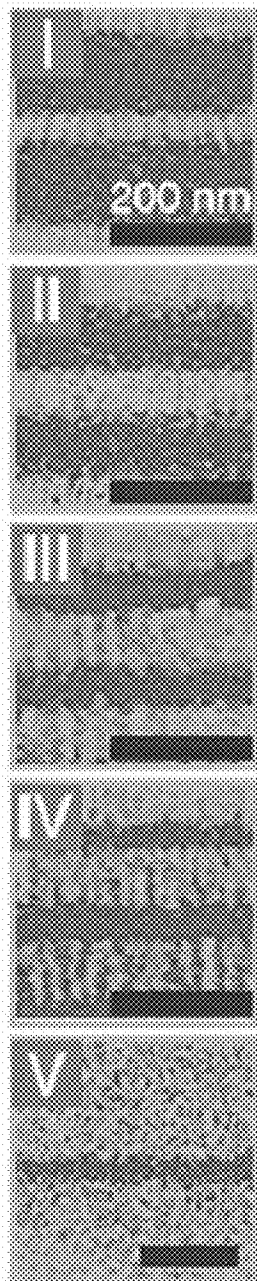


FIG. 12

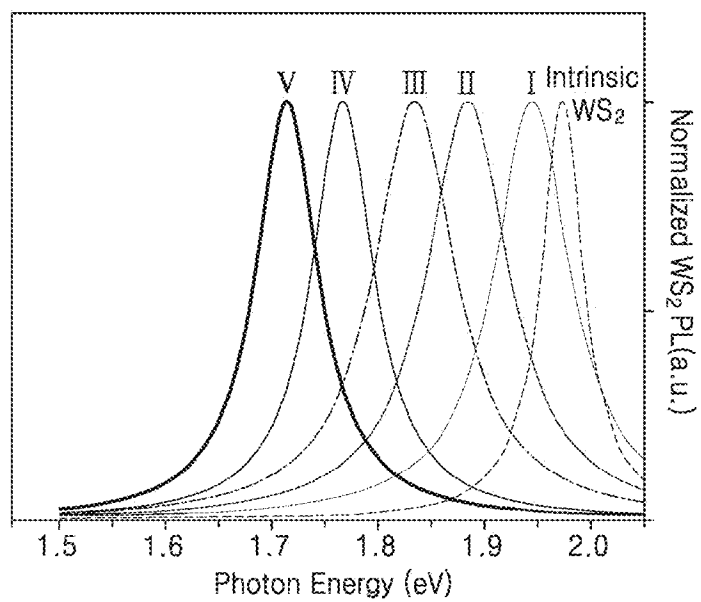


FIG. 13

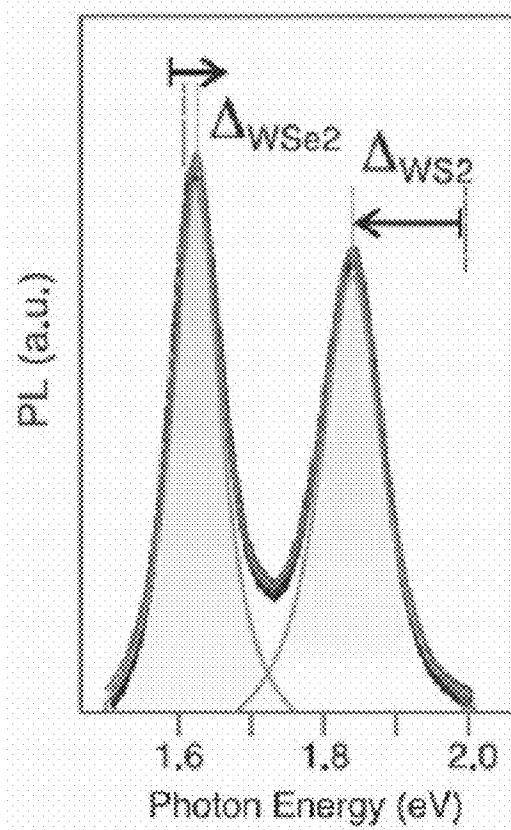


FIG. 14

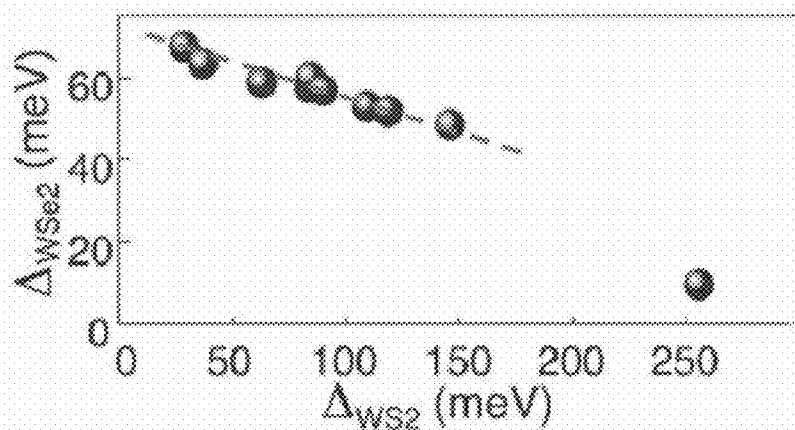


FIG. 15A

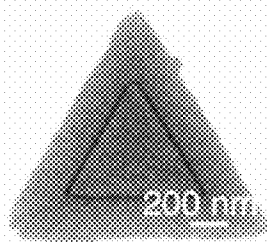


FIG. 15B

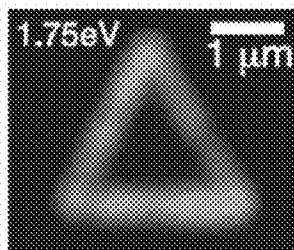


FIG. 16A

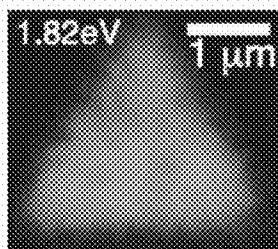


FIG. 16B

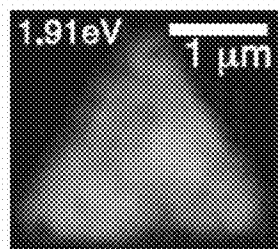


FIG. 16C

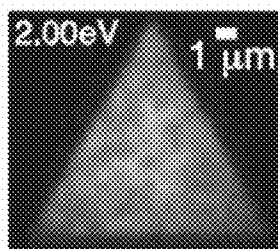


FIG. 17

< Comparative Example >

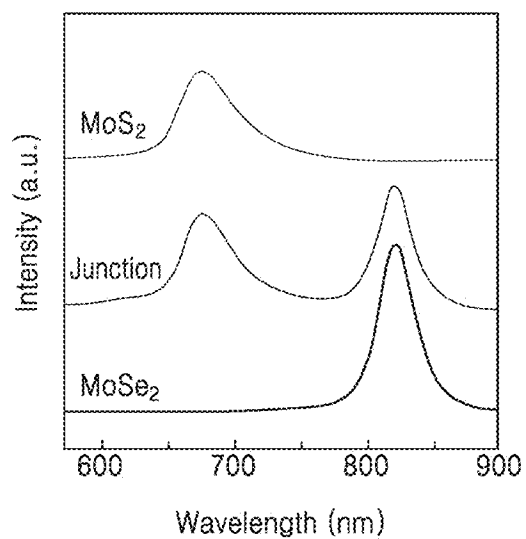


FIG. 18

< Comparative Example >

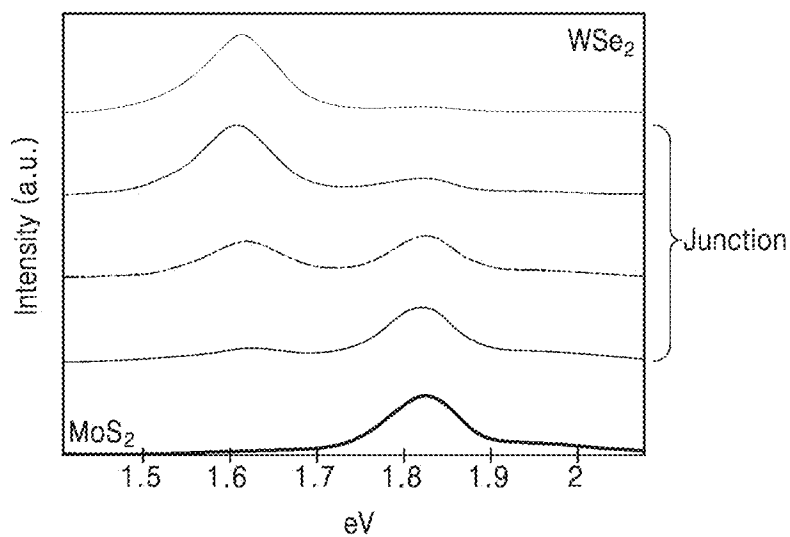


FIG. 19

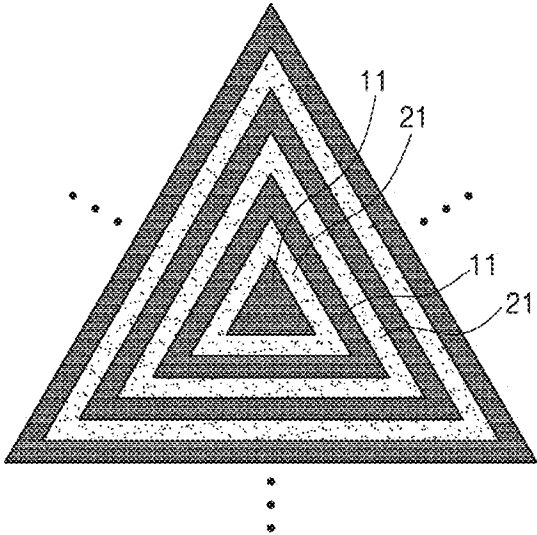


FIG. 20

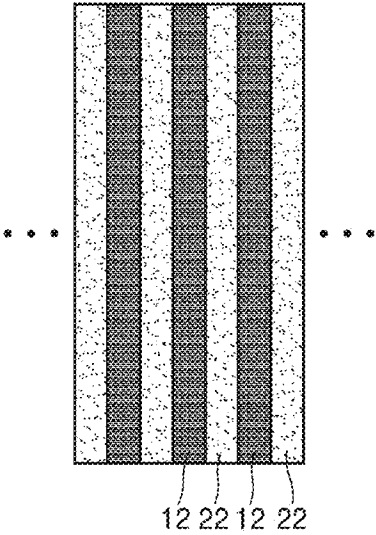


FIG. 21

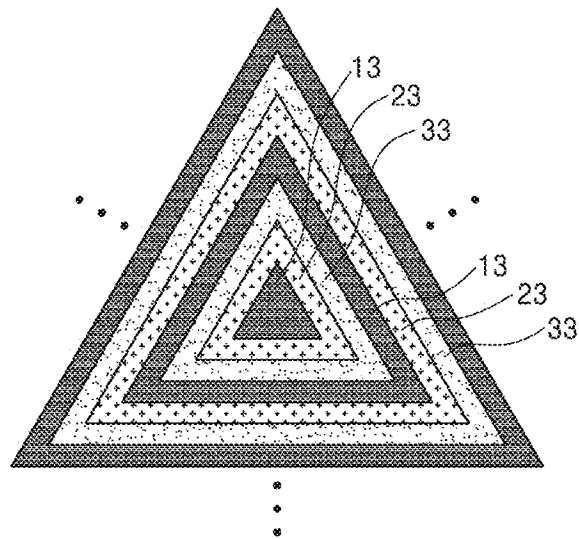


FIG. 22

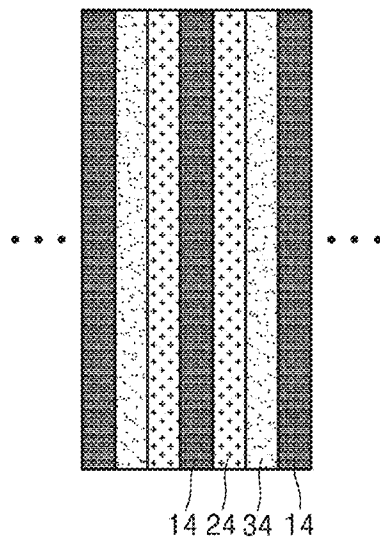


FIG. 23

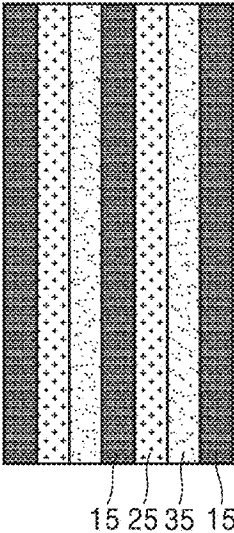


FIG. 24

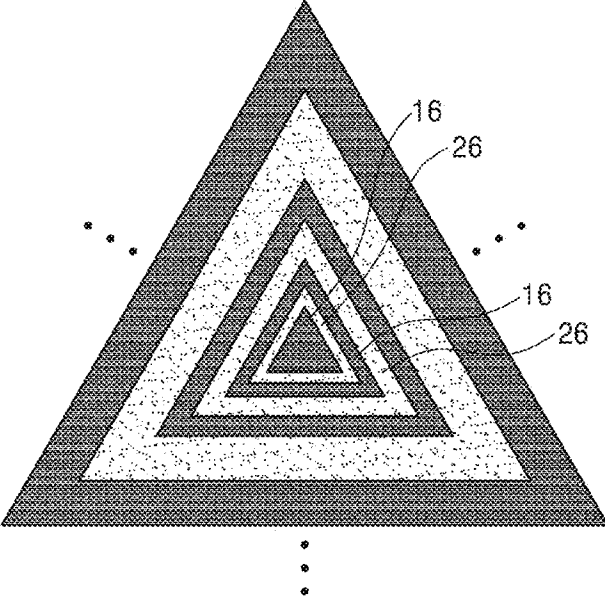


FIG. 25

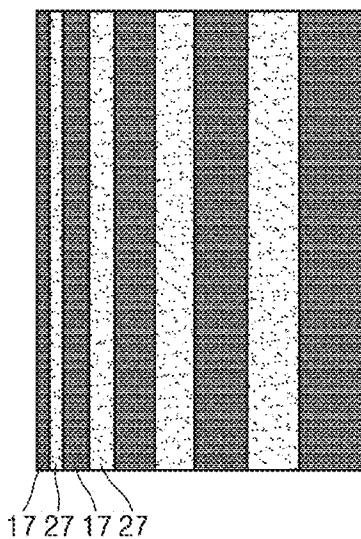


FIG. 26

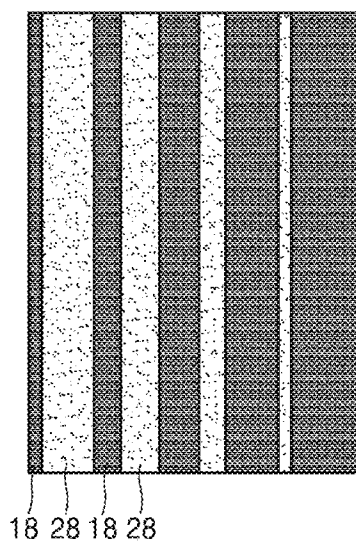


FIG. 27A

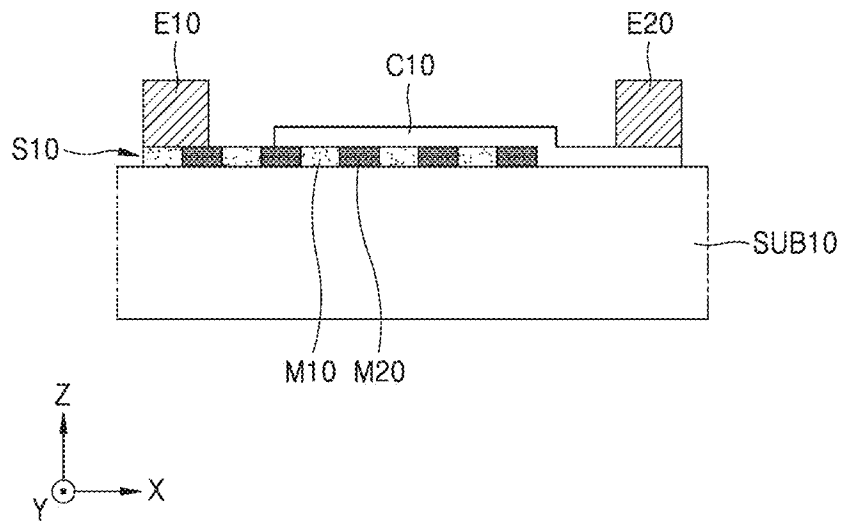


FIG. 27B

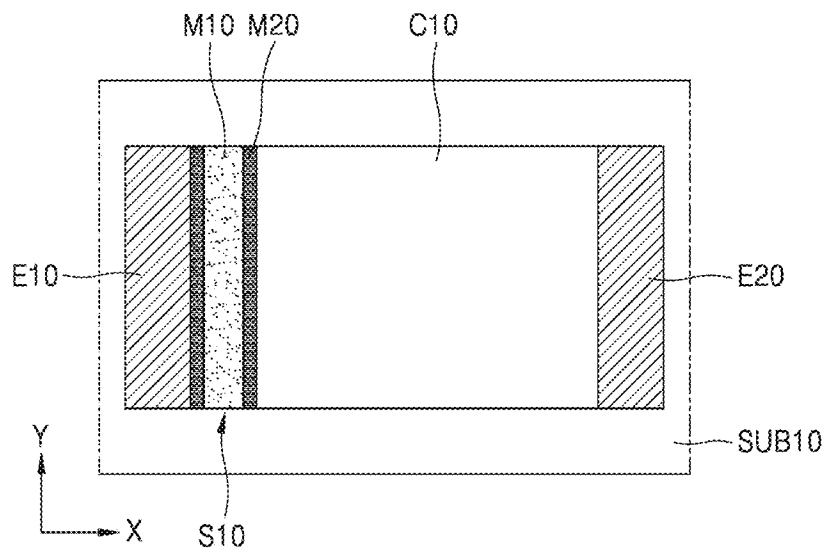


FIG. 28A

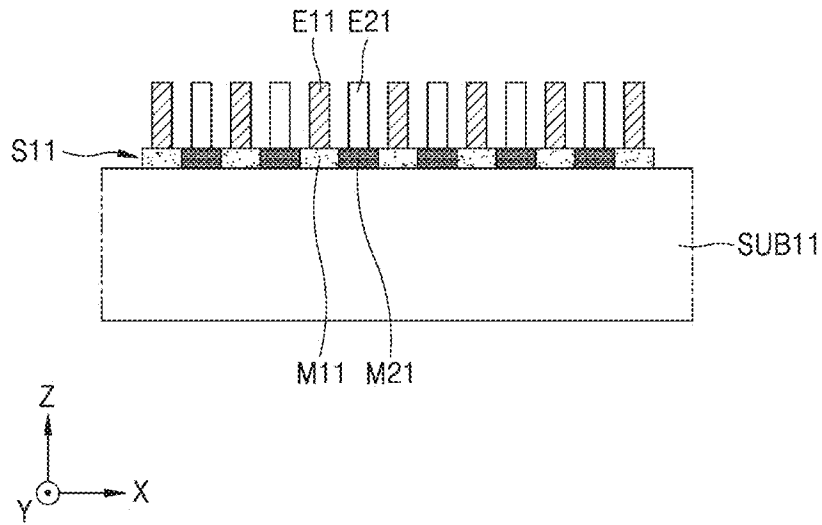


FIG. 28B

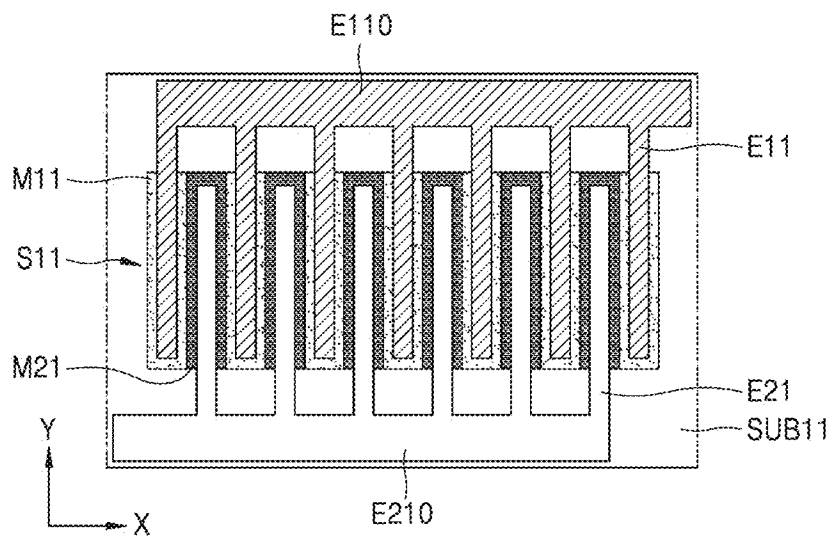
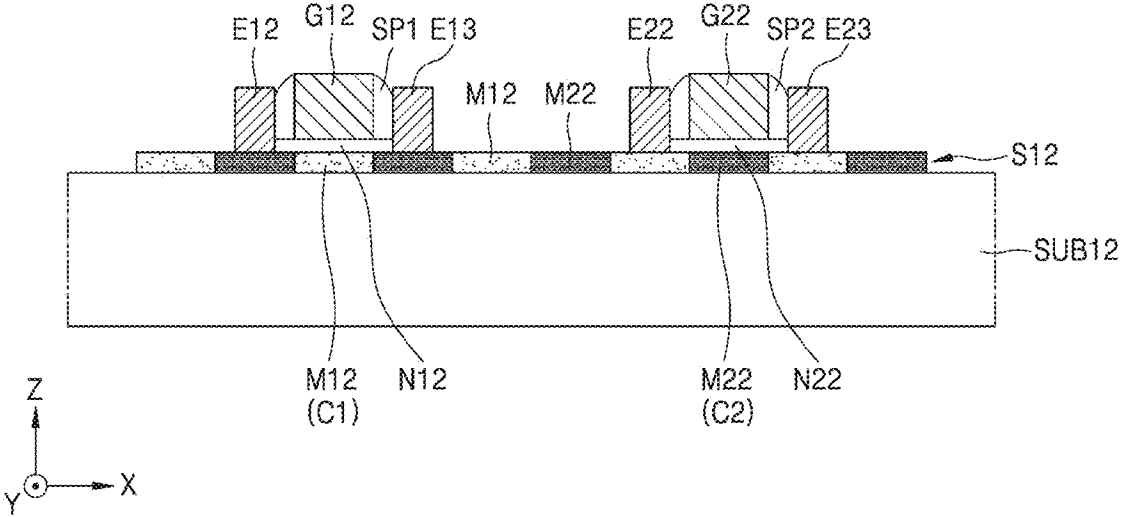


FIG. 29



**SUPERLATTICE STRUCTURE INCLUDING
TWO-DIMENSIONAL MATERIAL AND
DEVICE INCLUDING THE SUPERLATTICE
STRUCTURE**

**CROSS-REFERENCE TO RELATED
APPLICATION**

[0001] This application claims the benefit of U.S. Provisional Application No. 62/679,085, filed on Jun. 1, 2018, in the United States Patent and Trademark Office, the disclosure of which is incorporated herein in its entirety by reference.

**STATEMENT REGARDING FEDERALLY
SPONSORED RESEARCH OR DEVELOPMENT**

[0002] This invention was made with government support under FAA9550-16-0347 awarded by the Aft Force Office of Scientific Research, and by grants 1420709 and 1539918 awarded by the National Science Foundation. The government has certain rights in the invention.

BACKGROUND

1. Field

[0003] The present disclosure relates to superlattice structures including a two-dimensional material and devices including the superlattice structure.

2. Description of Related Art

[0004] A two-dimensional (2D) material is a single-layered or half-layered solid material in which atoms configure crystal structures, and a representative example of a 2D material may include graphene. Beginning with research on graphene, research and development have been conducted on various 2D materials having semiconductor or insulator properties. These 2D materials have been considered as next-generation materials that may overcome limitations on existing devices.

[0005] Recently, the research area has expanded to a technique of stacking different 2D materials. A vertical heterostructure, in which different kinds of 2D materials are stacked, may be formed easily by a layer-by-layer transfer process or a chemical vapor deposition (CVD) process, and thus, research has been actively conducted thereon. However, a lateral heterostructure, in which 2D materials are bonded in a horizontal direction, is difficult to manufacture, and there are various technical issues regarding the lateral heterostructure.

SUMMARY

[0006] Provided are lateral two-dimensional (2D) superlattice structures having excellent performance and physical properties that may be controlled.

[0007] Provided are lateral 2D superlattice structures, in which at least two 2D materials are bonded in a lateral direction.

[0008] Provided are lateral 2D superlattice structures having a bandgap adjusted by a strain.

[0009] Provided are devices including the lateral 2D superlattice structure.

[0010] Additional aspects will be set forth in part in the description which follows and, in part, will be apparent from the description, or may be learned by practice of the presented embodiments.

[0011] According to an aspect, a lateral two-dimensional (2D) superlattice structure includes at least two 2D materials that are different from each other and bonded to each other in a lateral direction. An interfacial region of the at least two 2D materials may be strained. The lateral 2D superlattice structure may have a bandgap adjusted by the interfacial region that is strained.

[0012] In some embodiments, the at least two 2D materials may include a first 2D material and a second 2D material. The first 2D material may have a first bandgap in an intrinsic state thereof. The second 2D material may have a second bandgap in an intrinsic state thereof. An interfacial region of the first 2D materials and the second 2D material and an adjacent region may have a third bandgap that is between the first bandgap and the second bandgap.

[0013] In some embodiments, the interfacial region may not include dislocations or may include 1% or less dislocations.

[0014] In some embodiments, the interfacial region of the at least two 2D material may include 2D materials having lattice mismatch of 10% or less, and may have 10% or less strain due to the lattice mismatch.

[0015] In some embodiments, the interfacial region may have a bandgap variation rate of 30% or less with respect to one of the at least two 2D materials.

[0016] In some embodiments, the at least two 2D materials may include at least two transition metal dichalcogenide (TMDC) materials that are different from each other.

[0017] In some embodiments, one or more of the at least two 2D materials may include a metal atom among Mo, W, Nb, V, Ta, Ti, Zr, Hf, Tc, Re, Cu, Ga, In, Sn, Ge, or Pb, and a chalcogenide atom among S, Se, or Te.

[0018] In some embodiments the lateral 2D superlattice structure may have a structure, in which two kinds of 2D materials are alternately and repeatedly arranged or three kinds of 2D materials are periodically arranged.

[0019] In some embodiments, lateral 2D superlattice structure may include two or more kinds of 2D materials that are arranged to have a uniform width, a uniform ratio, or both a uniform width and a uniform ratio.

[0020] In some embodiments, the lateral 2D superlattice structure may include two or more kinds of 2D materials that are arranged to have different widths according to locations thereof, different ratios from each other according to locations thereof, or both different widths and different ratios from each other according to locations thereof.

[0021] In some embodiments, the at least two 2D materials may include a first 2D material and a second 2D material. A first region of the lateral 2D superlattice structure may include the first 2D material and the second 2D material bonded to each other at a first ratio. A second region of the lateral 2D superlattice structure may include the first 2D material and the second 2D material are bonded to each other at a second ratio that is different from the first ratio. The first region may have a first adjusted bandgap and the second region may have a second adjusted bandgap. The second adjusted bandgap may be different from the first adjusted bandgap.

[0022] In some embodiments, the at least two 2D materials included in the lateral 2D superlattice structure may each have a width of 1000 nm or less.

[0023] In some embodiments, the lateral 2D superlattice structure may have a triangle shape or a square shape when seen from above.

[0024] In some embodiments, the lateral 2D superlattice structure may include a P—N—P bonding structure, an N—P—N bonding structure, a P+-P—P+ bonding structure, an N+-N—N+ bonding structure, or a combination thereof.

[0025] In some embodiments, the lateral 2D superlattice structure may include a plurality of regions having different bandgaps from one another.

[0026] According to another aspect, a two-dimensional (2D) material-containing device may include one of above-described the lateral 2D superlattice structures and at least one electrode member connected to the lateral 2D superlattice structure.

[0027] In some embodiments, the 2D material-containing device may include an electronic device.

[0028] In some embodiments, the 2D material-containing device may include an optical device.

[0029] In some embodiments, the 2D material-containing device may include at least one of a diode type device or a transistor type device.

[0030] In some embodiments, the 2D material-containing device may further include: a first electrode element connected to a first region of the lateral 2D superlattice structure; a second electrode element connected to a second region of the lateral 2D superlattice structure; and a connecting element between the lateral 2D superlattice structure and the second electrode element for connecting the lateral 2D superlattice structure to the second electrode element.

[0031] In some embodiments, the lateral 2D superlattice structure of the 2D material-containing device may include a plurality of first 2D material regions and a plurality of second 2D material regions that are alternately arranged. The 2D material-containing device may further include a first electrode structure connected to the plurality of first 2D material regions and a second electrode structure connected to the plurality of second 2D material regions.

[0032] In some embodiments, the 2D material-containing device may include a first gate structure and a second gate structure. The lateral 2D superlattice structure of the 2D material-containing device may include an N-channel region and a P-channel region. The first gate structure may be on the N-channel region and the second gate structure arranged on the P-channel region.

[0033] According to an aspect, a lateral 2D superlattice structure may include a first layer having a first 2D material and a second layer having a second 2D material. The second 2D material may be different than the first 2D material. The second layer may be bonded to the first layer in a lateral direction to define an interfacial region. The interfacial region may be strained due to a lattice mismatch between the first 2D material and the second 2D material. A band gap of the interfacial region may be between a bandgap of the first 2D material and a bandgap of the second 2D material.

[0034] In some embodiments, the lateral 2D superlattice structure may further include a plurality of first layers spaced apart from each other in the lateral direction, each having the first 2D material; and a plurality of second layers spaced apart from each other in the lateral direction, each having the second 2D material. The plurality of first layers

may include the first layer and the plurality of second layers may include the second layer. The plurality of first layers and the plurality of second layers may be alternately or periodically arranged with each other and concentrically arranged with each other. The plurality of first layers and the plurality of second layers may have a same shape. The plurality of first layers and the plurality of second layers may be different sizes from each other.

[0035] In some embodiments, the lateral 2D superlattice structure may further include a third layer having a third 2D material. The third layer may be concentrically arranged between a corresponding first layer among the plurality of first layers and a corresponding second layer among the plurality of second layers. Opposite sides of the third layer may be laterally bonded to the corresponding first layer and the corresponding second layer. An interface between the third layer and the corresponding first layer may be a coherent epitaxial interface that may be strained due to a lattice mismatch between the third 2D material and the first material. An interface between the third layer and the corresponding second layer may be a coherent epitaxial interface that may be strained due to a lattice mismatch between the third 2D material and the first material.

[0036] In some embodiments, the first material may be a first transition metal dichalcogenide, the second material may be a second transition metal dichalcogenide that is different than the first transition metal dichalcogenide, and the interfacial region may include a coherent epitaxial interface between the first material and the second material.

[0037] In some embodiments, a two-dimensional (2D) material-containing device may include one of the above-discussed the lateral 2D superlattice structures.

BRIEF DESCRIPTION OF THE DRAWINGS

[0038] These and/or other aspects will become apparent and more readily appreciated from the following description of embodiments, taken in conjunction with the accompanying drawings in which:

[0039] FIG. 1 is a perspective view showing processes of manufacturing a lateral two-dimensional (2D) superlattice structure according to an embodiment;

[0040] FIG. 2 is a conceptual diagram illustrating coherent epitaxy, according to an embodiment;

[0041] FIG. 3 is a conceptual diagram illustrating incoherent epitaxy, according to a comparative example;

[0042] FIG. 4 is an annular dark-field scanning transmission electron microscope (ADF-STEM) image of a hetero interface and a peripheral area, according to an embodiment;

[0043] FIG. 5 shows inverse fast Fourier transformation (FFT) data of the ADF-STEM image obtained from a wide region around the heterointerface of the superlattice structure formed according to an embodiment;

[0044] FIG. 6 is a diagram showing a selective-area electron diffraction (SAED) pattern obtained from the superlattice structure formed according to an embodiment;

[0045] FIG. 7 is an enlarged view showing some diffraction spots of FIG. 6, and is obtained as a result of the coherent heterostructure according to an embodiment;

[0046] FIG. 8 is a diagram showing diffraction spots in an incoherent heterostructure, according to a comparative example;

[0047] FIG. 9 is a scanning electron microscope (SEM) image showing lateral 2D superlattice structures formed according to one or more embodiments;

[0048] FIG. 10 is a graph illustrating superlattice structures having different ratios between materials from one another, according to the embodiment;

[0049] FIG. 11 shows a false-color SEM image with respect to superlattice structures I to V of FIG. 10;

[0050] FIG. 12 is a graph showing normalized photoluminescence (PL) spectra with respect to WS_2 in the superlattice structures I to V of FIG. 11;

[0051] FIG. 13 is a graph showing a representative PL spectrum of WS_2/WSe_2 superlattice structure according to the embodiment;

[0052] FIG. 14 is a graph showing Δ_{WSe_2} versus ΔW_{Se_2} with respect to WS_2/WSe_2 superlattice structures having different material ratio (width ratio) from one another;

[0053] FIG. 15A is a SEM image showing a case in which a narrow WS_2 stripe is embedded in WSe_2 and FIG. 15B is a PL image showing a heterostructure of FIG. 15A;

[0054] FIGS. 16A and 16B are PL images of WS_2/WSe_2 superlattice structures, and FIG. 16C is a PL image of an intrinsic monolayer WS_2 ;

[0055] FIG. 17 is a graph showing a PL spectrum of a heterostructure according to a comparative example;

[0056] FIG. 18 is a graph showing a PL spectrum of a heterostructure according to a comparative example;

[0057] FIGS. 19 to 23 are plan views of lateral 2D superlattice structures according to one or more embodiments;

[0058] FIGS. 24 to 26 are plan views of lateral 2D superlattice structures according to another embodiment;

[0059] FIGS. 27A and 27B are respectively a cross-sectional view and a plan view of a 2D material-containing device according to an embodiment;

[0060] FIGS. 28A and 28B are respectively a cross-sectional view and a plan view of a 2D material-containing device according to another embodiment; and

[0061] FIG. 29 is a cross-sectional view of a 2D material-containing device according to another embodiment.

DETAILED DESCRIPTION

[0062] Reference will now be made in detail to embodiments, examples of which are illustrated in the accompanying drawings, wherein like reference numerals refer to like elements throughout. In this regard, the presented embodiments may have different forms and should not be construed as being limited to the descriptions set forth herein. Accordingly, the embodiments are merely described below, by referring to the figures, to explain aspects. As used herein, the term “and/or” includes any and all combinations of one or more of the associated listed items. Expressions such as “at least one of,” when preceding a list of elements, modify the entire list of elements and do not modify the individual elements of the list.

[0063] FIG. 1 is a perspective view showing processes of manufacturing a lateral two-dimensional (2D) superlattice structure according to an embodiment.

[0064] Referring to FIG. 1, a first 2D material **10** is on a substrate **100**, and a second 2D material **20** may be bonded to side surfaces of the first 2D material. The first 2D material **10** and the second 2D material **20** may be separate layers. By repeatedly performing the above process, a lateral 2D superlattice structure **200** may be obtained. The lateral 2D superlattice structure **200** may have a coherent heterostructure and may be a 2D thin film that is atomically thin. A superlattice structure has a structure, in which two or more material

layers are periodically arranged. The coherent heterostructure may have a coherent heterointerface. The coherent heterointerface denotes a case in which atoms of two materials are matched/bonded with one another with little or no point defect or line defect (dislocation). On the other hand, an incoherent heterointerface or incoherent heterostructure denotes a case in which atoms of two materials are incoherent at an interface due to formation of the dislocation. In the embodiment, at least two different 2D materials are bonded in a lateral direction to form a coherent heterostructure, and thus, an interfacial region of the at least two 2D materials may be strained and may have a bandgap that is adjusted by the strained interfacial region.

[0065] The first and second 2D materials **10** and **20** may be, for example, different transition metal dichalcogenides (TMDC). In this case, at least one of the first and second 2D materials **10** and **20** may include one transition metal selected from Mo, W, Nb, V, Ta, Ti, Zr, Hf, Tc, and Re, and one chalcogen atom selected from S, Se, and Te. The TMDC may be expressed as, for example, MX_2 , where M denotes a transition metal and X denotes a chalcogen atom. M may include any one of Mo, W, Nb, V, Ta, Ti, Zr, Hf, Tc, Re, etc., and X may include any one of S, Se, and Te. The TMDC may include, for example, any one of MoS_2 , $MoSe_2$, $MoTe_2$, WS_2 , WSe_2 , WTe_2 , ZrS_2 , $ZrSe_2$, HfS_2 , $HfSe_2$, $NbSe_2$, $ReSe_2$, etc. However, the first and second 2D materials **10** and **20** may include other 2D materials than TMDC. For example, the first and second 2D materials **10** and **20** may include chalcogenide materials including non-transition metal. The non-transition metal may include, for example, any one of Ga, In, Sn, Ge, Pb, etc. That is, a compound of the non-transition metal such as any one of Ga, In, Sn, Ge, Pb, etc. and the chalcogenide atom such as S, Se, and Te may be used as the first and second 2D materials **10** and **20**. The chalcogenide material including the non-transition metal may include, for example, any one of $SnSe_2$, GaS, GaSe, GaTe, GeSe, In_2Se_3 , $InSnS_2$, etc. Therefore, at least one of the first and second 2D materials **10** and **20** may include one metal atom selected from Mo, W, Nb, V, Ta, Ti, Zr, Hf, Tc, Re, Cu, Ga, In, Sn, Ge, and Pb and one chalcogenide atom selected from S, Se, and Te. However, materials (atoms) suggested herein are examples, and other materials (atoms) may be used.

[0066] The lateral 2D superlattice structure **200** may be formed by a modulated chemical vapor deposition (CVD) process. The modulated CVD process may be a modulated metal-organic CVD (MOCVD) process. In this case, source materials (precursor materials) of the first and second 2D materials **10** and **20** are alternately injected into a reaction chamber, and concentration and injection time thereof may be independently and precisely controlled. For example, a first chalcogen precursor for the first 2D material **10** and a second chalcogen precursor for the second 2D material **20** may be alternately injected while constantly injecting a desired (and/or alternatively predetermined) metal precursor material into the reaction chamber. Here, a time period for injecting the first chalcogen precursor and a time period for injecting the second chalcogen precursor may be controlled. When the first 2D material **10** is WS_2 and the second 2D material **20** is WSe_2 , WS_2 and WSe_2 may grow in proportion to growth time (reaction time) thereof, but WS_2 may grow two times faster than WSe_2 with respect to the same growth time (reaction time). In addition, a flow rate of the precursor, an injection amount of a carrier gas, a reaction temperature,

and pressure may be controlled. For example, during a synthesis of the lateral 2D superlattice structure **200**, a growth environment may be constantly maintained regardless of a specific TMDC composition. When the first 2D material **10** includes a first TMDC and the second 2D material **20** includes a second TMDC that is different from the first TMDC, during the formation of the first and second TMDCs, a temperature, a pressure, an overall flow rate, etc. may be constantly maintained except for a difference of the chalcogen precursors. According to an embodiment, each of the first and second 2D materials **10** and **20** may grow at a relatively slow growth rate that is close to a thermodynamic equilibrium. For example, the growth rate may be about 20 nm/min to about 60 nm/min. As such, the interface between the first and second 2D materials **10** and **20** may have a straight heterointerface having W-zigzag edges that are generally stabilized. A dimension (width) of each first 2D material **10** and a dimension (width) of each second 2D material **20** may be controlled by optimizing processing conditions and precisely controlling the processing conditions, and thus, generation of dislocation between the first and second 2D materials may be prevented or restrained (e.g., minimized).

[0067] FIG. 2 is a conceptual diagram (plan view) for illustrating coherent epitaxy, according to an embodiment.

[0068] FIG. 2 shows a concept of the coherent epitaxy. A first 2D material **1A** and a second 2D material **2A** may be bonded to each other to form a coherent heterointerface. As such, for example, a coherent monolayer TMDC superlattice structure may be obtained. The coherent monolayer TMDC superlattice structure may entirely have a crystallized structure. An interfacial region between the first 2D material **1A** and the second 2D material **2A** may not include dislocation or may include dislocation by about 1% or less. Here, % may denote atomic %. The dislocations may exist or may not substantially exist within about 1% of atoms at the interfacial region. Also, the interfacial region may have a point defect, little or no other defect. By forming the coherent heterointerface as described above, the interfacial region between the first and second 2D materials **1A** and **2A** and peripheral first and second 2D materials **1A** and **2A** are strained, and thus, may have an adjusted bandgap. In an intrinsic state of the first 2D material **1A** and an intrinsic state of the second 2D material **2A**, lattice mismatch thereof may be within about 10% or about 5%. Since they are coherently bonded, strain of about 10% or about 5% or less may be caused due to the lattice mismatch at the interfacial region thereof. When the first 2D material **1A** has a first bandgap in the intrinsic state thereof and the second 2D material **2A** has a second bandgap in the intrinsic state thereof, the interfacial region therebetween and the peripheral region may have a third bandgap that is between the first bandgap and the second bandgap. The interfacial region may have a bandgap variation rate of about 30% or less with respect to one of the two 2D materials **1A** and **2A**. In FIG. 2, a_{\parallel} denotes a lattice constant in a direction parallel with the heterointerface and a_{\perp} denotes a lattice constant in a direction perpendicular to the heterointerface.

[0069] FIG. 3 is a conceptual diagram (plan view) for illustrating incoherent epitaxy, according to a comparative example.

[0070] FIG. 3 shows a concept of the incoherent epitaxy. A first 2D material **1B** and a second 2D material **2B** may form an incoherent heterointerface. Due to the lattice mis-

match between two different kinds of 2D materials **1B** and **2B**, point defects and line defects (dislocation) are generated on the interface thereof and a strain is not substantially caused. Also, the first 2D material **1B** exhibits optical characteristics that come from an intrinsic bandgap thereof, and the second 2D material **2B** exhibits optical characteristics that come from an intrinsic bandgap thereof. The optical characteristics of the two 2D materials **1B** and **2B** overlap each other on the interfacial region thereof. That is, independent physical property is shown in a region of each of the 2D materials **1B** and **2B**, and overlapped physical properties are shown in the interfacial region. Therefore, a bandgap tuning effect may not be obtained. In FIG. 3, a_1 and a_2 respectively denote lattice constants in a direction parallel with the heterointerface of the first 2D material **1B** and the second 2D material **2B**.

[0071] FIG. 4 is an annular dark-field scanning transmission electron microscope (ADF-STEM) image of a heterointerface (dashed line) and a peripheral area, according to an embodiment. The superlattice structure of FIG. 4 has a WS_2/WSe_2 bonding structure.

[0072] Referring to FIG. 4, the superlattice structure may maintain the lattice coherence throughout the entire region, and may not substantially include a misfit dislocation. An arrow in FIG. 4 denotes an epitaxy direction, which is also applied to FIGS. 5 to 8.

[0073] FIG. 5 shows inverse fast Fourier transformation (FFT) data of the ADF-STEM image obtained from a wide region around the heterointerface of the superlattice structure formed according to an embodiment. An inserted view at an upper left side of FIG. 5 shows spots of the FFT, and the data is obtained based on circled spots.

[0074] Referring to FIG. 5, it may be identified that atoms form continuous lines without a misfit dislocation around the heterointerface over a large area.

[0075] FIG. 6 shows a selective-area electron diffraction (SAED) pattern obtained from the superlattice structure formed according to an embodiment. The data is obtained from a region having a diameter of 280 nm.

[0076] Referring to FIG. 6, a single-crystal-like that is sharp and has isotropic diffraction spots is shown.

[0077] FIG. 7 is an enlarged view showing some diffraction spots of FIG. 6, and is obtained as a result of the coherent heterostructure according to an embodiment. FIG. 7 shows an enlarged view of spots in circles and squares of FIG. 6.

[0078] Referring to FIG. 7, diffraction data (in circles) corresponding to the direction in parallel with the heterointerface shows a single diffraction spot without separation. This denotes that a complete lattice matching is made in the direction parallel with the heterointerface. That is, it may denote $\delta_{\parallel}=0$. The diffraction data (in squares) corresponding to a direction perpendicular to the heterointerface shows similar lattice constants. Although two spots, that is, spots respectively induced from WS_2 and WSe_2 , the mismatch (δ_{\perp}) was very small, that is, 1.2%. This is very small compared with the lattice mismatch between the two materials, that is, about 4%.

[0079] FIG. 8 shows diffraction spots in an incoherent heterostructure, according to a comparative example. Measurement conditions of FIG. 8 are the same as those of FIG. 7. Results shown in FIG. 8 are obtained from the incoherent WS_2/WSe_2 heterostructure.

[0080] Referring to FIG. 8, there was found lattice mismatch of about 4% in the direction parallel with and the direction perpendicular to the heterointerface.

[0081] FIG. 9 is a scanning electron microscope (SEM) image showing lateral 2D superlattice structures formed according to one or more embodiments.

[0082] Referring to FIG. 9, monolayer WS₂/WSe₂ superlattice structures are shown. Here, regions that are relatively dark denote WS₂ and region that are relatively bright denote WSe₂. According to forming conditions, a width of each of 2D material regions may be controlled. The width of each of 2D materials forming the superlattice structure may be about 1000 nm or less. A triangle unit of each of WS₂ and WSe₂ may have an equilateral triangle shape having a high symmetric property and even width. As the coherent heterointerface is formed, the symmetry and uniformity of each triangle unit may be greatly improved.

[0083] FIG. 9 illustrates the WS₂/WSe₂ superlattice structure as an example, but the materials may vary. For example, in some embodiments, MoS₂ may be further formed between WSe₂ and WS₂, and the materials may variously change. The lateral 2D superlattice structure according to an embodiment may have a structure, in which two kinds of 2D materials are alternately and repeatedly arranged or three or more 2D materials are periodically arranged.

[0084] According to embodiments, an induced strain may vary depending on widths and/or a ratio between two or more kinds of 2D materials configuring the lateral 2D superlattice structure, and accordingly, a bandgap tuning effect may also change.

[0085] FIG. 10 is a graph illustrating superlattice structures having different ratios between materials from one another, according to an embodiment.

[0086] Referring to FIG. 10, WS₂/WSe₂ superlattice structures I to V were formed while varying a width of WS₂ (a width in a direction perpendicular to the interface) and a width of WSe₂ (a width perpendicular to the interface). Here, numerical values in parentheses denote a ratio (ρ) between the width of WS₂ (d_{WS_2}) and the width of WSe₂ (d_{WSe_2}), that is, d_{WS_2}/d_{WSe_2} . As d_{WSe_2} decreases or d_{WS_2} increases, that is, as the ratio (ρ) decreases, a tensile strain increases in WS₂ and a compressive strain may decrease in WSe₂, and the lattice constant in the horizontal direction and the lattice constant in the vertical direction with respect to WS₂ may be closer to intrinsic values. Additionally, band structures of both WS₂ and WSe₂ may be adjusted by the applied strain, and a size of a direct bandgap may be reduced due to the tensile strain and may be increased due to the compressive strain. The band structure depending upon the strain may allow a broad tuning of optical characteristics to be possible by the superlattice design.

[0087] FIG. 11 shows a false-color SEM image with respect to the superlattice structures I to V of FIG. 10.

[0088] Referring to FIG. 11, in the superlattice structures I to V, dark (e.g., blue) color represents WS₂ and light (e.g., yellow) color represents WSe₂. The superlattice structures I to V are coherent heterostructures and have different ratio (ρ) of materials from one another (see FIG. 10).

[0089] FIG. 12 is a graph showing normalized photoluminescence (PL) spectra with respect to WS₂ in the superlattice structures I to V of FIG. 11. Also, FIG. 12 also shows normalized PL spectrum with respect to intrinsic WS₂.

[0090] Referring to FIG. 12, the normalized WS₂ peak shifts to a left side from the structure I towards the structure

V. As the ratio (ρ) between the materials decreases, the normalized WS₂ peak may be away from the intrinsic WS₂ peak. The normalized WS₂ peak may correspond to the bandgap.

[0091] FIG. 13 is a graph showing a representative PL spectrum of the WS₂/WSe₂ superlattice structure according to an embodiment.

[0092] Referring to FIG. 13, the WS₂ peak may be shifted from 1.97 eV, that is, the intrinsic peak energy, to a left side by Δ_{WS_2} (that is, red-shifted), and the WSe₂ peak may be shifted from 1.61 eV, that is, the intrinsic peak energy, to a right side by Δ_{WSe_2} (that is, blue-shifted). Therefore, WS₂ and WSe₂ regions may have adjusted bandgaps.

[0093] FIG. 14 is a graph showing Δ_{WS_2} versus Δ_{WSe_2} with respect to WS₂/WSe₂ superlattice structures having different material ratio (width ratio) from one another.

[0094] Referring to FIG. 14, Δ_{WSe_2} tends to decrease as Δ_{WS_2} increases. When Δ_{WS_2} and Δ_{WSe_2} both have positive values, it denotes that WS₂ is subjected to tensile deformation and WSe₂ is subjected to compressive deformation.

[0095] FIG. 15A is a SEM image showing a case in which a narrow WS₂ stripe is embedded in WSe₂ and FIG. 15B is a PL image showing a heterostructure of FIG. 15A. The PL image of FIG. 15B is obtained from photon energy of 1.75 eV.

[0096] Referring to FIGS. 15A and 15B, it may be identified that a highly red-shifted WS₂ PL peak is generated from a strained WS₂ region.

[0097] FIGS. 16A and 16B are PL images of WS₂/WSe₂ superlattice structures, and FIG. 16C is a PL image of an intrinsic monolayer WS₂. FIG. 16A and 16B are obtained from photon energy close to the WS₂ of the corresponding superlattice structures, that is, FIG. 16A is obtained at 1.82 eV and FIG. 16B is obtained at 1.91 eV. FIG. 16C is obtained at photon energy of 2.00 eV.

[0098] Referring to FIG. 16, the superlattice structures of FIGS. 16A and 16B each have a supercell dimension smaller than a diffraction limit, and in this case, the superlattice structures show uniform PL intensity at each peak throughout the entire structure, similarly to the intrinsic WS₂ of FIG. 16C. Here, the supercell denotes a pair of 2D materials bonded to each other.

[0099] Strong epitaxial strains may be precisely engineered by the supercell dimension of nano-scale. The superlattice structure having engineered strain may be obtained by the superlattice design. Physical properties of the superlattice structure may be precisely controlled due to the engineered strain. In some cases, the superlattice structure according to embodiments may exhibit characteristics of a new material, rather than independent characteristics of a plurality of 2D materials. In other words, the bandgap tuning characteristics may be implemented in entire 2D superlattice structure. The 2D superlattice structure having a desired bandgap may be formed by using a plurality of different 2D materials. Also, by suppressing occurrence of defect at the interface, a high level of electrical characteristics may be ensured.

[0100] According to an embodiment, the first 2D material forming the superlattice structure may have a first bandgap in an intrinsic state thereof, the second 2D material may have a second bandgap in an intrinsic state thereof, the first 2D material region adjacent to an interface between the first and second 2D materials may have a third bandgap, and the second 2D material region adjacent to the interface may

have a fourth bandgap. Here, the third and fourth bandgaps may exist between the first bandgap and the second bandgap. When a size of the supercell included in the superlattice structure is small, e.g., tens of nm, the superlattice structure may entirely have an adjusted bandgap.

[0101] FIG. 17 is a graph showing a PL spectrum of a heterostructure according to a comparative example. The heterostructure according to the comparative example has a $\text{MoS}_2/\text{MoSe}_2$ structure, and an interface is an incoherent heterointerface.

[0102] Referring to FIG. 17, intrinsic characteristics of MoS_2 are shown in the MoS_2 region, intrinsic characteristics of MoSe_2 are shown in the MoSe_2 region, and characteristics of MoS_2 and MoSe_2 are shown together in the bonded portion (interface) thereof. In this structure, the physical properties of each material are independently shown in each material region, and the bandgap tuning effect is not obtained.

[0103] FIG. 18 is a graph showing a PL spectrum of a heterostructure according to a comparative example. The heterostructure according to the comparative example has a $\text{WSe}_2/\text{MoS}_2$ structure, and an interface is an incoherent heterointerface.

[0104] Referring to FIG. 18, intrinsic characteristics of WSe_2 are shown in the WSe_2 region, intrinsic characteristics of MoS_2 are shown in the MoS_2 region, and characteristics of MoS_2 and WSe_2 are independently shown or shown together in the bonded portion (interface) thereof. In this structure, the bandgap tuning effect is not obtained.

[0105] The lateral 2D superlattice structure according to one or more embodiments may have a structure, in which two or more kinds of 2D materials are alternately (periodically) arranged. Here, the two or more kinds 2D materials may be arranged to have the same width and/or the same ratio, or may be arranged to have different widths and/or different ratios according to locations thereof. In latter case, during the formation of the lateral 2D superlattice structure, the width and the ratio between the 2D materials may be gradually modulated. The lateral 2D superlattice structure may include a first region in which the first and second 2D materials are bonded with a first ratio and a second ratio in which the first and second 2D materials are bonded with a second ratio that is different from the first ratio. The first region may have a first modulated bandgap and the second region may have a second modulated bandgap that is different from the first modulated bandgap. The lateral 2D superlattice structure according to one or more embodiments may have a triangle or a square shape when it is seen from above, may include at least one bonding structure selected from $\text{P}-\text{N}$, $\text{P}-\text{N}-\text{P}$, $\text{N}-\text{P}-\text{N}$, $\text{P}^+-\text{P}^+-\text{P}^+$, and $\text{N}^+-\text{N}^+-\text{N}^+$, and may include a plurality of regions having different bandgaps from one another.

[0106] FIGS. 19 to 23 are plan views of lateral 2D superlattice structures according to one or more embodiments.

[0107] In the embodiments of FIGS. 19 to 23, the 2D materials may be formed with substantially the same widths and/or substantially the same ratio. In FIGS. 19 and 20, two kinds of 2D materials 11/21 or 12/22 are alternately arranged, and FIGS. 21 to 23, three kinds of 2D materials 13/23/33, 14/24/34, or 15/25/35 are periodically arranged. The 2D materials 11/21 in FIG. 19, 2D materials 12/22 in FIG. 20, 2D materials 13/23/33 in FIG. 22, 2D materials

14/24/34 in FIG. 22, and 2D materials 15/25/35 in FIG. 23 may be in separate layers, respectively.

[0108] FIGS. 24 to 26 are plan views of lateral 2D superlattice structures according to another embodiment.

[0109] In the embodiments of FIGS. 24 to 26, 2D materials may be formed with different widths and/or different ratio according to locations thereof. In FIGS. 24 to 26, two kinds of 2D materials 16/26, 17/27, or 18/28 are alternately arranged, and a width of each 2D material may gradually increase or decrease. Although not shown in the drawings, three or more kinds of 2D materials may be arranged while varying widths thereof. The 2D materials 16/26 in FIG. 24, 2D materials 17/27 in FIG. 25, and 2D materials 18/28 in FIG. 26 may be in separate layers, respectively.

[0110] The lateral 2D superlattice structure according to embodiments may be effectively applied to various electronic devices and optical devices. A 2D material-containing device according to an embodiment may include the lateral 2D superlattice structure described above and at least one electrode member connected to the lateral 2D superlattice structure. Also, the 2D material-containing device may include at least one of a diode type device and a transistor type device. Hereinafter, the 2D material-containing device according to an embodiment will be described below with reference to FIGS. 27 to 29.

[0111] FIGS. 27A and 27B are respectively a cross-sectional view and a plan view of a 2D material-containing device according to an embodiment.

[0112] Referring to FIGS. 27A and 27B, a lateral 2D superlattice structure S10 according to an embodiment may be arranged on a substrate SUB10. The lateral 2D superlattice structure S10 may have a structure, in which a first 2D material M10 and a second 2D material M20 are alternately bonded. The 2D material-containing device may further include a first electrode element E10 connected to the first region of the lateral 2D superlattice structure S10 and a second electrode element E20 connected to the second region of the lateral 2D superlattice structure S10. A connecting element C10 may be further provided between the lateral 2D superlattice structure S10 and the second electrode element E20 for connecting the lateral 2D superlattice structure S10 to the second electrode element E20. The connecting element C10 may include a conductive layer or a semiconductor layer, and may be transparent.

[0113] FIGS. 28A and 28B are respectively a cross-sectional view and a plan view of a 2D material-containing device according to another embodiment.

[0114] Referring to FIGS. 28A and 28B, a lateral 2D superlattice structure S11 may be provided on a substrate SUB11. The lateral 2D superlattice structure S11 may include a plurality of first and second 2D material regions M11 and M12 that are alternately arranged. A plurality of first unit electrodes E11 may be connected to the plurality of first 2D material regions M11 and a first common electrode E110 may be connected to the plurality of first unit electrodes E11. The plurality of first unit electrodes E11 and the first common electrode E110 may configure a first electrode structure. A plurality of second unit electrodes E21 may be connected to the plurality of second 2D material regions M21 and a second common electrode E210 may be connected to the plurality of second unit electrodes E21. The plurality of second unit electrodes E21 and the second common electrode E210 may configure a second electrode structure.

[0115] The device described above with reference to FIGS. 27A to 28B may include the superlattice structures S10 and S11 including a P—N diode structure having the tuned bandgap, and may be used as a photodiode or a light-emitting device. The optical characteristics/performances of the device may be modulated and improved through the bandgap tuning.

[0116] FIG. 29 is a cross-sectional view of a 2D material-containing device according to another embodiment.

[0117] Referring to FIG. 29, a lateral 2D superlattice structure S12 according to an embodiment may be arranged on a substrate SUB12. The lateral 2D superlattice structure S12 may have a structure, in which a first 2D material M12 and a second 2D material M22 are alternately arranged. The lateral 2D superlattice structure S12 may include at least one selected from P—N—P, N—P—N, P⁺—P—P⁺, and N⁺—N—N⁺ bonding structures.

[0118] A first gate electrode G12 may be provided on a region corresponding to a first channel region C1, from among the plurality of first 2D materials M12. A first gate insulating layer N12 may be arranged between the first channel region C1 and the first gate electrode G12. A first sidewall insulating layer SP1 may be arranged on opposite sides of the first gate electrode G12. Also, first and second electrode elements E12 and E13 may be further provided on the superlattice structures S12 at opposite sides of the first channel region C1. One of the first and second electrode elements E12 and E13 may be a source electrode and the other may be a drain electrode.

[0119] A second gate electrode G22 may be provided on a region corresponding to a second channel region C2, from among the plurality of second 2D materials M22. A second gate insulating layer N22 may be arranged between the second channel region C2 and the second gate electrode G22. A second sidewall insulating layer SP2 may be arranged on opposite sides of the second gate electrode G22. Also, third and fourth electrode elements E22 and E33 may be further provided on the superlattice structures S12 at opposite sides of the second channel region C2. One of the third and fourth electrode elements E22 and E33 may be a source electrode and the other may be a drain electrode. When one of the first and second channel regions C1 and C2 is an N-channel region and the other is a P-channel region, the device according to an embodiment may be a complementary metal oxide semiconductor (CMOS) type device. However, in some embodiments, the device is not limited to a CMOS type device. Transistors may be configured on channel regions of the same type. Other various modifications may be allowed.

[0120] The device described with reference to FIG. 29 may be a field effect transistor (FET) type device. A mobility of a carrier (electron or hole) of the channel regions C1 and C2 in the device may be improved due to a strain effect. Therefore, the device may have excellent performances.

[0121] In embodiments, the lateral 2D superlattice structure may be applied to various optical devices such as an optoelectronic devices, photodetectors, photovoltaic devices, phototransistors, and photo diodes, and may be also applied to various electronic devices using the transistor or diode structure. In addition, in embodiments, the lateral 2D superlattice structure may be applied to various devices.

[0122] According to the embodiments, the lateral 2D superlattice structure having excellent performances and physical properties that are easily controlled, and the lateral

2D superlattice structure in which at least two 2D materials bonded to each other in a lateral direction may be implemented. A lateral 2D superlattice structures having a bandgap adjusted by a strain may be implemented. Various devices (electronic device/optical device) having excellent performances may be implemented by applying the lateral 2D superlattice structure thereto.

[0123] In the specification, many details are described in detail, but they are not provided to limit the scope of the disclosure, and should be interpreted as illustrating the embodiment. For example, one of ordinary skill in the art would appreciate that the configuration of the lateral 2D superlattice structure described above with reference to FIGS. 1, 2, 4 to 7, 9 to 16, and 19 to 26 may be variously modified. In detail, at least a part of the lateral 2D superlattice structure may have a multi-layer structure, not the monolayer (mono atomic layer), and in this case, general characteristics of the 2D material may be maintained. Also, material composition and entire shape of the superlattice structure may be variously modified. Also, a predetermined dopant material may be further added to the superlattice structure. In addition, the configuration of the device described above with reference to FIGS. 27A to 29 is an example, but the device to which the superlattice structure is applied may be variously modified. Thus, the scope of the disclosure should be determined by the technical idea set forth in the claims, not by the embodiments.

[0124] It should be understood that embodiments described herein should be considered in a descriptive sense only and not for purposes of limitation. Descriptions of features or aspects within each embodiment should typically be considered as available for other similar features or aspects in other embodiments. While one or more embodiments have been described with reference to the figures, it will be understood by those of ordinary skill in the art that various changes in form and details may be made therein without departing from the spirit and scope as defined by the following claims.

What is claimed is:

1. A lateral two-dimensional (2D) superlattice structure, comprising:
 - at least two 2D materials that are different from each other and bonded to each other in a lateral direction,
 - an interfacial region of the at least two 2D materials being strained,
 - the lateral 2D superlattice structure having a bandgap adjusted by the interfacial region that is strained.
2. The lateral 2D superlattice structure of claim 1, wherein the at least two 2D materials include a first 2D material and a second 2D material,
 - the first 2D material has a first bandgap in an intrinsic state thereof,
 - the second 2D material has a second bandgap in an intrinsic state thereof, and
 - an interfacial region of the first 2D material and the second 2D material and an adjacent region have a third bandgap that is between the first bandgap and the second bandgap.
3. The lateral 2D superlattice structure of claim 1, wherein the interfacial region does not include dislocations or includes 1% or less dislocations.

4. The lateral 2D superlattice structure of claim 1, wherein the interfacial region of the at least two 2D materials has a lattice mismatch of 10% or less and has 10% or less strain due to the lattice mismatch.
5. The lateral 2D superlattice structure of claim 1, wherein the interfacial region has a bandgap variation rate of 30% or less with respect to one of the at least two 2D materials.
6. The lateral 2D superlattice structure of claim 1, wherein the at least two 2D materials includes at least two transition metal dichalcogenide (TMDC) materials that are different from each other.
7. The lateral 2D superlattice structure of claim 1, wherein one or more of the at least two 2D materials include a metal atom among Mo, W, Nb, V, Ta, Ti, Zr, Hf, Tc, Re, Cu, Ga, In, Sn, Ge, or Pb, and a chalcogenide atom among S, Se, or Te.
8. The lateral 2D superlattice structure of claim 1, wherein the lateral 2D superlattice structure has a structure, in which two kinds of 2D materials are alternately and repeatedly arranged or three kinds of 2D materials are periodically arranged.
9. The lateral 2D superlattice structure of claim 1, wherein the lateral 2D superlattice structure has two or more kinds of 2D materials that are arranged to have a uniform width, a uniform ratio, or both a uniform width and a uniform ratio.
10. The lateral 2D superlattice structure of claim 1, wherein the lateral 2D superlattice structure includes two or more kinds of 2D materials that are arranged to have different widths according to locations thereof, different ratios from each other according to locations thereof, or both different widths and different ratios from each other according to locations thereof.
11. The lateral 2D superlattice structure of claim 1, wherein the at least two 2D materials include a first 2D material and a second 2D material, a first region of the lateral 2D superlattice structure includes the first 2D material and the second 2D material bonded to each other at a first ratio, a second region of the lateral 2D superlattice structure includes first 2D material and the second 2D material bonded to each other at a second ratio that is different from the first ratio, the first region has a first adjusted bandgap, and the second region has a second adjusted bandgap that is different from the first adjusted bandgap.
12. The lateral 2D superlattice structure of claim 1, wherein the at least two 2D materials included in the lateral 2D superlattice structure each have a width of 1000 nm or less.
13. The lateral 2D superlattice structure of claim 1, wherein the lateral 2D superlattice structure has a triangle shape or a square shape when seen from above.
14. The lateral 2D superlattice structure of claim 1, wherein the lateral 2D superlattice structure includes a P—N—P bonding structure, an N—P—N bonding structure, a P⁺—P—P⁺ bonding structure, an N⁺—N—N⁺ bonding structure, or a combination thereof.
15. The lateral 2D superlattice structure of claim 1, wherein the lateral 2D superlattice structure includes a plurality of regions having different bandgaps from one another.
16. A two-dimensional (2D) material-containing device, comprising: the lateral 2D superlattice structure of claim 1; and at least one electrode member connected to the lateral 2D superlattice structure.
17. The 2D material-containing device of claim 16, wherein the 2D material-containing device includes an electronic device.
18. The 2D material-containing device of claim 16, wherein the 2D material-containing device includes an optical device.
19. The 2D material-containing device of claim 16, wherein the 2D material-containing device includes at least one of a diode type device or a transistor type device.
20. The 2D material-containing device of claim 16, further comprising: a first electrode element connected to a first region of the lateral 2D superlattice structure; a second electrode element connected to a second region of the lateral 2D superlattice structure; and a connecting element between the lateral 2D superlattice structure and the second electrode element for connecting the lateral 2D superlattice structure to the second electrode element.
21. The 2D material-containing device of claim 16, wherein the lateral 2D superlattice structure includes a plurality of first 2D material regions and a plurality of second 2D material regions that are alternately arranged, the 2D material-containing device further includes a first electrode structure connected to the plurality of first 2D material regions, and the 2D material-containing device further includes a second electrode structure connected to the plurality of second 2D material regions.
22. The 2D material-containing device of claim 16, further comprising: wherein the lateral 2D superlattice structure includes an N-channel region and a P-channel region, and the first gate structure is on the N-channel region, and the second gate structure is on the P-channel region.

* * * * *