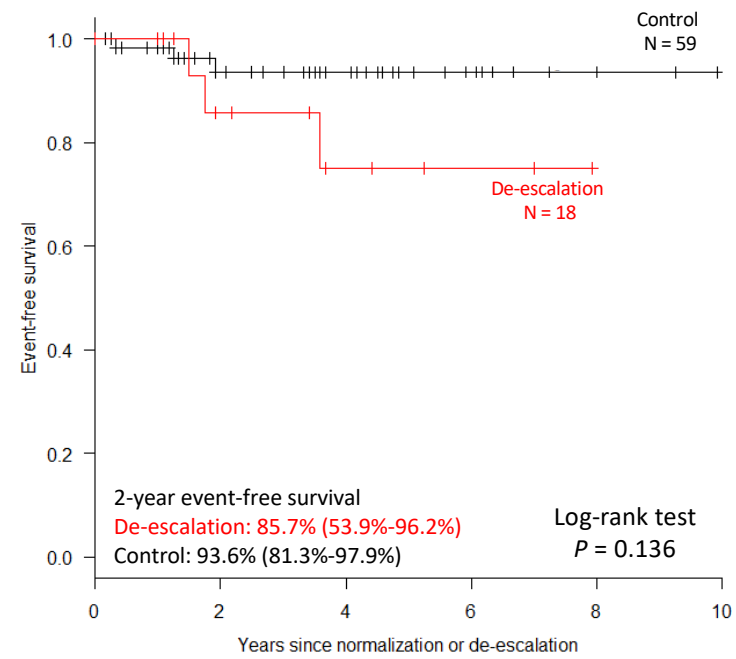


Figure S1



## Supplementary Figure Legend

**Figure S1.** Kaplan-Meier curve of event-free survival for clinical recurrence. This analysis only includes patients who had available baseline Simple Clinical Colitis Activity Index (SCCAI).

**Table S1. Comparative analysis of outcomes between patients with and without therapies immediately after therapeutic withdrawal**

<b>Outcomes</b>	<b>No IBD medications immediately after withdrawal (N = 10)</b>	<b>IBD medications immediately after withdrawal (N = 14)*</b>	<b>P-value</b>
<b>Clinical recurrence (%)</b>	11.1% (1/9)	14.3% (2/14)	1
<b>Endoscopic recurrence (%)</b>	28.6% (2/7)	27.3% (3/11)	1
<b>Histologic recurrence (%)</b>	28.6% (2/7)	36.4% (4/11)	1
<b>Start additional therapies or dose-escalation of therapies (%)</b>	55.6% (5/9)	42.9% (6/14)	0.68

\*Fourteen patients remained on IBD therapies including 5-ASA (9/14, 64%), immunomodulators (3/14, 21%), and biologics (3/14, 21%).