



US007205072B2

(12) **United States Patent**  
**Kang et al.**

(10) **Patent No.:** **US 7,205,072 B2**  
(45) **Date of Patent:** **\*Apr. 17, 2007**

(54) **LAYERED CATHODE MATERIALS FOR LITHIUM ION RECHARGEABLE BATTERIES**

6,677,082 B2 1/2004 Thackeray et al.  
6,680,143 B2 1/2004 Thackeray et al.  
2002/0055042 A1\* 5/2002 Kweon et al. .... 429/223  
2002/0119374 A1\* 8/2002 Yang et al. .... 429/231.1

(75) Inventors: **Sun-Ho Kang**, Naperville, IL (US);  
**Khalil Amine**, Downers Grove, IL (US)

**FOREIGN PATENT DOCUMENTS**

(73) Assignee: **The University of Chicago**, Chicago, IL (US)

JP 2000243394 A \* 9/2000

(\* ) Notice: Subject to any disclaimer, the term of this patent is extended or adjusted under 35 U.S.C. 154(b) by 517 days.

**OTHER PUBLICATIONS**

This patent is subject to a terminal disclaimer.

Ohzuku et al., "Layered Lithium Insertion Material of  $\text{LiNi}_{1/2}\text{Mn}_{1/2}\text{O}_2$ : A Possible Alternative to  $\text{LiCoO}_2$  for Advanced Lithium-Ion Batteries", Chemistry Letters, 2001, pp. 744-745, The Chemical Society of Japan.

(21) Appl. No.: **10/699,484**

Lu et al., "Layered Cathode Materials  $\text{Li}[\text{Ni}_x\text{Li}^{(1/3-2x/3)}\text{Mn}^{(2/3-x/3)}]\text{O}_2$  for Lithium-Ion Batteries," Electrochemical and Solid-State Letters, 2001, pp. A191-A194, vol. 4 (11), The Electrochemical Society, Inc.

(22) Filed: **Oct. 31, 2003**

Lu et al., "Understanding the Anomalous Capacity of  $\text{Li}/\text{Li}[\text{Ni}_x\text{Li}^{(1/3-2x/3)}\text{Mn}^{(2/3-x/3)}]\text{O}_2$  Cells Using In Situ X-Ray Diffraction and Electrochemical Studies", Journal of The Electrochemical Society, 2002, pp. A815-A822, vol. 149 (7), The Electrochemical Society, Inc.

(65) **Prior Publication Data**

US 2004/0091779 A1 May 13, 2004

Kim et al., "Layered  $x\text{LiMO}_2 \cdot (1-x)\text{Li}_2\text{M}'\text{O}_3$  Electrodes for Lithium Batteries; A study of  $0.95\text{LiMn}_{0.5}\text{O}_2 \cdot 0.05\text{Li}_2\text{TiO}_3$ ", Elsevier Science B.V., 2002, pp. 205-209, vol. 4, Electrochemistry Communications.

**Related U.S. Application Data**

(60) Provisional application No. 60/423,347, filed on Nov. 1, 2002.

\* cited by examiner

(51) **Int. Cl.**  
**H01M 4/48** (2006.01)  
**H01M 4/50** (2006.01)  
**H01M 4/52** (2006.01)

*Primary Examiner*—Gregg Cantelmo

(74) *Attorney, Agent, or Firm*—Foley & Lardner LLP

(52) **U.S. Cl.** ..... **429/231.95**; 429/231.1;  
429/231.3

(57) **ABSTRACT**

(58) **Field of Classification Search** ..... 429/231.1,  
429/223, 231.3, 231.95; 423/420.2, 594.4,  
423/594.6

A number of materials with the composition  $\text{Li}_{1+x}\text{Ni}_\alpha\text{Mn}_\beta\text{Co}_\gamma\text{M}'_\delta\text{O}_{2-z}\text{F}_z$  ( $\text{M}'=\text{Mg}, \text{Zn}, \text{Al}, \text{Ga}, \text{B}, \text{Zr}, \text{Ti}$ ) for use with rechargeable batteries, wherein x is between about 0 and 0.3,  $\alpha$  is between about 0.2 and 0.6,  $\beta$  is between about 0.2 and 0.6,  $\gamma$  is between about 0 and 0.3,  $\delta$  is between about 0 and 0.15, and z is between about 0 and 0.2. Adding the above metal and fluorine dopants affects capacity, impedance, and stability of the layered oxide structure during electrochemical cycling.

See application file for complete search history.

(56) **References Cited**

**U.S. PATENT DOCUMENTS**

6,040,090 A \* 3/2000 Sunagawa et al. .... 429/231.95

**20 Claims, 19 Drawing Sheets**

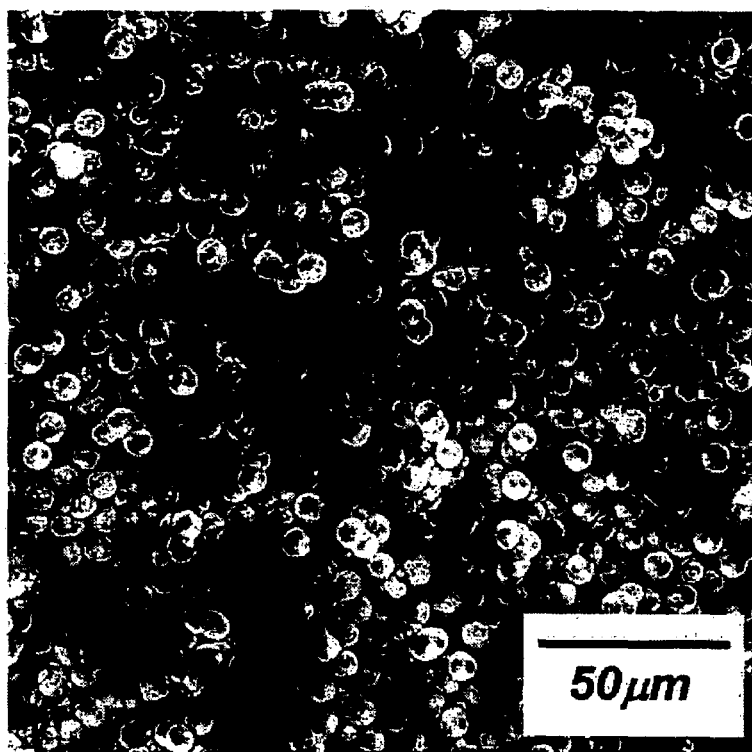


FIG. 1a



FIG. 1b

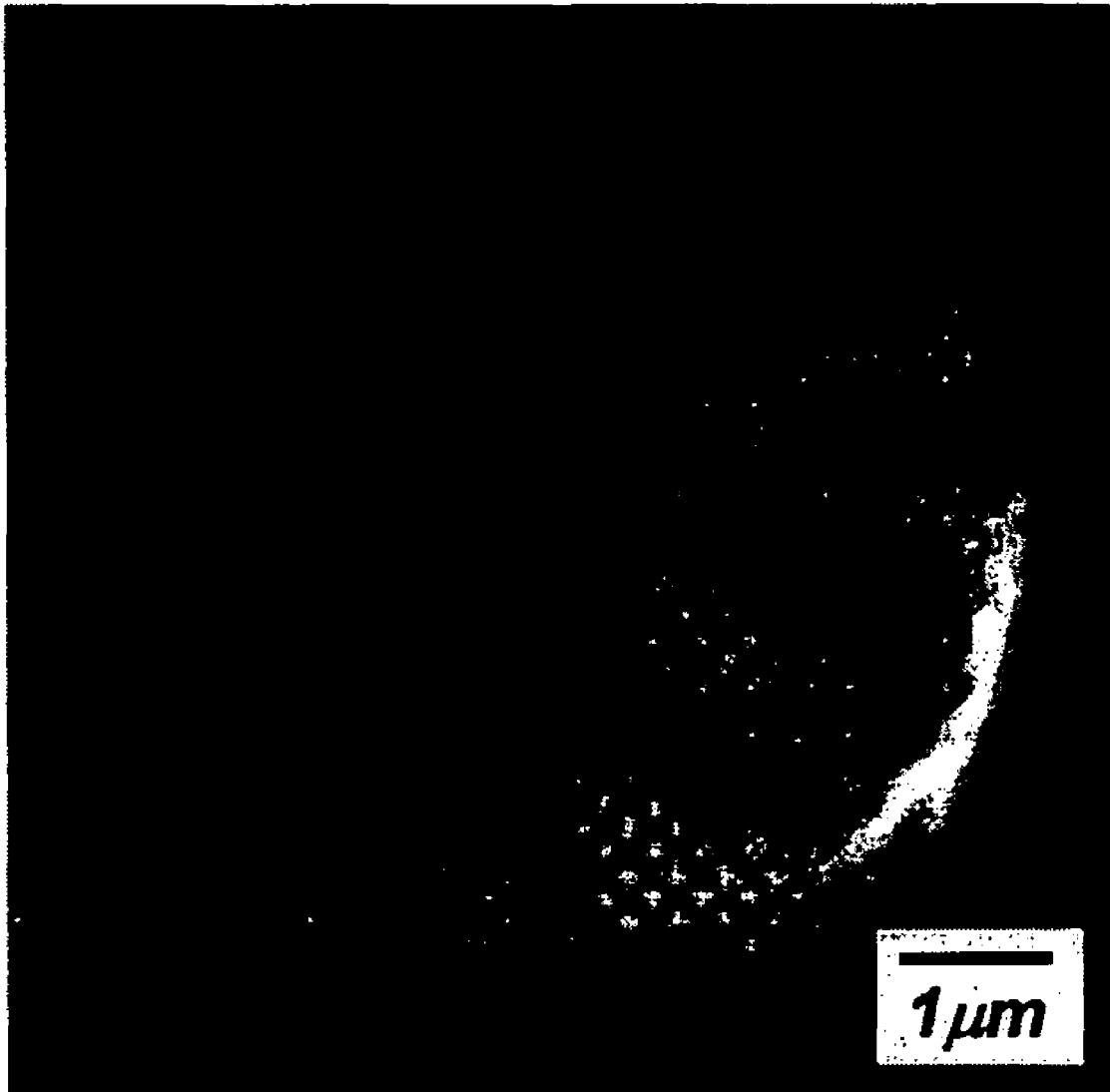


FIG. 1c

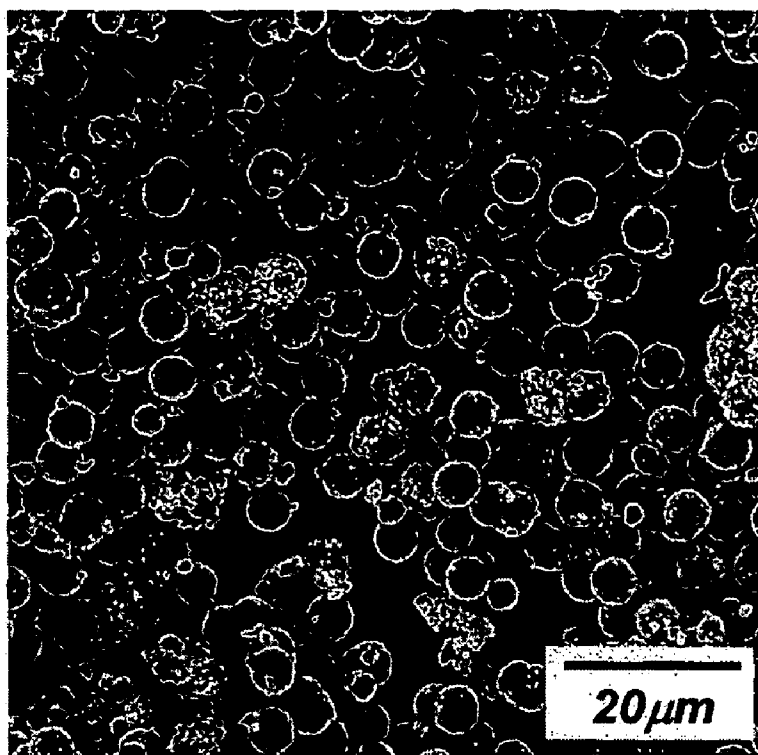


FIG. 2a

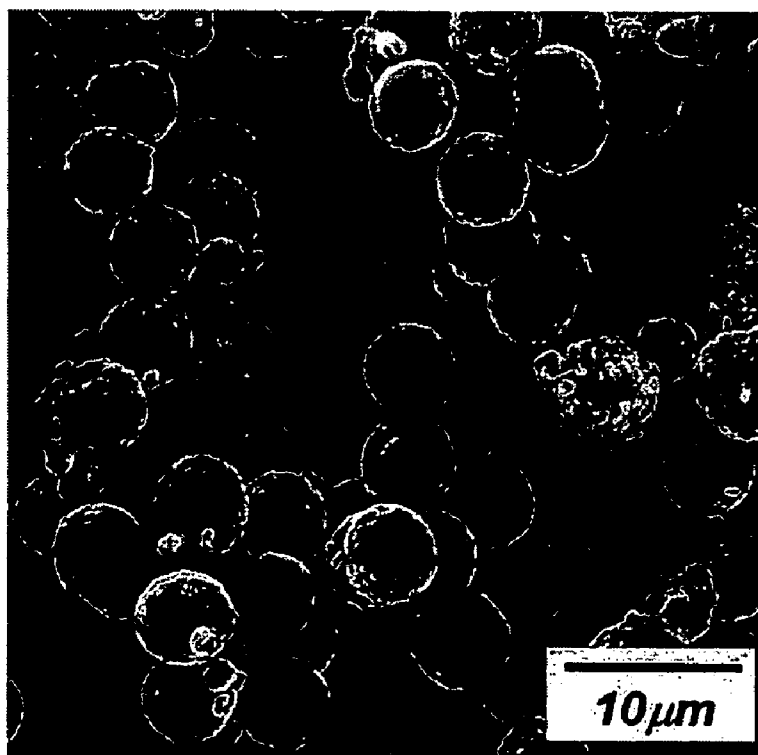


FIG. 2b

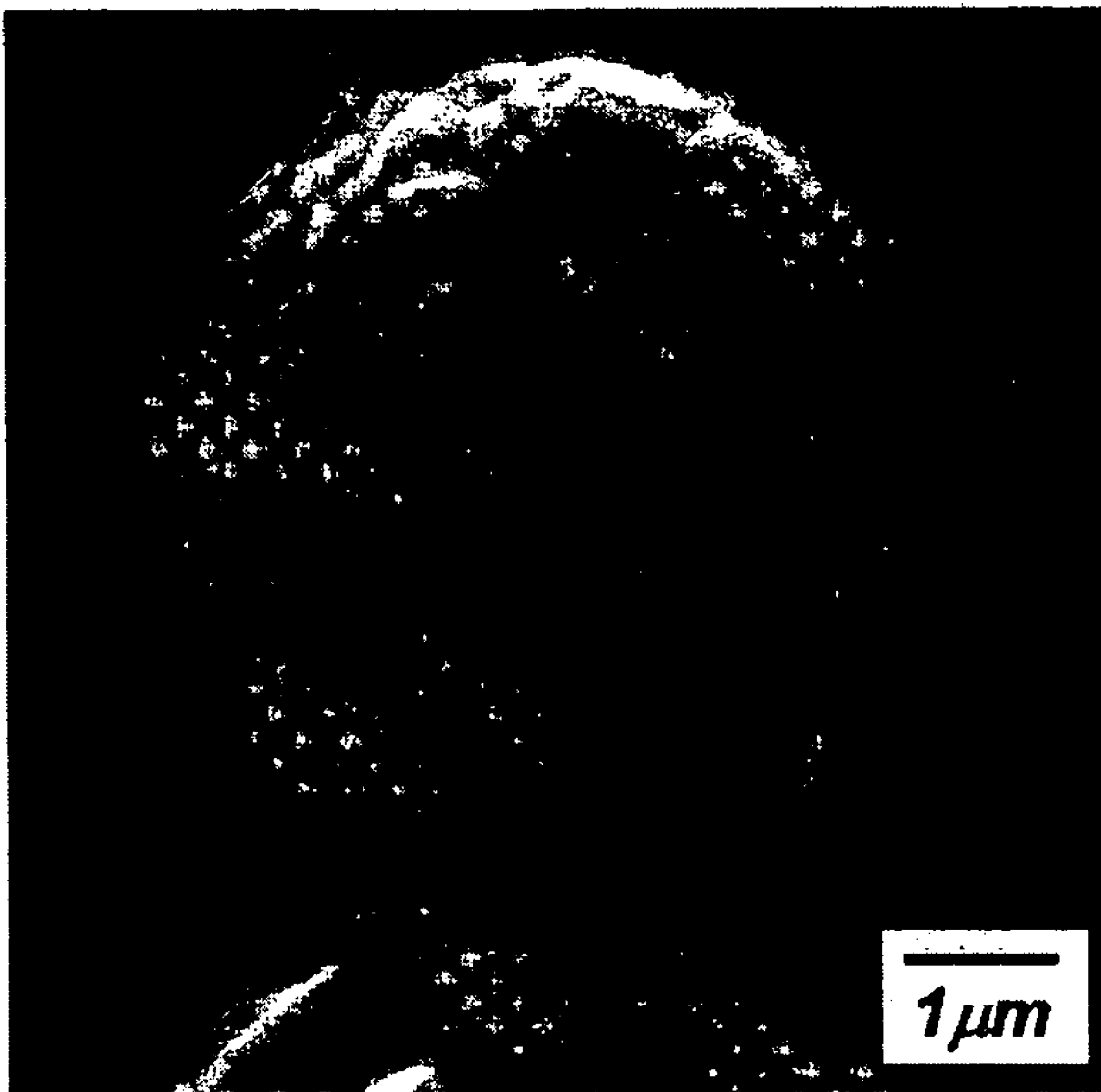


FIG. 2c

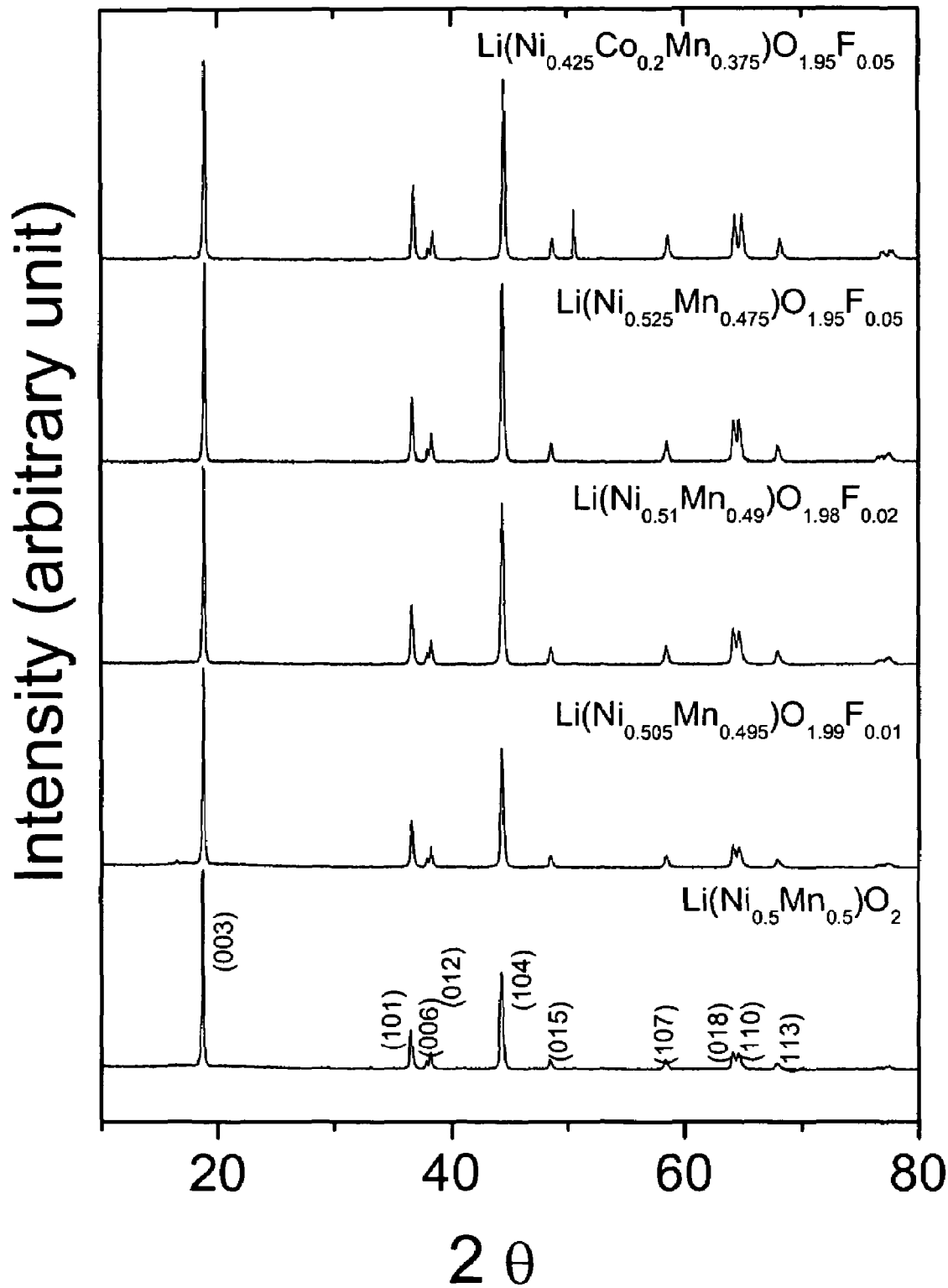


Figure 3.

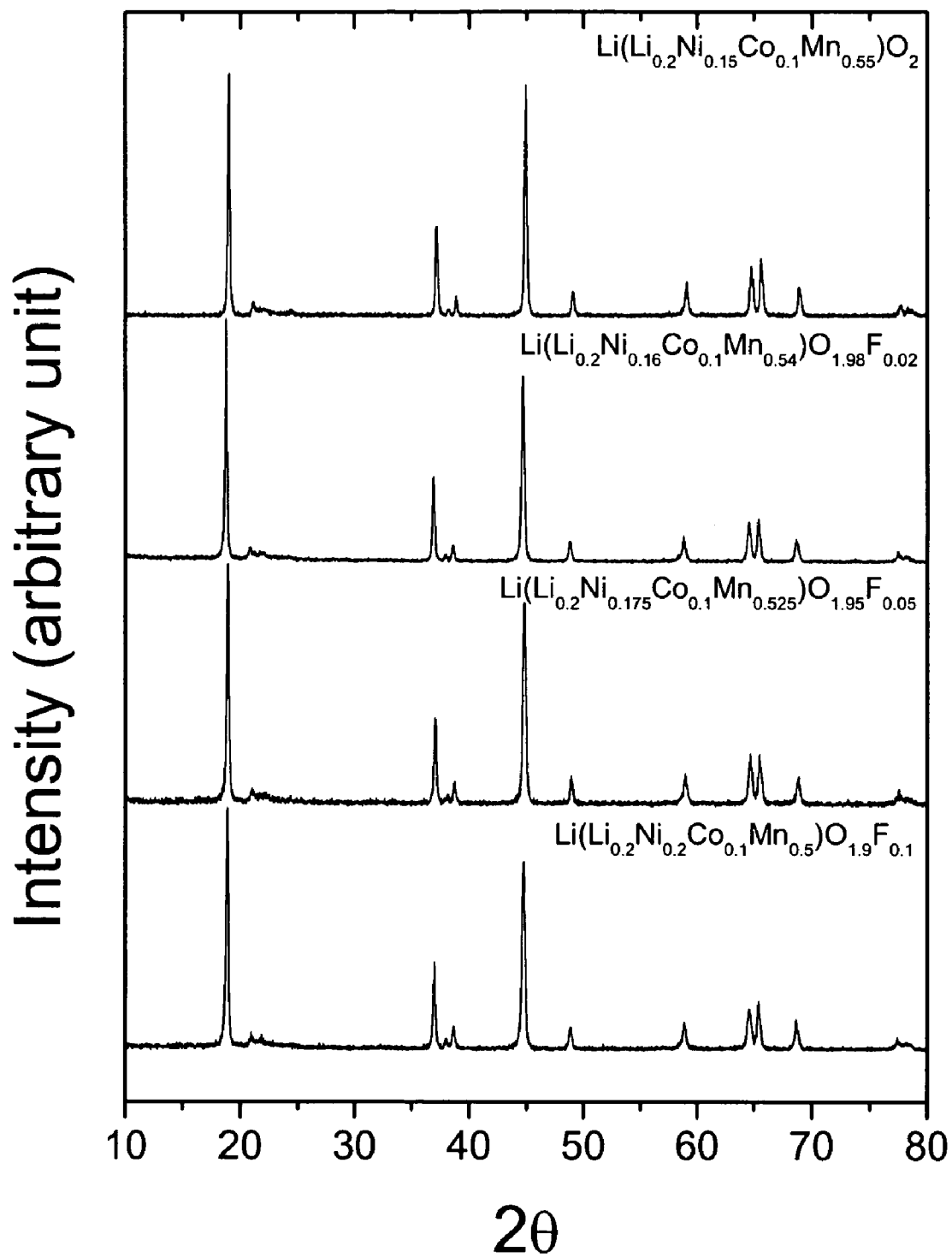


Figure 4.

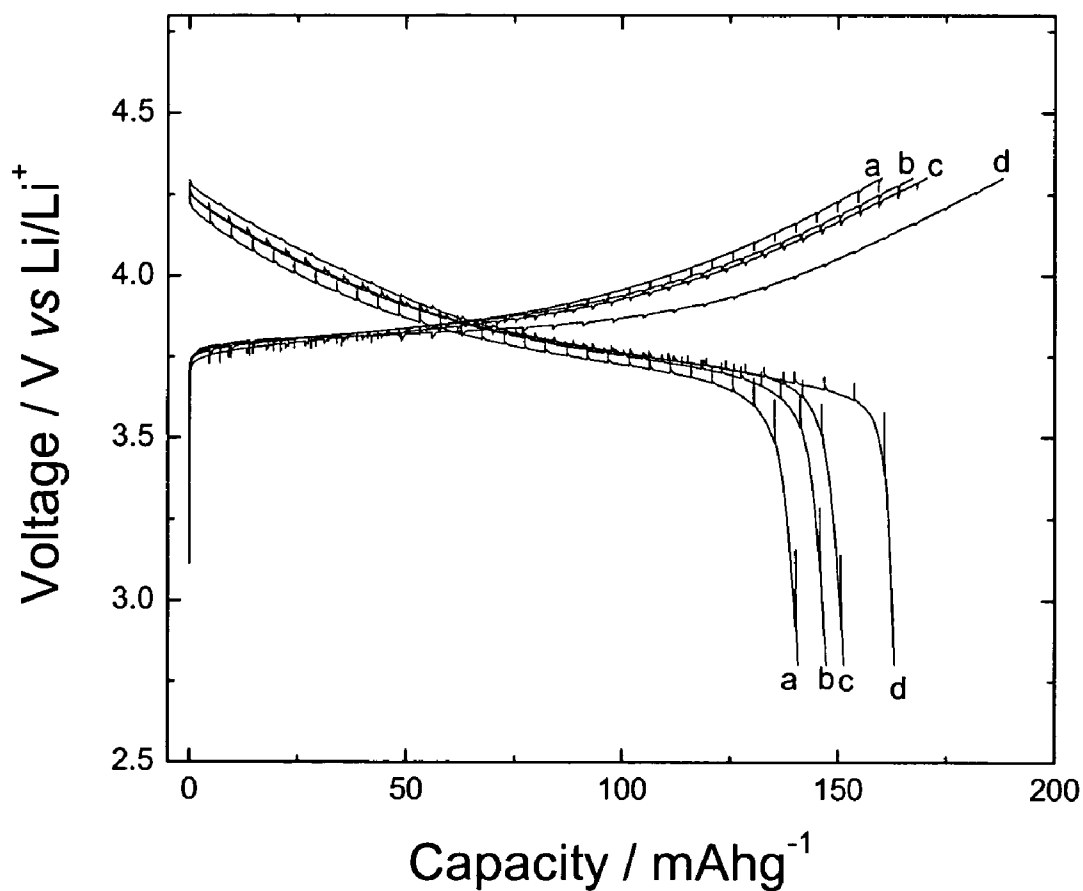


Figure 5. The first charge/discharge curves of  $\text{Li}(\text{Ni}_\alpha \text{Mn}_\beta \text{Co}_\gamma)\text{O}_{2-z}\text{F}_z$ .  
(a)  $\alpha=0.5$ ,  $\beta=0.5$ ,  $\gamma=0$ ,  $z=0$ ; (b)  $\alpha=0.505$ ,  $\beta=0.495$ ,  $\gamma=0$ ,  $z=0.01$ ;  
(c)  $\alpha=0.51$ ,  $\beta=0.49$ ,  $\gamma=0$ ,  $z=0.02$ ; (d)  $\alpha=0.41$ ,  $\beta=0.39$ ,  $\gamma=0.2$ ,  $z=0.02$



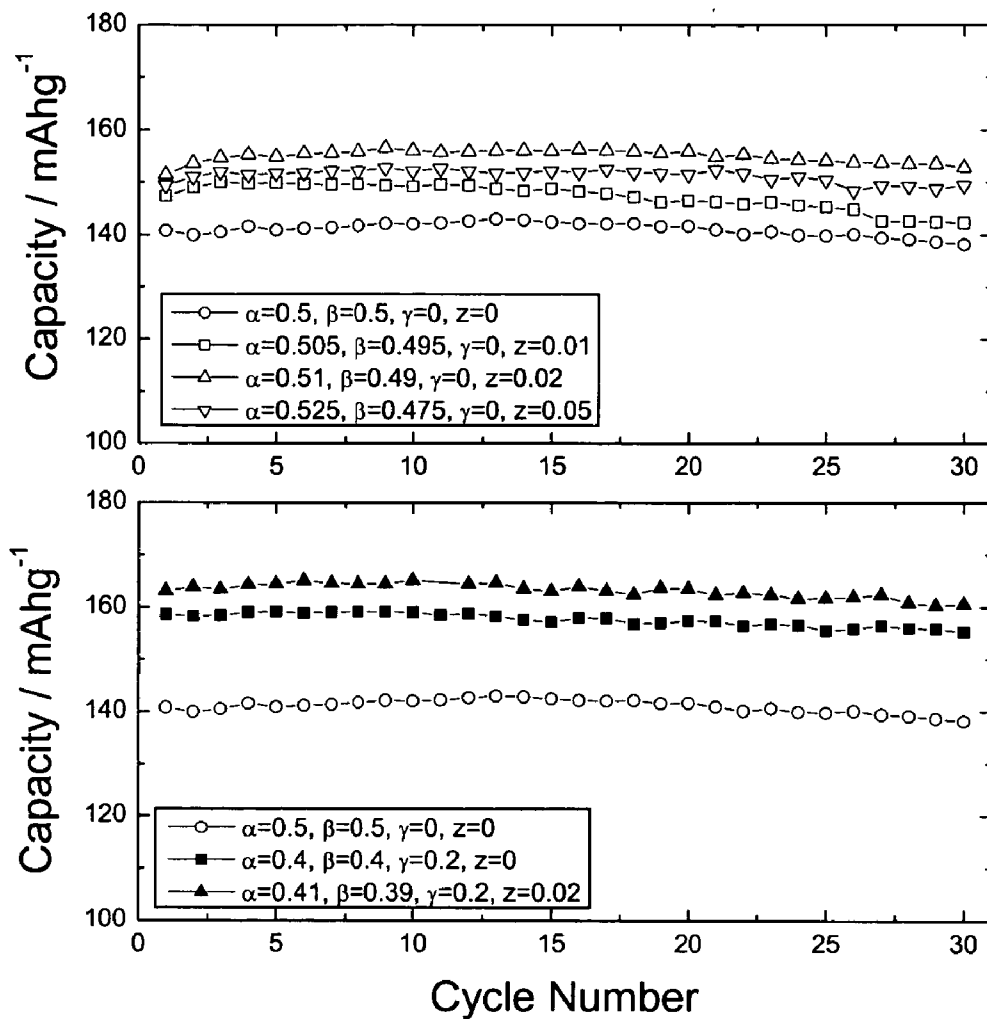


Figure 6. Variation of discharge capacity with cycling number of  $\text{Li}(\text{Ni}_\alpha \text{Mn}_\beta \text{Co}_\gamma)\text{O}_{2-z}\text{F}_z$ .

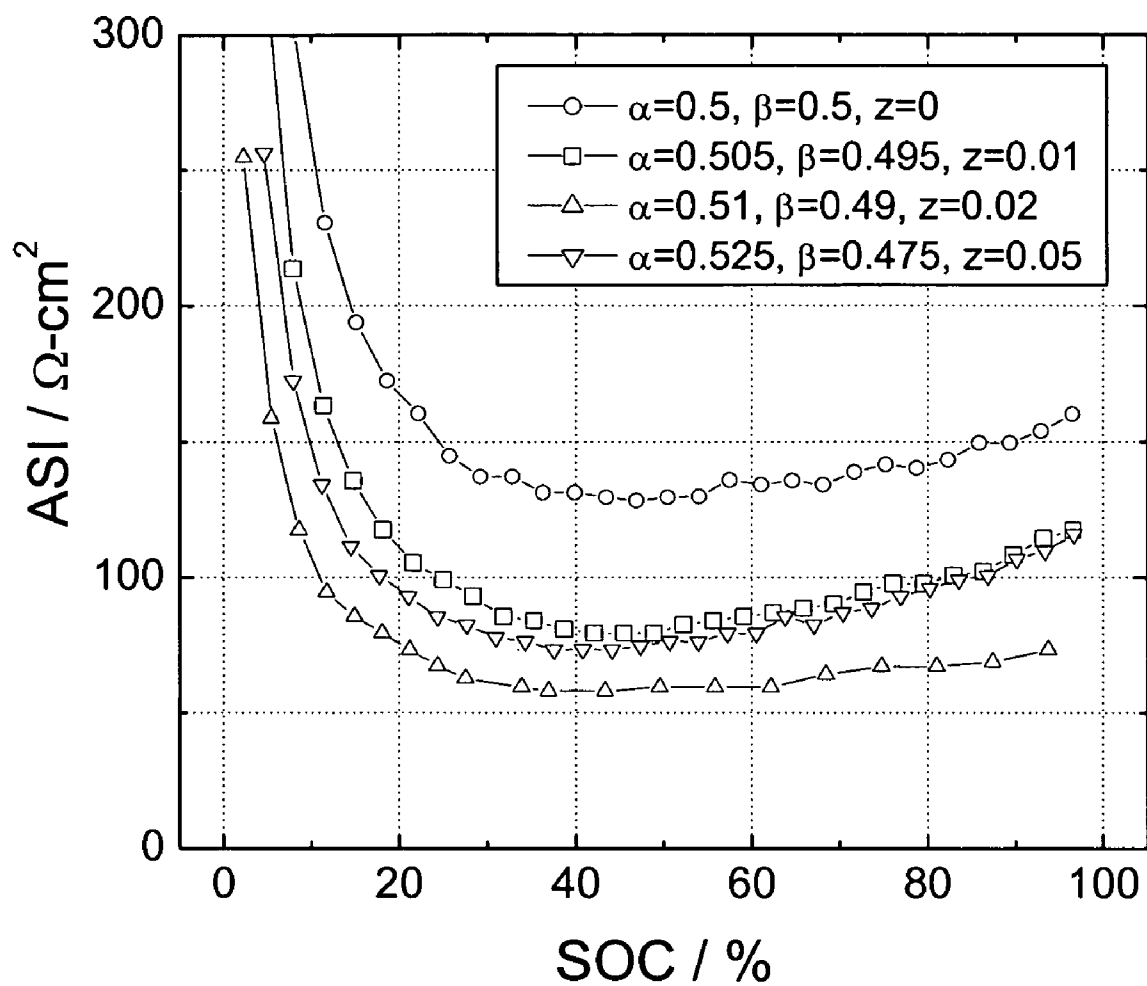


Figure 7. Area specific impedance (ASI) as a function of state of charge (SOC) of  $\text{Li}(\text{Ni}_\alpha \text{Mn}_\beta)\text{O}_{2-z}\text{F}_z$ .

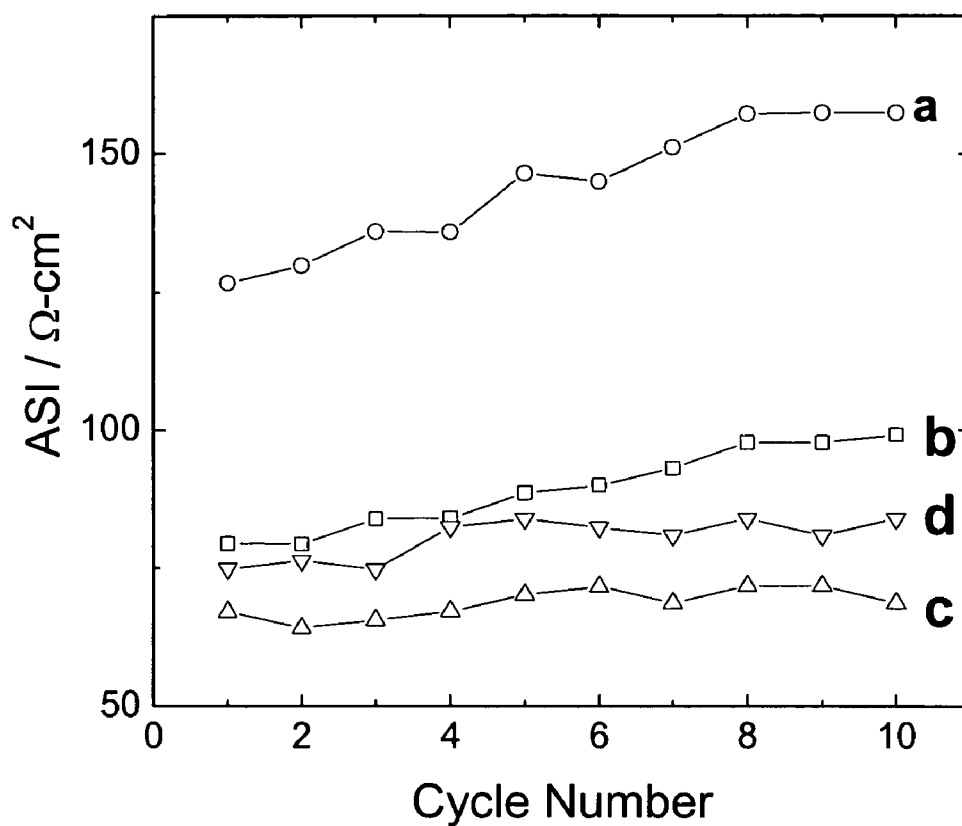


Figure 8. Variation of ASI at 50% SOC of  $\text{Li}(\text{Ni}_\alpha \text{Mn}_\beta)\text{O}_{2-z}\text{F}_z$ .  
(a)  $\alpha=0.5, \beta=0.5, z=0$ ; (b)  $\alpha=0.505, \beta=0.495, z=0.01$   
(c)  $\alpha=0.51, \beta=0.49, z=0.02$ ; (d)  $\alpha=0.525, \beta=0.475, z=0.05$

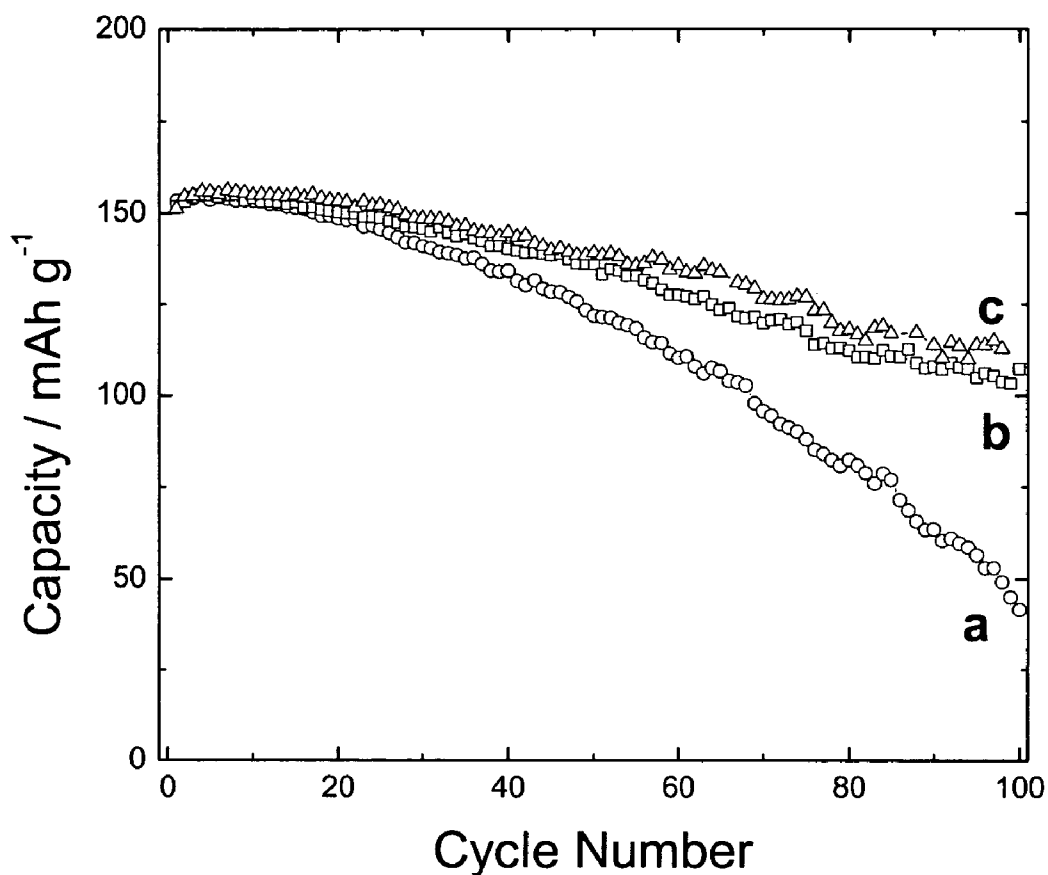


Figure 9. Variation of discharge capacity with cycling of Li/ Li(Ni<sub>α</sub> Mn<sub>β</sub> Co<sub>γ</sub>)O<sub>2</sub> cells at room temperature.

(a)  $\alpha=0.4$ ,  $\beta=0.4$ ,  $\gamma=0.2$ , uncoated;

(b)  $\alpha=0.4$ ,  $\beta=0.4$ ,  $\gamma=0.2$ , coated with 0.5wt% Al-isopropoxide;

(c)  $\alpha=0.4$ ,  $\beta=0.4$ ,  $\gamma=0.2$ , coated with 1.0wt% Al-isopropoxide.

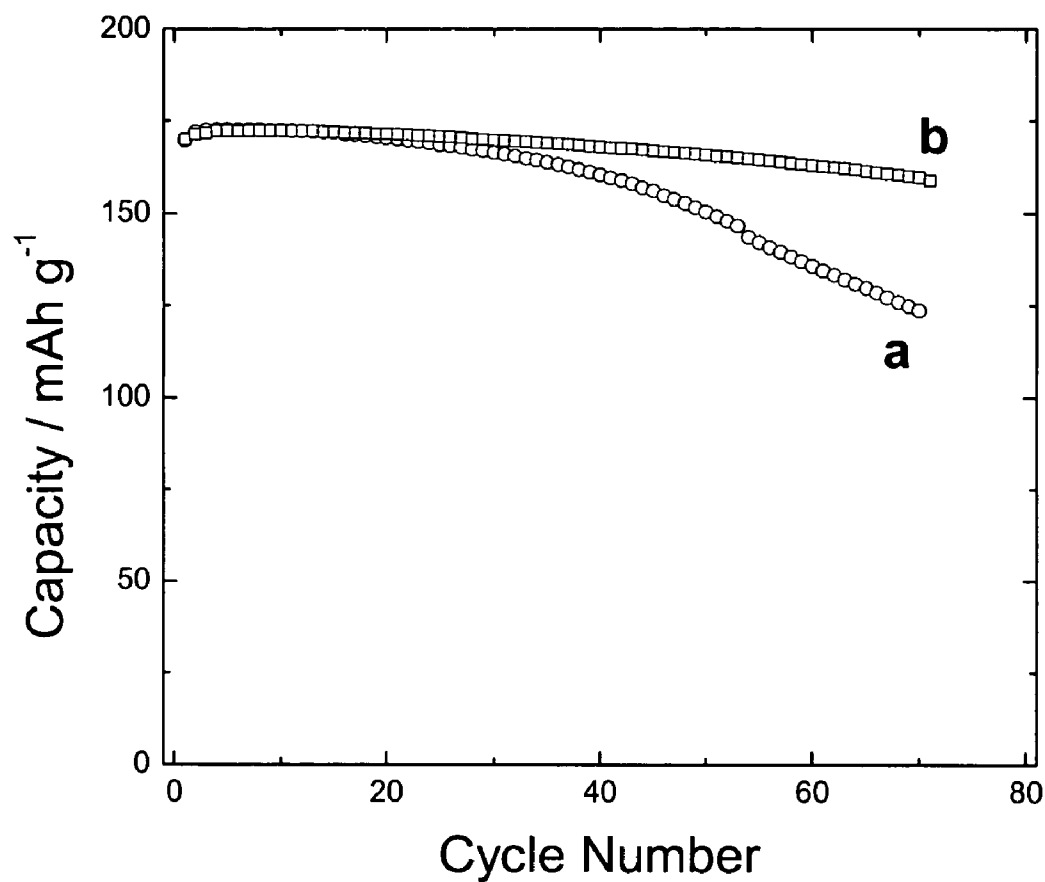


Figure 10. Variation of discharge capacity with cycling of Li/ Li(Ni<sub>α</sub> Mn<sub>β</sub> Co<sub>γ</sub>)O<sub>2</sub> cells at 55°C.

(a)  $\alpha=0.4$ ,  $\beta=0.4$ ,  $\gamma=0.2$ , uncoated;

(b)  $\alpha=0.4$ ,  $\beta=0.4$ ,  $\gamma=0.2$ , coated with 0.5wt% Al-isopropoxide.

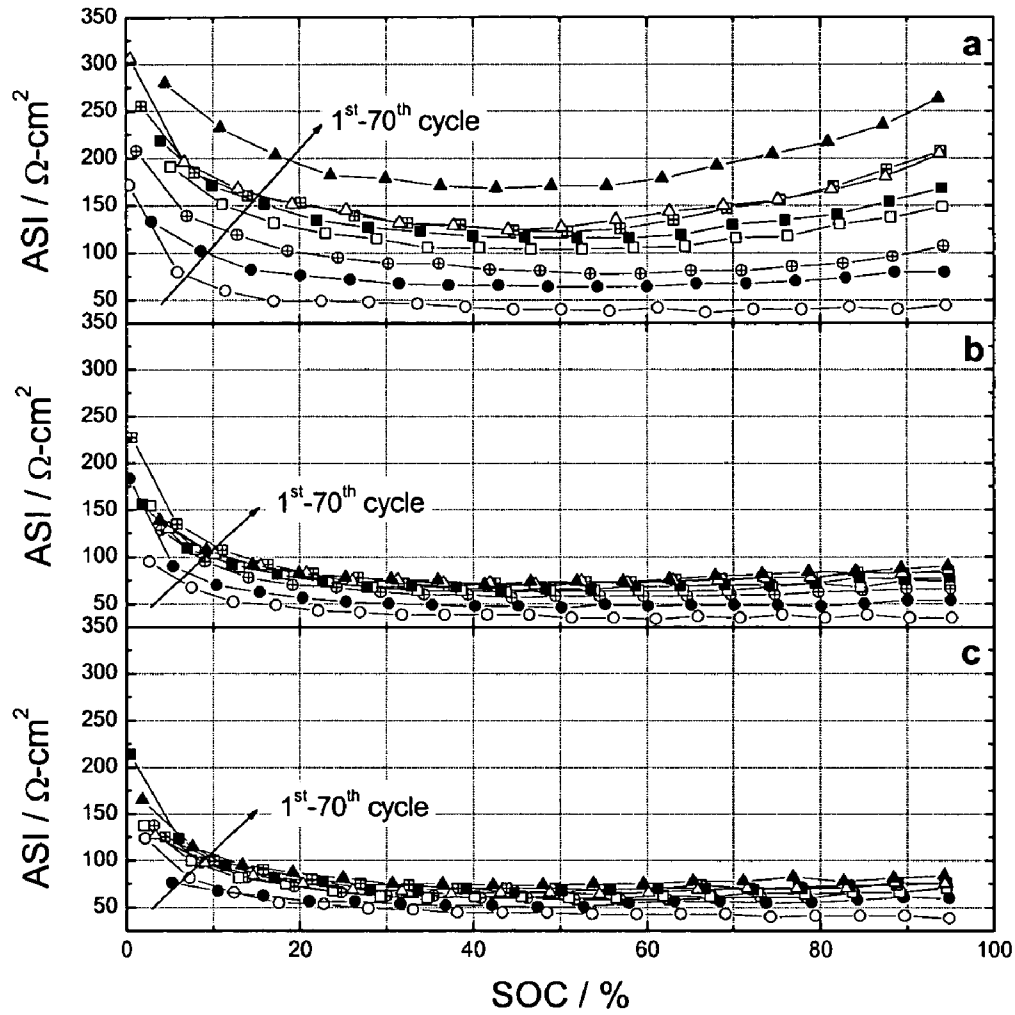


Figure 11. Variation of area specific impedance (ASI) with cycling measured with C/ Li(Ni<sub>α</sub> Mn<sub>β</sub> Co<sub>γ</sub>)O<sub>2</sub> cells.

- (a)  $\alpha=0.4, \beta=0.4, \gamma=0.2$ , uncoated;
- (b)  $\alpha=0.4, \beta=0.4, \gamma=0.2$ , coated with 0.5wt% Al-isopropoxide;
- (c)  $\alpha=0.4, \beta=0.4, \gamma=0.2$ , coated with 1.0wt% Al-isopropoxide.

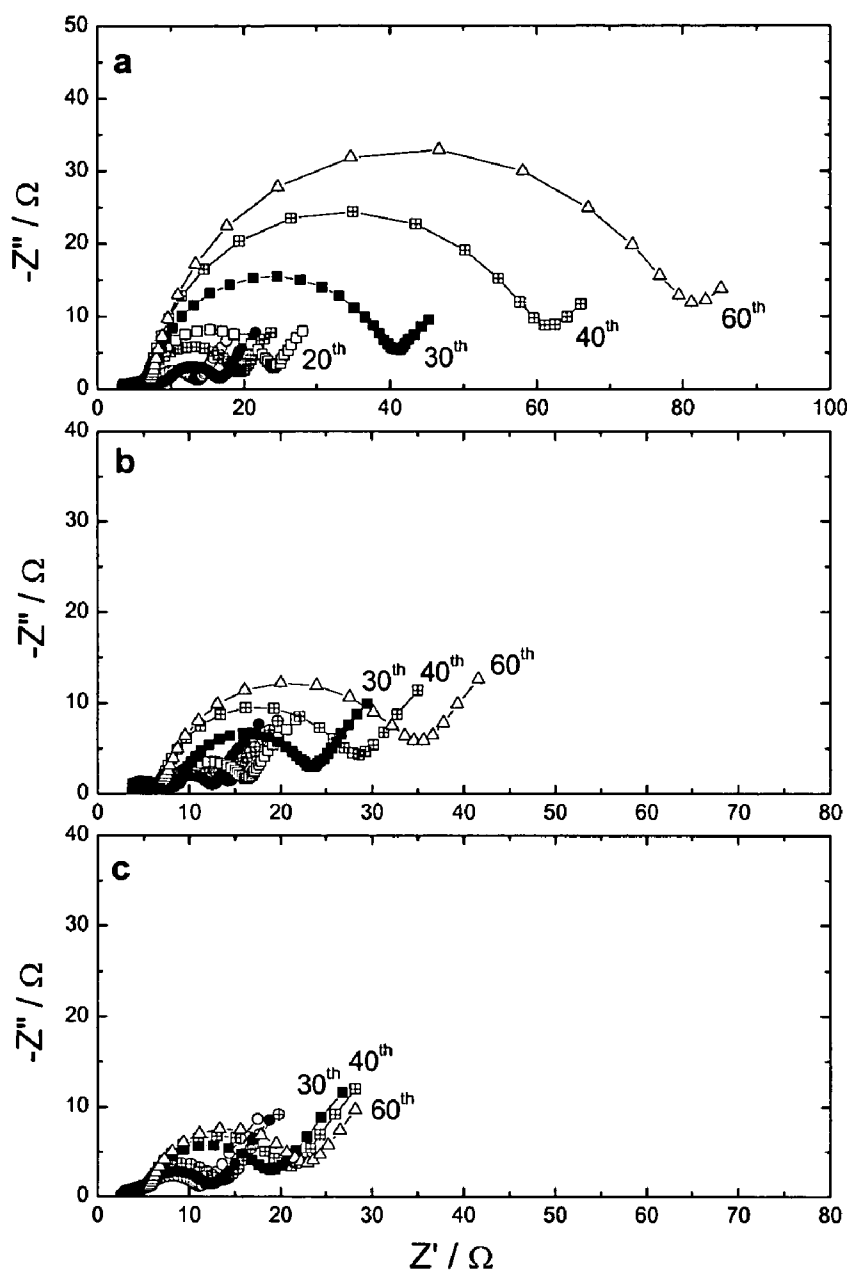


Figure 12. Variation of a.c. impedance with cycling measured with C/  $\text{Li}(\text{Ni}_\alpha \text{Mn}_\beta \text{Co}_\gamma)\text{O}_2$  cells.

- (a)  $\alpha=0.4$ ,  $\beta=0.4$ ,  $\gamma=0.2$ , uncoated;
- (b)  $\alpha=0.4$ ,  $\beta=0.4$ ,  $\gamma=0.2$ , coated with 0.5wt% Al-isopropoxide;
- (c)  $\alpha=0.4$ ,  $\beta=0.4$ ,  $\gamma=0.2$ , coated with 1.0wt% Al-isopropoxide.

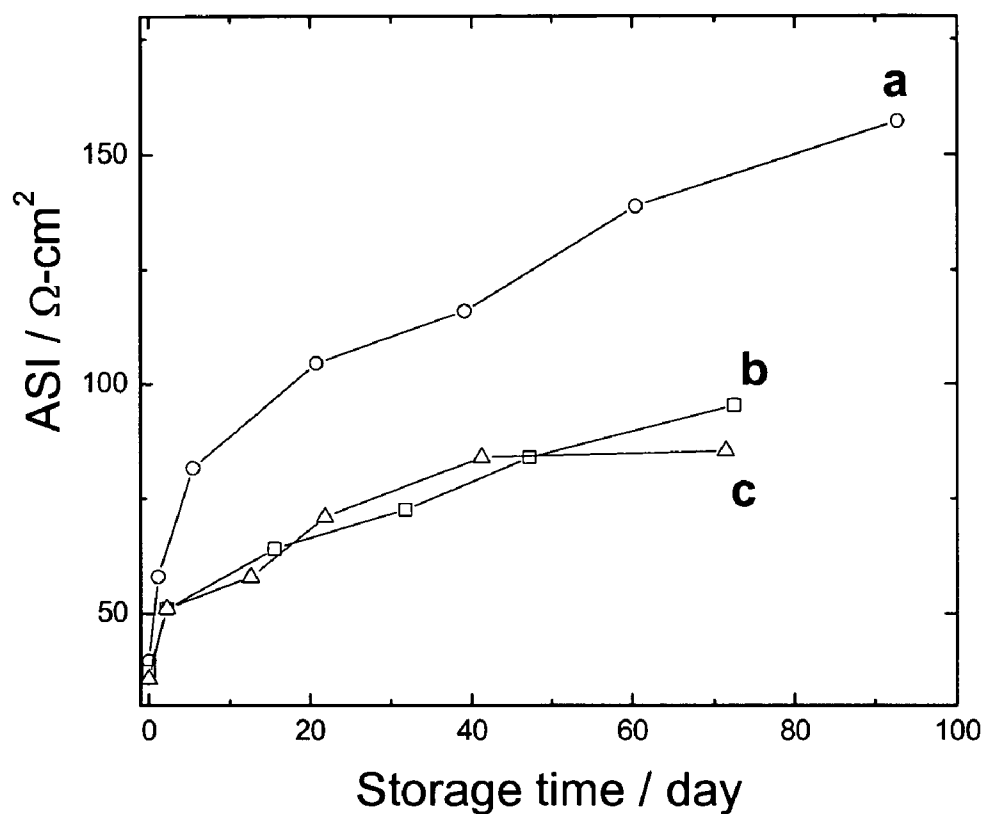


Figure 13. Variation of area specific impedance at 60% SOC with 55°C-storage time measured with C/  $\text{Li}(\text{Ni}_\alpha \text{Mn}_\beta \text{Co}_\gamma)\text{O}_2$  cells.

(a)  $\alpha=0.4$ ,  $\beta=0.4$ ,  $\gamma=0.2$ , uncoated;

(b)  $\alpha=0.4$ ,  $\beta=0.4$ ,  $\gamma=0.2$ , coated with 0.5wt% Al-isopropoxide;

(c)  $\alpha=0.4$ ,  $\beta=0.4$ ,  $\gamma=0.2$ , coated with 1.0wt% Al-isopropoxide.



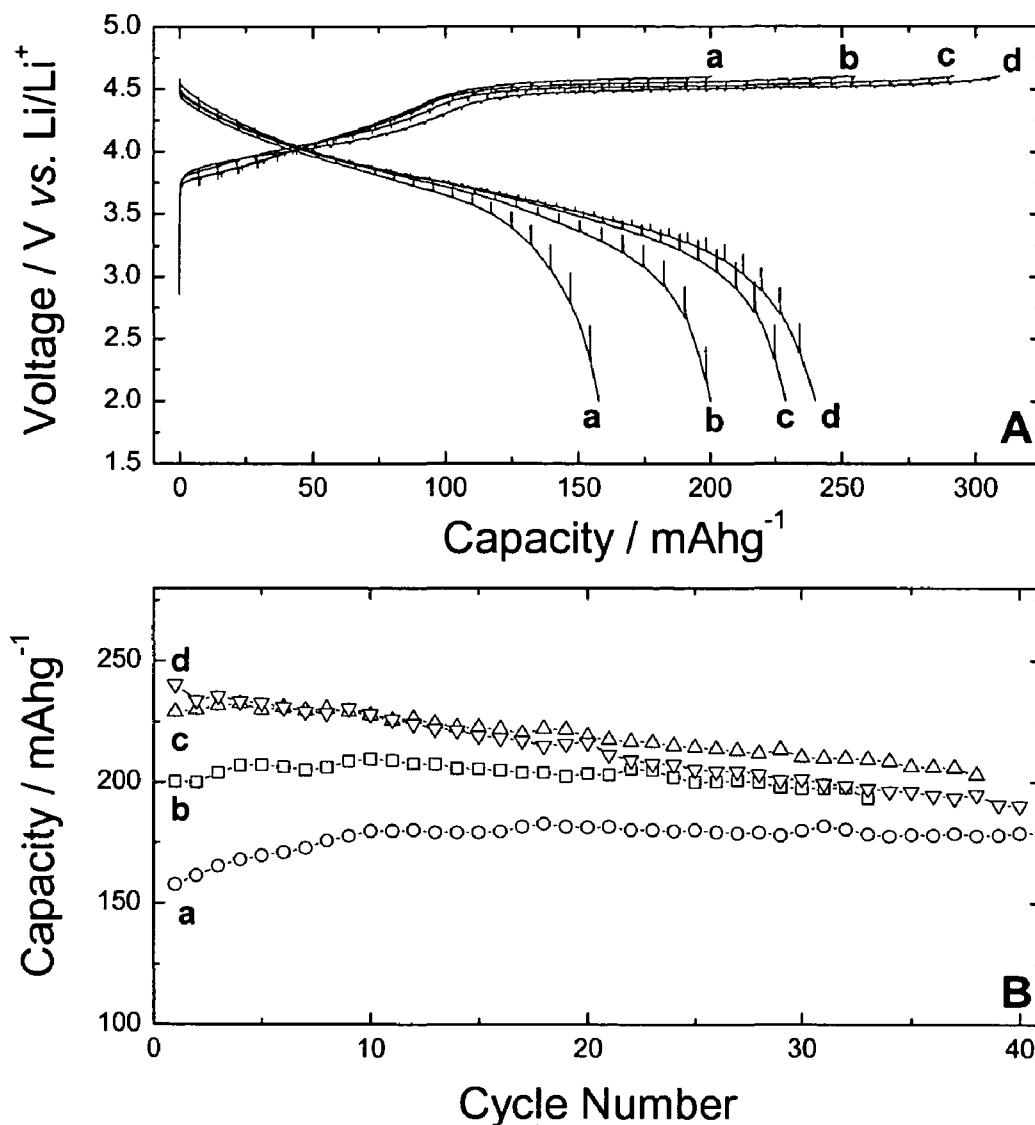


Figure 14. The first charge/discharge curves (A) and cycling performance (B) of  $\text{Li/Li}_{1+x}(\text{Ni}_{\alpha}\text{Mn}_{\beta}\text{Co}_{\gamma})\text{O}_2$  cells.

- (a)  $x=0.2, \alpha=0.2, \beta=0.6, \gamma=0$ ;
- (b)  $x=0.2, \alpha=0.195, \beta=0.595, \gamma=0.01$ ;
- (c)  $x=0.2, \alpha=0.175, \beta=0.575, \gamma=0.05$ ;
- (d)  $x=0.2, \alpha=0.15, \beta=0.55, \gamma=0.10$ .

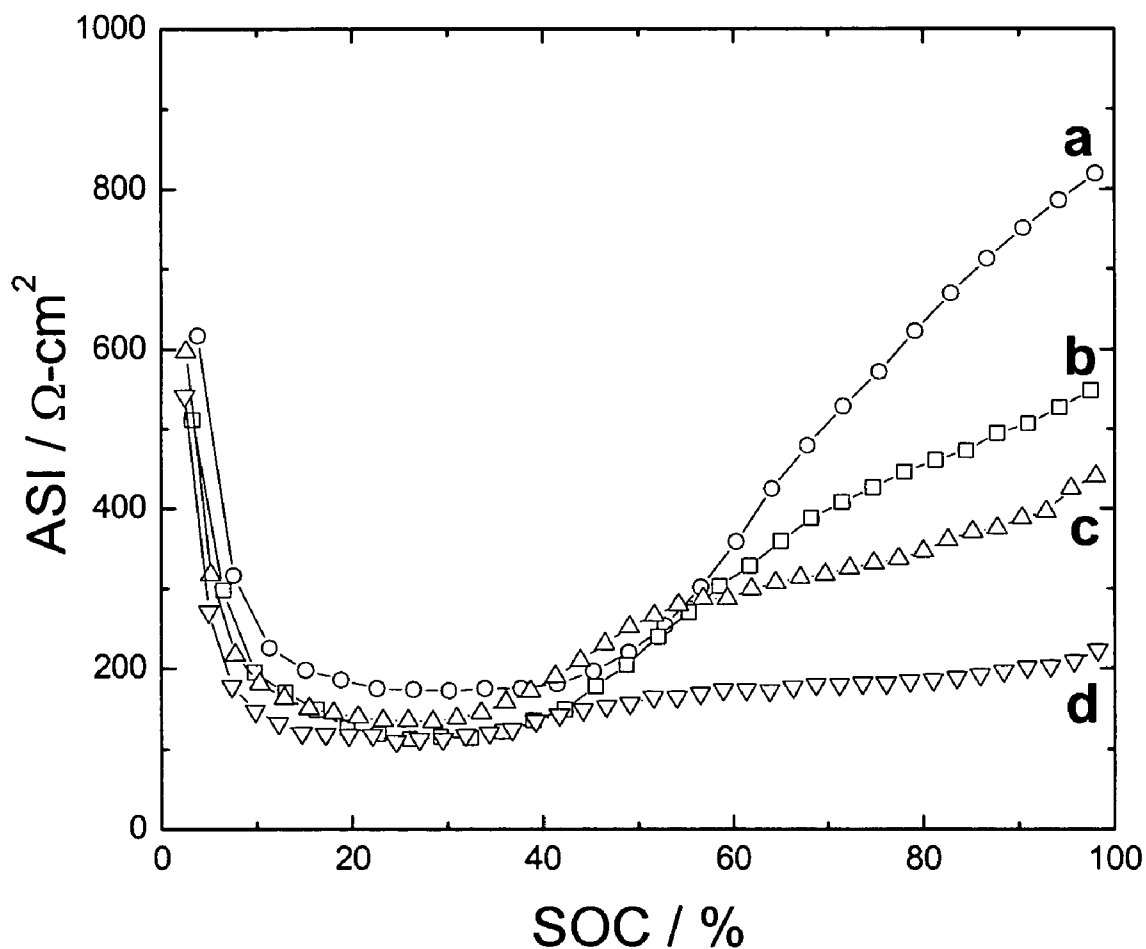


Figure 15. The area specific impedance as a function of state of charge of  $C/Li_{1+x}(Ni_{\alpha}Mn_{\beta}Co_{\gamma})O_2$  cells.

(a)  $x=0.2$ ,  $\alpha=0.2$ ,  $\beta=0.6$ ,  $\gamma=0$ ;

(b)  $x=0.2$ ,  $\alpha=0.195$ ,  $\beta=0.595$ ,  $\gamma=0.01$ ;

(c)  $x=0.2$ ,  $\alpha=0.175$ ,  $\beta=0.575$ ,  $\gamma=0.05$ ;

(d)  $x=0.2$ ,  $\alpha=0.15$ ,  $\beta=0.55$ ,  $\gamma=0.10$ .

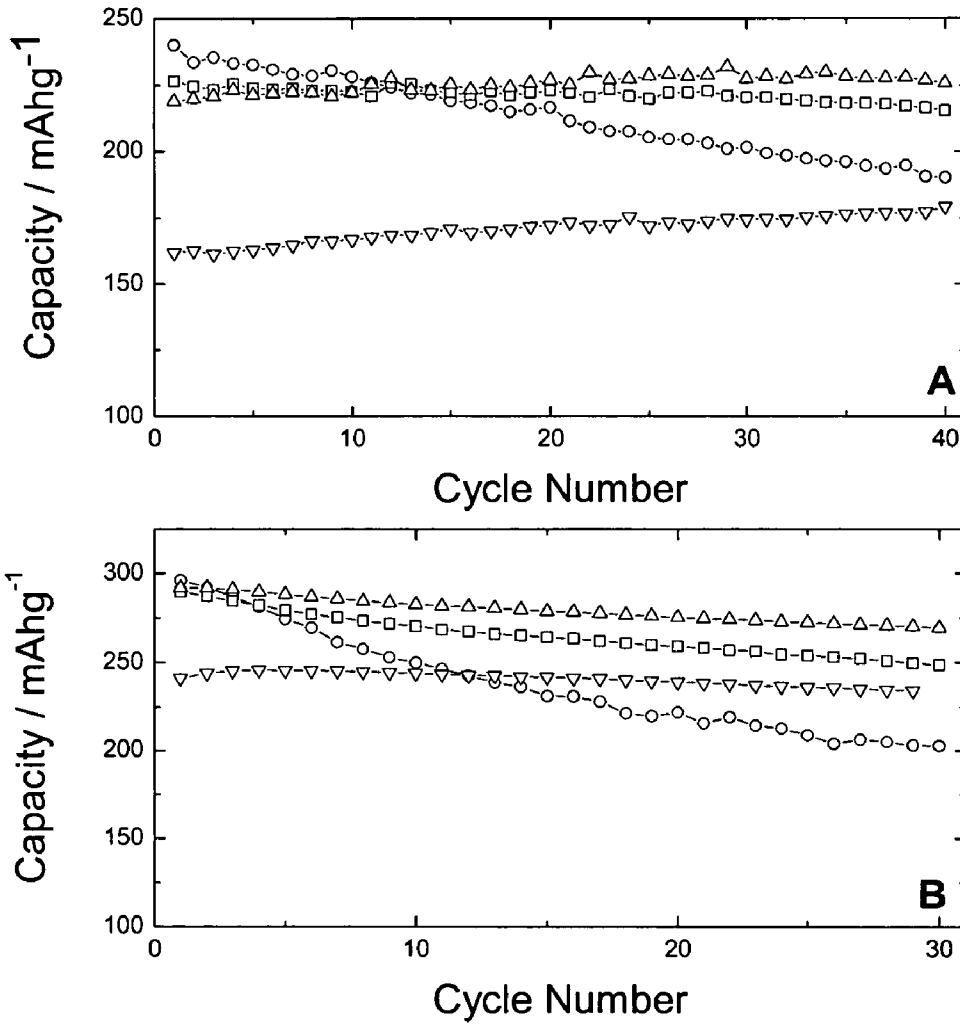


Figure 16. Cycling performance of Li/Li<sub>1+x</sub>(Ni<sub>α</sub>Mn<sub>β</sub>Co<sub>γ</sub>)O<sub>2-z</sub>F<sub>z</sub> cells at room temperature (A) and at 55°C (B).

- (a) —○— x=0.2, α=0.15, β=0.55, γ=0.1, z=0;
- (b) —□— x=0.2, α=0.16, β=0.54, γ=0.1, z=0.02;
- (c) —△— x=0.2, α=0.175, β=0.525, γ=0.1, z=0.05;
- (d) —▽— x=0.2, α=0.2, β=0.5, γ=0.1, z=0.1.

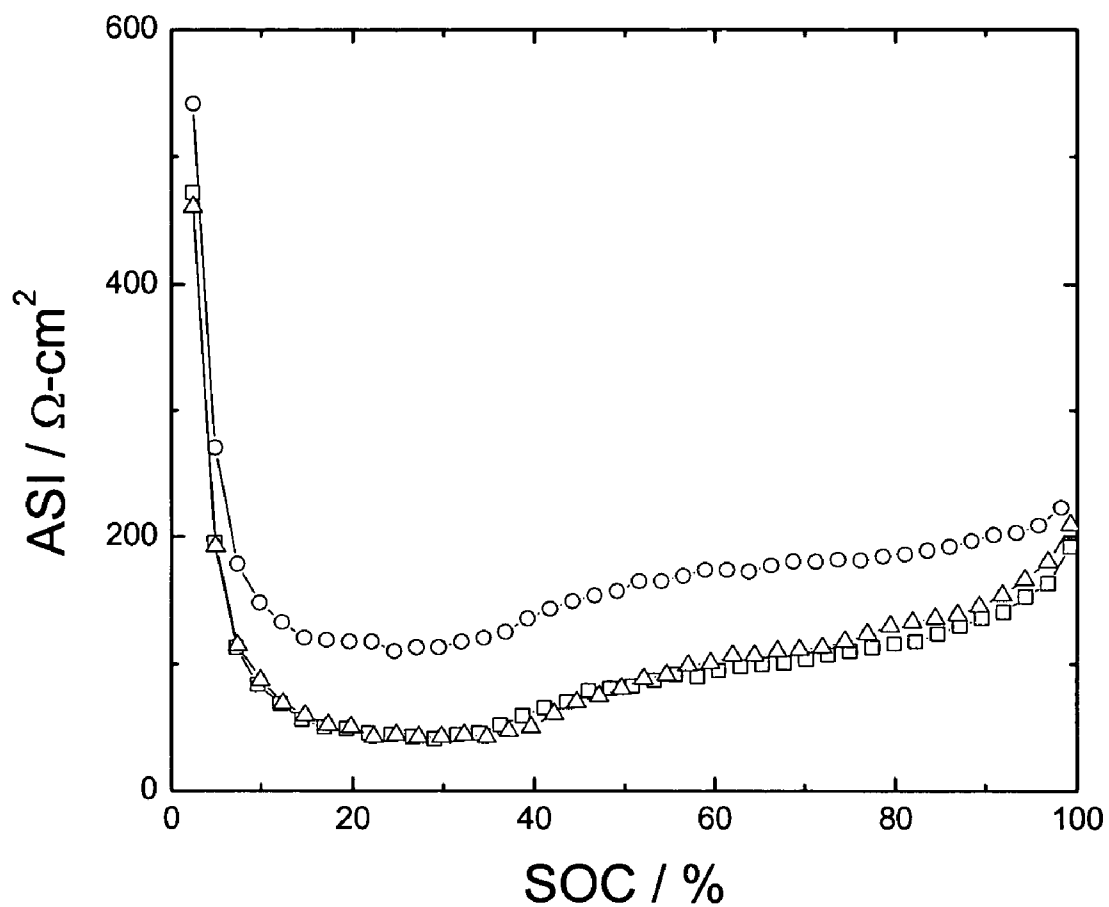


Figure 17. The area specific impedance of  $C/Li_{1+x}(Ni_{\alpha}Mn_{\beta}Co_{\gamma})O_{2-z}F_z$  cells as a function of SOC.

—○—  $x=0.2, \alpha=0.15, \beta=0.55, \gamma=0.1, z=0$ ;

—□—  $x=0.2, \alpha=0.16, \beta=0.54, \gamma=0.1, z=0.02$ ;

—△—  $x=0.2, \alpha=0.175, \beta=0.525, \gamma=0.1, z=0.05$ .

1

# LAYERED CATHODE MATERIALS FOR LITHIUM ION RECHARGEABLE BATTERIES

CROSS-REFERENCE TO RELATED PATENT APPLICATIONS

This application claims the benefit under 35 U.S.C. 119(e) U.S. Provisional Patent Application No. 60/423,347, filed Nov. 1, 2002, incorporated herein by reference in its entirety.

This invention was made with government support under Contract No. W-31-109-ENG-38 awarded to the Department of Energy. The Government has certain rights in this invention.

## BACKGROUND OF THE INVENTION

$\text{Li}(\text{Mn}_{0.5}\text{Ni}_{0.5})\text{O}_2$  is a promising cathode material for Li-ion rechargeable batteries due to its lower cost, improved thermal safety performance, and lower toxicity compared with  $\text{LiNiO}_2$  and  $\text{LiCoO}_2$ . However,  $\text{Li}(\text{Mn}_{0.5}\text{Ni}_{0.5})\text{O}_2$  exhibits rather small capacity for high-energy applications and rather high impedance for high-power applications.

A need therefore remains for an improved layered cathode material for use with lithium ion rechargeable batteries.

## SUMMARY OF THE INVENTION

It is therefore an object of the present invention to provide an improved cathode for rechargeable batteries that possesses improved impedance characteristics.

It is another object of the present invention to provide an improved cathode for rechargeable batteries that possesses improved stability of the layered oxide structure during electrochemical cycling.

It is still another object of the present invention to provide an improved cathode for rechargeable batteries that possesses improved capacity characteristics.

In accordance with the above objects, a number of materials with composition  $\text{Li}_{1+x}\text{Ni}_\alpha\text{Mn}_\beta\text{Co}_\gamma\text{M}'_\delta\text{O}_{2-z}\text{F}_z$  ( $\text{M}'=\text{Mg}, \text{Zn}, \text{Al}, \text{Ga}, \text{B}, \text{Zr}, \text{Ti}$ ) have been developed for use with rechargeable batteries, wherein  $x$  is between about 0 and 0.3,  $\alpha$  is between about 0.2 and 0.6,  $\beta$  is between about 0.2 and 0.6,  $\gamma$  is between about 0 and 0.3,  $\delta$  is between about 0 and 0.15, and  $z$  is between about 0 and 0.2. Surface-coated  $\text{Li}_{1+x}\text{Ni}_\alpha\text{Mn}_\beta\text{Co}_\gamma\text{M}'_\delta\text{O}_{2-z}\text{F}_z$  ( $\text{M}'=\text{Mg}, \text{Zn}, \text{Al}, \text{Ga}, \text{B}, \text{Zr}, \text{Ti}$ ) has also been developed, wherein  $x$  is between about 0 and 0.3,  $\alpha$  is between about 0.2 and 0.6,  $\beta$  is between about 0.2 and 0.6,  $\gamma$  is between about 0 and 0.3,  $\delta$  is between about 0 and 0.15, and  $z$  is between about 0 and 0.2. Extensive testing has been conducted to investigate the effect of adding the above metal and fluorine dopants and the surface modification on capacity, impedance, and stability of the layered oxide structure during electrochemical cycling.

## BRIEF DESCRIPTION OF THE DRAWINGS

FIGS. 1(a)–1(c) show the morphology of  $(\text{Ni}_\alpha\text{Mn}_\beta\text{Co}_\gamma)$ -carbonate prepared by a co-precipitation method using ammonium hydrogen carbonate using magnification factors of  $\times 500$ ,  $\times 2,000$ , and  $\times 12,000$ , respectively.

FIGS. 2(a)–2(c) show the morphology of  $\text{Li}_{1+x}\text{Ni}_\alpha\text{Mn}_\beta\text{Co}_\gamma\text{O}_2$  prepared by calcinations of  $(\text{Ni}_\alpha\text{Mn}_\beta\text{Co}_\gamma)$ -carbonate and lithium carbonate at  $1000^\circ\text{C}$ . for 10 h in air, using magnification factors of  $\times 1,000$ ,  $\times 2,000$ , and  $\times 12,000$ , respectively;

2

FIG. 3 and FIG. 4 are plots showing the X-ray diffraction patterns of various  $\text{Li}_{1+x}\text{Ni}_\alpha\text{Mn}_\beta\text{Co}_\gamma\text{M}'_\delta\text{O}_{2-z}\text{F}_z$  compounds;

FIG. 5 is a plot showing the first charge/discharge curves of  $\text{Li}/\text{Li}(\text{Ni}_\alpha\text{Mn}_\beta\text{Co}_\gamma)\text{O}_{2-z}\text{F}_z$  cells;

FIG. 6 is a plot showing the cycling performance of  $\text{Li}/\text{Li}(\text{Ni}_\alpha\text{Mn}_\beta\text{Co}_\gamma)\text{O}_{2-z}\text{F}_z$  cells;

FIG. 7 is a plot showing the area specific impedance of  $\text{C}/\text{Li}(\text{Ni}_\alpha\text{Mn}_\beta)\text{O}_{2-z}\text{F}_z$  cells as a function of state of charge measured by 30 s-current interruption;

FIG. 8 is a plot showing the variation of the area specific impedance values at 50% state of charge of  $\text{C}/\text{Li}(\text{Ni}_\alpha\text{Mn}_\beta)\text{O}_{2-z}\text{F}_z$  cells;

FIGS. 9 and 10 show the cycling performance of uncoated  $\text{Li}(\text{Ni}_\alpha\text{Mn}_\beta\text{Co}_\gamma)\text{O}_2$ ,  $\text{Li}(\text{Ni}_\alpha\text{Mn}_\beta\text{Co}_\gamma)\text{O}_2$  coated with 0.5 wt % Al-isopropoxide, and  $\text{Li}(\text{Ni}_\alpha\text{Mn}_\beta\text{Co}_\gamma)\text{O}_2$  coated with 1.0 wt % Al-isopropoxide at room temperature and  $55^\circ\text{C}$ ., respectively;

FIG. 11 shows the variation of area specific impedance (ASI) with cycling of  $\text{C}/\text{Li}(\text{Ni}_\alpha\text{Mn}_\beta\text{Co}_\gamma)\text{O}_2$  measured by a 30 s current interruption method;

FIG. 12 shows the a.c. impedance spectroscopy of  $\text{C}/\text{Li}(\text{Ni}_\alpha\text{Mn}_\beta\text{Co}_\gamma)\text{O}_2$  cells as a function of cycle number measured with  $\text{C}/\text{Li}(\text{Ni}_\alpha\text{Mn}_\beta\text{Co}_\gamma)\text{O}_2$  cells;

FIG. 13 presents the variation of area specific impedance at 60% SOC with a  $55^\circ\text{C}$ .-storage time measured with  $\text{C}/\text{Li}(\text{Ni}_\alpha\text{Mn}_\beta\text{Co}_\gamma)\text{O}_2$  cells;

FIG. 14 is a plot showing the first charge/discharge curves and variation of discharge capacity with cycle number of  $\text{Li}/\text{Li}_{1+x}(\text{Ni}_\alpha\text{Mn}_\beta\text{Co}_\gamma)\text{O}_2$  cells;

FIG. 15 is a plot showing the area specific impedance of  $\text{C}/\text{Li}_{1+x}(\text{Ni}_\alpha\text{Mn}_\beta\text{Co}_\gamma)\text{O}_2$  cells as a function of state of charge measured by a 30 s current interruption method;

FIG. 16 is a plot showing the cycling performance of  $\text{Li}/\text{Li}_{1+x}(\text{Ni}_\alpha\text{Mn}_\beta\text{Co}_\gamma)\text{O}_{2-z}\text{F}_z$  cells at room temperature and at  $55^\circ\text{C}$ .; and

FIG. 17 is a plot showing the area specific impedance of  $\text{Li}/\text{Li}_{1+x}(\text{Ni}_\alpha\text{Mn}_\beta\text{Co}_\gamma)\text{O}_{2-z}\text{F}_z$  cells measured by a 30 s current interruption method.

## DETAILED DESCRIPTION OF THE PREFERRED EMBODIMENTS

The present invention presents layered lithium nickel manganese oxide cathode materials for lithium secondary batteries such as: (1) cathode materials doped with fluorine on oxygen sites to reduce impedance and to improve cycling stability at high temperature as well as at room temperature; (2) cathode materials doped with various metal ions on transition metal site to stabilize layered structure, suppress cation mixing and, consequently, improve electrochemical properties; lithium, cobalt, magnesium, zinc, aluminum, gallium, boron, zirconium, and titanium ions were chosen for the latter purposes; and (3) cathode materials surface-coated to improve cycling/power performance and thermal safety, wherein the coating element of the coating material source is at least one element selected from the group consisting of Al, Bi, Ga, Ge, In, Mg, Pb, Si, Sn, Ti, Tl, Zn, Zr. Either a solid-state reaction method or an aqueous solution method or a sol-gel method may be employed for the preparation of the compounds  $\text{Li}_{1+x}\text{Ni}_\alpha\text{Mn}_\beta\text{Co}_\gamma\text{M}'_\delta\text{O}_{2-z}\text{F}_z$  with the value  $\text{M}'=\text{Mg}, \text{Zn}, \text{Al}, \text{Ga}, \text{B}, \text{Zr}, \text{Ti}$  and in another embodiment  $\text{Li}_{1+x}\text{Ni}_\alpha\text{Mn}_\beta\text{Co}_\gamma\text{M}'_\delta\text{O}_{2-z}\text{X}_z$  ( $\text{M}'=\text{Mg}, \text{Zn}, \text{Al}, \text{Ga}, \text{B}, \text{Zr}, \text{Ti}$ ;  $\text{X}=\text{F}, \text{S}, \text{Cl}, \text{I}$ ).

For the solid state reaction method,  $(\text{Ni}, \text{Mn}, \text{Co})$ -hydroxides or  $(\text{Ni}, \text{Mn}, \text{Co})$ -carbonates may be prepared by a co-precipitation method. For preparation of  $(\text{Ni}, \text{Mn}, \text{Co})$ -hydroxides, appropriate amount of  $\text{NiSO}_4$  [or  $\text{Ni}(\text{CH}_3\text{CO}$

3

$O)_2 \cdot xH_2O$  or  $Ni(NO_3)_2 \cdot xH_2O$ ],  $MnSO_4$  [or  $Mn(CH_3COO)_2 \cdot xH_2O$  or  $Mn(NO_3)_2 \cdot xH_2O$ ], and  $CoSO_4$  [or  $Co(CH_3COO)_2 \cdot xH_2O$  or  $Co(NO_3)_2 \cdot xH_2O$ ] are dissolved in distilled water, and the solution is added to another solution of ammonium hydroxide ( $NH_4OH$ ) and sodium hydroxide ( $NaOH$ ) with a  $pH=10-12$ . During the co-precipitation process, the  $pH$  of the overall solution is kept at  $10-12$  using  $NaOH$ . For preparation of  $(Ni, Mn, Co)$  carbonates, appropriate amount of  $NiSO_4$  [or  $Ni(CH_3COO)_2 \cdot xH_2O$  or  $Ni(NO_3)_2 \cdot xH_2O$ ],  $MnSO_4$  [or  $Mn(CH_3COO)_2 \cdot xH_2O$  or  $Mn(NO_3)_2 \cdot xH_2O$ ], and  $CoSO_4$  [or  $Co(CH_3COO)_2 \cdot xH_2O$  or  $Co(NO_3)_2 \cdot xH_2O$ ] are dissolved in distilled water, and the solution is added to another aqueous solution of ammonium hydrogen carbonate  $[(NH_4)_2HCO_3]$ . During the co-precipitation process, the temperature of the overall solution is kept at  $40-70^\circ C$ . The co-precipitated powders are filtered and dried. To prepare a  $Li_{1+x}Ni_\alpha Mn_\beta Co_\gamma M'_8 O_{2-z} F_z$  ( $M'=Mg, Zn, Al, Ga, B, Zr, Ti$ ) compound, appropriate amounts of lithium hydroxide (or lithium carbonate), lithium fluoride,  $(Ni, Mn, Co)$ -hydroxide [or  $(Ni, Mn, Co)$ -carbonate], and  $M'$ -hydroxides (or  $M'$ -oxides) are mixed. The mixed powders are calcined at  $450-550^\circ C$ . for 12-30 hours in air and then at  $900-1000^\circ C$ . for 10-24 hours either in air or in an oxygen-containing atmosphere.

For the aqueous solution method, appropriate amounts of lithium hydroxide, lithium fluoride, nickel hydroxide, cobalt hydroxide, and  $M'$ -hydroxide (or  $M'$ -nitrate) are dissolved in distilled water whose  $pH$  is adjusted with nitric acid. An aqueous solution of manganese acetate is added to the above solution. The mixed solution is refluxed in a round bottom flask attached with a condenser at  $80^\circ C$ . for about 12-24 hours and evaporated in a rotary vacuum evaporator. Organic contents in the gel precursor are eliminated at  $400^\circ C$ . for 2 hours. Finally, the resulting powder is calcined at  $900-1000^\circ C$ . for about 10-24 hours either in air or in an oxygen-containing atmosphere.

For the sol-gel method, appropriate amounts of lithium acetate, lithium fluoride, nickel acetate, manganese acetate, cobalt acetate, and  $M'$ -acetate are dissolved in distilled water and added to a glycolic/tartaric acid solution that is used as a chelating agent. The solution  $pH$  is adjusted to around 7 using ammonium hydroxide. The entire process is conducted under continuous stirring and heating on a hot plate. The resulting gel precursor is decomposed at  $450^\circ C$ . for 5 hours in air. The decomposed powders are then fired at about  $900-1000^\circ C$ . for about 10-24 hours either in air or in an oxygen-containing atmosphere.

For the surface-coating of the synthesized compound  $Li_{1+x}Ni_\alpha Mn_\beta Co_\gamma M'_8 O_{2-z} F_z$ , coating solutions are prepared by dissolving coating material sources in organic solvents or water. The coating material sources include  $A'$ -alkoxide,  $A'$ -salt or  $A'$ -oxide, where  $A'$  includes  $Al, Bi, Ga, Ge, In, Mg, Pb, Si, Sn, Ti, Tl, Zn, Zr$  or mixtures thereof. The coating solutions are mixed with the synthesized compound  $Li_{1+x}Ni_\alpha Mn_\beta Co_\gamma M'_8 O_{2-z} F_z$  by an impregnation method such as dip coating. The amount of coating material sources may be between about 0.05 and 10 weight percent of  $Li_{1+x}Ni_\alpha Mn_\beta Co_\gamma M'_8 O_{2-z} F_z$ . Thereafter, the surface-coated  $Li_{1+x}Ni_\alpha Mn_\beta Co_\gamma M'_8 O_{2-z} F_z$  powder is dried at temperatures between about  $25^\circ C$ . and  $700^\circ C$ . for approximately 1 to 24 hours.

The synthesized compound is mixed with a carbon additive and a PVDF binder to form a laminate film on an aluminum foil. This laminate is used for electrochemical testing in the presence of lithium or carbon counter electrodes and non-aqueous electrolytes made of  $LiPF_6/EC:DEC$  (1:1).

4

FIGS. 1(a)-1(c) show the morphology of  $(Ni_\alpha Mn_\beta Co_\gamma)$ -carbonate prepared by the co-precipitation method using ammonium hydrogen carbonate. Spherical shape precursors with homogeneous size distribution are obtained by the co-precipitation. The magnification factors of FIGS. 1(a), 1(b), and 1(c) are  $\times 500, \times 2,000,$  and  $\times 12,000,$  respectively.

FIGS. 2(a)-2(c) show the morphology of  $Li_{1+x}Ni_\alpha Mn_\beta Co_\gamma O_2$  prepared by calcinations of  $(Ni_\alpha Mn_\beta Co_\gamma)$ -carbonate and lithium carbonate at  $1000^\circ C$ . for 10 h in air. The spherical shape of the precursor is preserved after calcinations. The magnification factors of FIGS. 2(a), 2(b) and 2(c) are  $\times 1,000, \times 2,000,$  and  $\times 12,000,$  respectively.

FIGS. 3 and 4 represent X-ray diffraction patterns of  $Li_{1+x}Ni_\alpha Mn_\beta Co_\gamma M'_8 O_{2-z} F_z$  compounds. All of the compounds exhibit the ordered rock-salt structure with crystallographic structure of  $R\bar{3}m$ . For the  $Li$ -excess composition such as  $Li(Li_{0.2}Ni_{0.2+0.5z}Co_{0.1}Mn_{0.5-0.5z})O_{2-z}F_z$ , extra peaks appear at  $20-25^\circ$ , as shown in FIG. 4, which are generally attributed to cation ordering in the transition metal layer.

FIG. 5 shows the first charge/discharge curves of  $Li/Li(Ni_\alpha Mn_\beta Co_\gamma)O_{2-z}F_z$  cells, and FIG. 6 shows cycling performance of  $Li/Li(Ni_\alpha Mn_\beta Co_\gamma)O_{2-z}F_z$  cells. FIGS. 5 and 6 clearly show that the discharge capacity increases by more than 10%, and the cycling performance improves by the simultaneous substitution of cations and anions.

FIG. 7 shows area specific impedance (ASI) of  $C/Li(Ni_\alpha Mn_\beta)O_{2-z}F_z$  cells as a function of state of charge (SOC) measured by 30 s-current interruption. FIG. 8 shows the variation of the ASI values at 50% SOC of  $C/Li(Ni_\alpha Mn_\beta)O_{2-z}F_z$  cells. FIGS. 7 and 8 clearly show that fluorine doping lowers impedance and enhances cycling stability.

FIGS. 9 and 10 show the cycling performance of uncoated  $Li(Ni_\alpha Mn_\beta Co_\gamma)O_2$ ,  $Li(Ni_\alpha Mn_\beta Co_\gamma)O_2$  coated with 0.5 wt %  $Al$ -isopropoxide, and  $Li(Ni_\alpha Mn_\beta Co_\gamma)O_2$  coated with 1.0 wt %  $Al$ -isopropoxide at room temperature and  $55^\circ C$ ., respectively. The coating solution is prepared by dissolving appropriate amount of  $Al$ -isopropoxide in ethanol.  $Li(Ni_\alpha Mn_\beta Co_\gamma)O_2$  powders are then mixed thoroughly with the coating solution and dried at  $100^\circ C$ . for 12 h. The coated powders are subsequently heat-treated at  $300^\circ C$ . for 3 h in air. For FIG. 9, the data identified under group (a),  $\alpha=0.4, \beta=0.4, \gamma=0.2$ , with the  $Li(Ni_\alpha Mn_\beta Co_\gamma)O_2$  uncoated. For the data identified under group (b),  $\alpha=0.4, \beta=0.4, \gamma=0.2$ , and the  $Li(Ni_\alpha Mn_\beta Co_\gamma)O_2$  is coated with 0.5 wt %  $Al$ -isopropoxide. For the data identified under group (c),  $\alpha=0.4, \beta=0.4, \gamma=0.2$ , and the  $Li(Ni_\alpha Mn_\beta Co_\gamma)O_2$  is coated with 1.0 wt %  $Al$ -isopropoxide. In FIG. 10, for the data identified under group (a),  $\alpha=0.4, \beta=0.4, \gamma=0.2$ , with the  $Li(Ni_\alpha Mn_\beta Co_\gamma)O_2$  uncoated. For the data identified under group (b),  $\alpha=0.4, \beta=0.4, \gamma=0.2$ , and the  $Li(Ni_\alpha Mn_\beta Co_\gamma)O_2$  is coated with 0.5 wt %  $Al$ -isopropoxide.

FIG. 11 shows the variation of area specific impedance (ASI) with cycling of  $C/Li(Ni_\alpha Mn_\beta Co_\gamma)O_2$  measured by a 30 s current interruption method with  $C/Li(Ni_\alpha Mn_\beta Co_\gamma)O_2$  cells. The cells with coated cathode materials exhibit a very limited increase of ASI, whereas the cells with uncoated cathode material show a large impedance increase with cycling.

FIG. 12 shows the a.c. impedance spectroscopy of  $C/Li(Ni_\alpha Mn_\beta Co_\gamma)O_2$  cells as a function of cycle number measured with  $C/Li(Ni_\alpha Mn_\beta Co_\gamma)O_2$  cells. This representation indicates the surface coating significantly improves the stability of the cathode surface/electrolyte interface. In FIGS. 11 and 12, for the data identified under chart (a),  $\alpha=0.4, \beta=0.4, \gamma=0.2$ , with the  $Li(Ni_\alpha Mn_\beta Co_\gamma)O_2$  uncoated. For the data identified under chart (b),  $\alpha=0.4, \beta=0.4, \gamma=0.2$ , and the  $Li(Ni_\alpha Mn_\beta Co_\gamma)O_2$  is coated with 0.5 wt %  $Al$ -

isopropoxide. For the data identified under chart (c),  $\alpha=0.4$ ,  $\beta=0.4$ ,  $\gamma=0.2$ , and the  $\text{Li}(\text{Ni}_\alpha\text{Mn}_\beta\text{Co}_\gamma)\text{O}_2$  is coated with 1.0 wt % Al-isopropoxide.

FIG. 13 presents the impedance variation with a 55° C.-storage time measured with  $\text{C}/\text{Li}(\text{Ni}_\alpha\text{Mn}_\beta\text{Co}_\gamma)\text{O}_2$  cells. For the data identified under group (a),  $\alpha=0.4$ ,  $\beta=0.4$ ,  $\gamma=0.2$ , with the  $\text{Li}(\text{Ni}_\alpha\text{Mn}_\beta\text{Co}_\gamma)\text{O}_2$  uncoated. For the data identified under group (b), ( $\alpha=0.4$ ,  $\beta=0.4$ ,  $\gamma=0.2$ , and the  $\text{Li}(\text{Ni}_\alpha\text{Mn}_\beta\text{Co}_\gamma)\text{O}_2$  is coated with 0.5 wt % Al-isopropoxide. For the data identified under group (c),  $\alpha=0.4$ ,  $\beta=0.4$ ,  $\gamma=0.2$ , and the  $\text{Li}(\text{Ni}_\alpha\text{Mn}_\beta\text{Co}_\gamma)\text{O}_2$  is coated with 1.0 wt % Al-isopropoxide. FIGS. 9–13 clearly show the surface coating greatly improving the cycle life, as well as calendar life, of the lithium-ion cells.

FIG. 14 shows the first charge/discharge curves and variation of discharge capacity with cycle number of  $\text{Li}/\text{Li}_{1+x}(\text{Ni}_\alpha\text{Mn}_\beta\text{Co}_\gamma)\text{O}_2$  cells. FIG. 15 shows the area specific impedance of  $\text{C}/\text{Li}_{1+x}(\text{Ni}_\alpha\text{Mn}_\beta\text{Co}_\gamma)\text{O}_2$  cells as a function of state of charge measured by a 30 s current interruption method.

FIG. 16 shows cycling performance of  $\text{Li}/\text{Li}_{1+x}(\text{Ni}_\alpha\text{Mn}_\beta\text{Co}_\gamma)\text{O}_{2-z}\text{F}_z$  cells at room temperature and at 55° C. FIG. 17 shows the area specific impedance of  $\text{Li}/\text{Li}_{1+x}(\text{Ni}_\alpha\text{Mn}_\beta\text{Co}_\gamma)\text{O}_{2-z}\text{F}_z$  cells measured by a 30 s current interruption method.

FIGS. 14–17 clearly show that substitution of oxygen with fluorine significantly improves cycling performance and lowers the impedance of the cathode materials.

The materials described herein can be used as cathodes in lithium-ion rechargeable batteries for products such as electric vehicles, hybrid electric vehicles, portable electronics, and a variety of other products. The materials described herein are less expensive and thermally safer than existing cathode materials such as  $\text{LiCoO}_2$  and  $\text{LiNiO}_2$ . The materials of the present invention also exhibit improved calendar/cycle life when compared to existing cathode materials.

It should be understood that the above description of the invention and specific examples and embodiments, while indicating the preferred embodiments of the present invention are given by demonstration and not limitation. Many changes and modifications within the scope of the present invention may therefore be made without departing from the spirit thereof and the present invention includes all such changes and modifications.

What is claimed is:

1. A positive electrode material of substituted lithium nickel-manganese oxides for a non-aqueous lithium cell, comprising a composition of  $\text{Li}_{1+x}\text{Ni}_\alpha\text{Mn}_\beta\text{Co}_\gamma\text{M}'_8\text{O}_{2-z}\text{X}_z$  wherein  $\text{M}'$  is selected from the group consisting essentially of Mg, Zn, Al, Ga, B, Zr, and Ti, wherein X is selected from the group consisting essentially of F, Cl and I, wherein x is between a value greater than 0 and about 0.333,  $\alpha$  is between about 0.2 and 0.6,  $\beta$  is between about 0.2 and 0.667,  $\gamma$  is between a value greater than 0 and about 0.333,  $\delta$  is between a value greater than 0 and about 0.2, and z is between a value greater than 0 and about 0.5.

2. The positive electrode material of claim 1, wherein the composition comprises  $\text{Li}_{1+x}\text{Ni}_\alpha\text{Mn}_\beta\text{O}_{2-z}\text{F}_z$ , and wherein x is between about a value greater than and about 0.333,  $\alpha$  is between about 0.2 and 0.6,  $\beta$  is between about 0.2 and 0.667, and z is between about a value greater than 0 and about 0.5.

3. The positive electrode material, of claim 1, wherein the composition comprises  $\text{Li}_{1+x}\text{Ni}_\alpha\text{Mn}_\beta\text{Co}_\gamma\text{O}_{2-z}\text{F}_z$ , and wherein x is between about a value greater than 0 and about 0.333,  $\alpha$  is between about 0.2 and 0.6,  $\beta$  is between about 0.2 and 0.667,  $\gamma$  is between about 0.01 and 0.333, and z is between about a value greater than 0 and 0.5.

4. The positive electrode material, of claim 1, wherein the composition comprises  $\text{Li}_{1+x}\text{Ni}_\alpha\text{Mn}_\beta\text{Al}_\delta\text{O}_{2-z}\text{F}_z$ , and wherein x is between about a value greater than 0 and about 0.333,  $\alpha$  is between about 0.2 and 0.6,  $\beta$  is between about 0.2 and 0.667,  $\delta$  is between about 0.01 and 0.2, and z is between about a value greater than 0 and about 0.5.

5. The positive electrode material of claim 1, wherein the composition comprises  $\text{Li}_{1-x}\text{Ni}_\alpha\text{Mn}_\beta\text{Ti}_\delta\text{O}_{2-z}\text{F}_z$ , wherein x is between about a value greater than 0 and about 0.333,  $\alpha$  is between about 0.2 and 0.6,  $\beta$  is between about 0.2 and 0.667,  $\delta$  is between about 0.01 and 0.2, and z is between about a value greater than 0 and about 0.5.

6. The positive electrode material of claim 1, wherein the composition comprises  $\text{Li}_{1+x}\text{Ni}_\alpha\text{Mn}_\beta\text{Co}_\gamma\text{Al}_\delta\text{O}_{2-z}\text{F}_z$ , and wherein x is between about a value greater than 0 and about 0.333,  $\alpha$  is between about 0.2 and 0.6,  $\beta$  is between about 0.2 and 0.667,  $\gamma$  is between about 0.01 and 0.333,  $\delta$  is between about 0.01 and 0.2, and z is between about a value greater than 0 and about 0.5.

7. The positive electrode material of claim 1, wherein the composition comprises  $\text{Li}_{1+x}\text{Ni}_\alpha\text{Mn}_\beta\text{Co}_\gamma\text{Ti}_\delta\text{O}_{2-z}\text{F}_z$ , and wherein x is between about a value greater than 0 and about 0.333,  $\alpha$  is between about 0.2 and 0.6,  $\beta$  is between about 0.2 and 0.667,  $\gamma$  is between about 0.01 and 0.333,  $\delta$  is between about 0.01 and 0.2, and z is between about a value greater than 0 and about 0.5.

8. The electrode material of claim 1, wherein the electrode material is formed by a solid state reaction process.

9. The electrode material of claim 1, wherein the electrode material is formed by an aqueous solution based process.

10. The electrode material of claim 1, wherein the electrode material is formed by a sol-gel process.

11. The electrode material of claim 9, wherein the electrode material prepared by the steps of:

dissolving appropriate amounts of lithium hydroxide, lithium fluoride, nickel hydroxide, cobalt hydroxide, and  $\text{M}'$ -hydroxide or  $\text{M}'$ -nitrate; wherein  $\text{M}'$  is selected from the group consisting essentially of Mg, Zn, Al, and Ga in distilled water whose pH was adjusted with nitric acid to form a first solution;

adding an aqueous solution of manganese acetate to the first solution to form a second solution;

refluxing the second solution in a flask attached with a condenser at about 80° C. for about 12–24 hours;

evaporating the second solution in a rotary vacuum evaporator to form a gel precursor;

eliminating organic contents from the gel precursor at about 400° C. for about 2 hours to form a powder; and

calcining the powder at about 900–1000° C. for about 10–24 hours in either an air or an oxygen containing atmosphere.

12. The electrode material of claim 10, wherein the electrode material prepared by the steps of:

dissolving appropriate amounts of lithium acetate, lithium fluoride, nickel acetate, manganese acetate, cobalt acetate, and  $\text{M}'$ -acetate or  $\text{M}'$ -nitrate; wherein  $\text{M}'$  is selected from the group consisting essentially of Mg, Zn, Al, and Ga in distilled water to form a first solution; added the first solution to a glycolic/tartaric acid solution that is used as a chelating agent to form a second solution;

adjusting the pH of the second solution to about 7 using ammonium hydroxide, resulting in a gel precursor;

decomposing the gel precursor at about 4500 C for about 5 hours in air to form a decomposed power; and

7

firing the decomposed powder at about 900–1000° C. for about 10–24 hours in an air or an oxygen containing atmosphere,

wherein the dissolving, adding, and adjusting steps occur under continuous stirring and heating.

**13.** The electrode material of claim **9**, wherein the electrode material is prepared by the steps of:

mixing appropriate amounts of lithium hydroxide (or lithium carbonate), lithium fluoride, (Ni,Mn,Co)-hydroxide [or (Ni,Mn,Co)-carbonate], M'-hydroxide (or M' oxide; wherein M' is selected from the group consisting essentially of Mg, Zn, Al, Ga, B, Zr, and Ti); calcined the mixed materials at about 450–550° C. for about 12–30 hours in air; and calcining the mixed materials at about 900–1000° C. for about 10–24 hours either in air or in an oxygen-containing atmosphere.

**14.** A non-aqueous lithium cell comprising:

a negative electrode;

a non-aqueous electrolyte; and

a positive electrode,

wherein the positive electrode has a composition of  $\text{Li}_{1+x}\text{Ni}_a\text{Mn}_b\text{Co}_c\text{M}'_d\text{O}_{2-z}\text{X}_z$  wherein M' is selected from the group consisting essentially of Mg, Zn, Al, Ga, B, Zr, and Ti, wherein X is selected from the group consisting essentially of F, Cl and I, wherein x is between a value greater than 0 and about 0.333,  $\alpha$  is between about 0.2 and 0.6, b is between about 0.2 and 0.667, c is between a value greater than 0 and about 0.333,  $\delta$  is between a value greater than 0 and about 0.2, and z is between a value greater than 0 and about 0.5, and wherein oxidation states of Ni, Mn, and Co are  $\text{Ni}^{2+}$ ,  $\text{Mn}^{4+}$ , and  $\text{Co}^{3+}$ , respectively.

**15.** A positive electrode material made of substituted lithium nickel-manganese oxides for non-aqueous lithium cell, comprising:

a composition of  $\text{Li}_{1+x}\text{Ni}_a\text{Mn}_b\text{Co}_c\text{M}'_d\text{O}_{2-z}\text{X}_z$ , wherein M' is selected from the group consisting essentially of Mg, Zn, Al, Ga, B, Zr and Ti wherein X is selected from the group consisting essentially of F, Cl and I, wherein x,  $\alpha$ ,  $\beta$ , c,  $\delta$ , and z are a value greater than 0 and are controlled so as to fix the oxidation states of Ni, Mn, and Co as  $\text{Ni}^{2+}$ ,  $\text{Mn}^{4+}$ , and  $\text{Co}^{3+}$ , respectively.

8

**16.** A positive active material for a secondary lithium cell, comprising:

a core comprising at least one composition of  $\text{Li}_{1+x}\text{Ni}_a\text{Mn}_b\text{Co}_c\text{M}'_d\text{O}_{2-z}\text{X}_z$  wherein M' is selected from the group consisting essentially of Mg, Zn, Al, Ga, B, Zr, and Ti, wherein X is selected from the group consisting essentially of F, Cl and I, wherein x is between a value greater than 0 and about 0.333,  $\alpha$  is between about 0.2 and 0.6,  $\beta$  is between about 0.2 and 0.667,  $\gamma$  is between a value greater than 0 and about 0.333,  $\delta$  is between a value greater than 0 and about 0.2, and z is between a value greater than 0 and about 0.5; and

either a surface layer or a surface phase on the core, comprising at least one surface coating material from a coating material source selected from the group consisting of alkoxides, hydroxides, oxides and mixtures thereof,

wherein the surface-coated compound is heat-treated to form hydroxides or amorphous oxides on the compound surface.

**17.** The positive active material of claim **16**, wherein the amount of the surface coating material source is between about 0.05 and 10 percent by weight based upon the weight of the positive active material.

**18.** The positive active material of claim **16**, wherein the coating element of the surface coating material source comprises at least one element selected from the group consisting of Al, Bi, Ga, Ge, In, Mg, Pb, Si, Sn, Ti, Tl, Zn, Zr.

**19.** The positive active material of claim **18**, wherein the surface coating material source comprises Al-isopropoxide, zinc methoxide or indium-isopropoxide and is dissolved in ethanol.

**20.** The positive active material of claim **16**, wherein the heat-treating process is carried out at a temperature ranging from about 100 to 500° C. for a duration ranging from about 1 to 24 hours.

\* \* \* \* \*



UNITED STATES PATENT AND TRADEMARK OFFICE  
**CERTIFICATE OF CORRECTION**

PATENT NO. : 7,205,072 B2  
APPLICATION NO. : 10/699484  
DATED : April 17, 2007  
INVENTOR(S) : Sun-Ho Kang and Khalil Amine

Page 1 of 1

It is certified that error appears in the above-identified patent and that said Letters Patent is hereby corrected as shown below:

**IN THE CLAIMS:**

**Column 5, Line 59:** Delete “than and” and replace it with --than 0 and--.


**Column 6, Line 8:** Delete “Li<sub>1-x</sub>” and replace it with --Li<sub>1+x</sub>--.

**Column 6, Line 67:** Delete “power” and replace it with --powder--.

**Column 7, Line 10:** Delete “(or)” and replace it with --or--.

Signed and Sealed this

Twenty-sixth Day of June, 2007

A handwritten signature in black ink on a light gray dotted background. The signature reads "Jon W. Dudas" in a cursive style.

JON W. DUDAS

*Director of the United States Patent and Trademark Office*

UNITED STATES PATENT AND TRADEMARK OFFICE  
**CERTIFICATE OF CORRECTION**

PATENT NO. : 7,205,072 B2  
APPLICATION NO. : 10/699484  
DATED : April 17, 2007  
INVENTOR(S) : Sun-Ho Kang and Khalil Amine

Page 1 of 1

It is certified that error appears in the above-identified patent and that said Letters Patent is hereby corrected as shown below:

IN THE CLAIMS:

Column 6, line 66 please delete "4500C" and replace it with --450°C--.

Column 7, line 26 please delete "α" and replace it with --a--.

Signed and Sealed this

Twenty-second Day of July, 2008

A handwritten signature in black ink that reads "Jon W. Dudas". The signature is written in a cursive style with a large, looped initial "J".

JON W. DUDAS  
*Director of the United States Patent and Trademark Office*

UNITED STATES PATENT AND TRADEMARK OFFICE  
**CERTIFICATE OF CORRECTION**

PATENT NO. : 7,205,072 B2  
APPLICATION NO. : 10/699484  
DATED : April 17, 2007  
INVENTOR(S) : Kang et al.

Page 1 of 1

It is certified that error appears in the above-identified patent and that said Letters Patent is hereby corrected as shown below:

Column 6, line 66 please delete "4500C" and replace it with --450°C--.

Column 7, line 26 please delete "α" and replace it with --a--.

Signed and Sealed this

Twelfth Day of August, 2008

A handwritten signature in black ink that reads "Jon W. Dudas". The signature is written in a cursive style with a large, looping initial "J".

JON W. DUDAS  
*Director of the United States Patent and Trademark Office*